

CUINA



calma.

cuina

DESIGN: RUN STUDIO



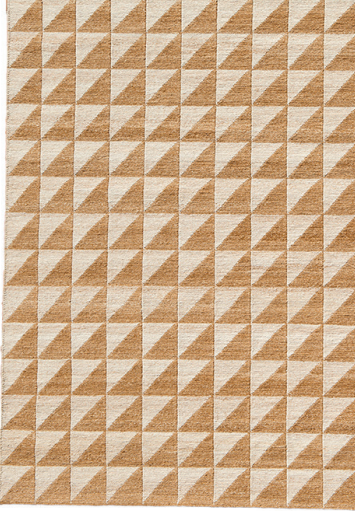
The Design:

The kitchen rugs appropriate the elements of the traditional Empordà kitchen tiles, square and glazed with two triangles of different colors that are arranged in different orientations and patterns, creating textures of varied geometries that we reproduce on the carpets.

DESIGN:
RUN STUDIO



CUINA REF. 194.RM240



CUINA REF. 194.RU345



W



D

| | | |
|-----------|--------------|-----|
| SIZE | REF. 194 | |
| WIDTH | 240 CM | 94" |
| HEIGHT | 165 CM | 65" |
| N.W. | 8,78 KG | |
| UN/BOX: | 1/1 | |
| BOX SIZE: | 175X20X20 CM | |
| VOL: | 0,070 M3 | |
| G.W.: | 9,05 KG | |

D



W

| | | |
|-----------|--------------|------|
| SIZE | REF. 194 | |
| WIDTH | 345 CM | 136" |
| HEIGHT | 75 CM | 30" |
| N.W. | 5,73 KG | |
| UN/BOX: | 1/1 | |
| BOX SIZE: | 175X35X35 CM | |
| VOL: | 0,098 M3 | |
| G.W.: | 6 KG | |

POLYPROPYLENE 100% RECYCLE



NATURAL



SILVER



MEDITERRANEAN
OUTDOOR FURNITURE
ALT EMPORDÀ, GIRONA

AVDA. EUROPA 22
POLÍGON INDUSTRIAL
EMPORDÀ INTERNACIONAL
17469 VILAMALLA-SPAIN

CONTACT
T.+34 972 52 70 89
INFO@CALMA.CAT
CALMAOUTDOOR.COM

INSTAGRAM:
@CALMAOUTDOOR
#LIFEWITHCALMA



calma.

