



SLIDING DOOR HARDWARE
FOR COMMERCIAL PROJECTS

Editorial

For over a century, the Manton group has been developing its **business designing, making and selling sliding fittings** for the building trade. Recognized today as one of the global leaders in our market, we always strive to anticipate and provide reliable and easy-to-use solutions for customer's home and work environments.

In that same spirit and driven by the love of a well-designed product built to last, in the last few years we have been investing in automatic controls for doors and windows, in a direct progression from our original products. Considering this a strategic area of development, **we chose to develop and manufacture our own automatic control products** in our subsidiary Manton SMT based in Genlis in the Côte d'Or region of France. After pioneering the use of automatic controls for sliding shutters and then

becoming the benchmark on the market for automatic controls for swing shutters, we are now able to bring you the most reliable, easy-to-use automatic control for sliding doors available on the market.

The benefits of working with Manton:

- Manton R&D department works with our clients to customize and adapt our products regarding their needs.
- A worldwide presence with local stock and technical support
- A know-how in dealing with projects
- A quality allowing us to offer a 25-year guarantee

Your customised projects in 5 steps

1 Flexibility and responsiveness.

Our techniques and skills are at the service of your specific projects.

2 Commercial exchange

Leveraging its presence in more than 80 countries over 5 continents, Manton promotes the 'Made In France' label as the hallmark of quality.

4 Mock-up

We are also present and provide support for the creation of mockups to ensure the correct use of our products.

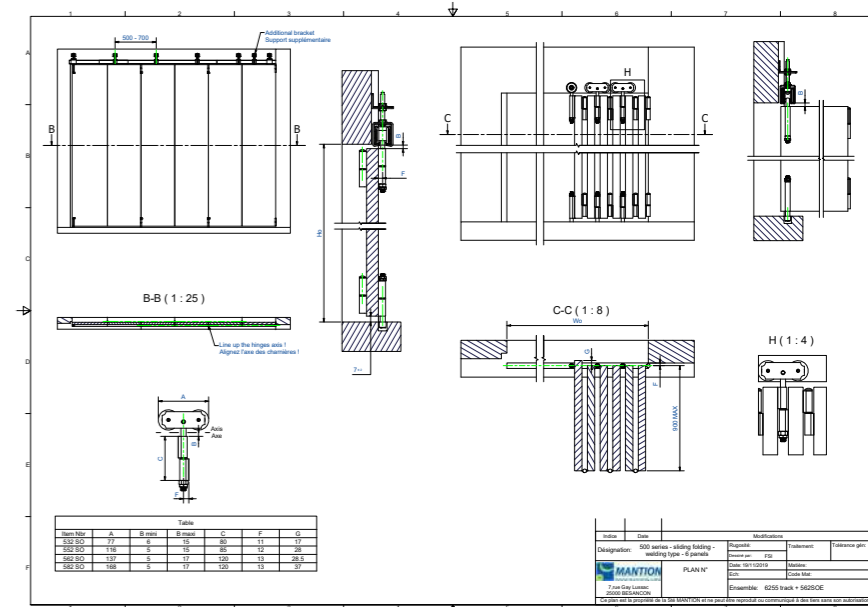


1 Non-standard customer request

Seamless Collaboration and Execution
Our teams are dedicated to client-centric solutions based on our cutting edge innovation.
We ask the right questions, we listen to your needs and expectations, we become a key collaborator with your team, and we manufacture the finest sliding systems in the world.

3 Technical exchange

Our design office offers you a technical solution adapted to your needs. We provide a detailed layout plan and a precise costing.



Customised Sliding Folding

5 Delivery and monitoring

Site monitoring is part of our service



The history

From 1920 to today - we have come a long way!

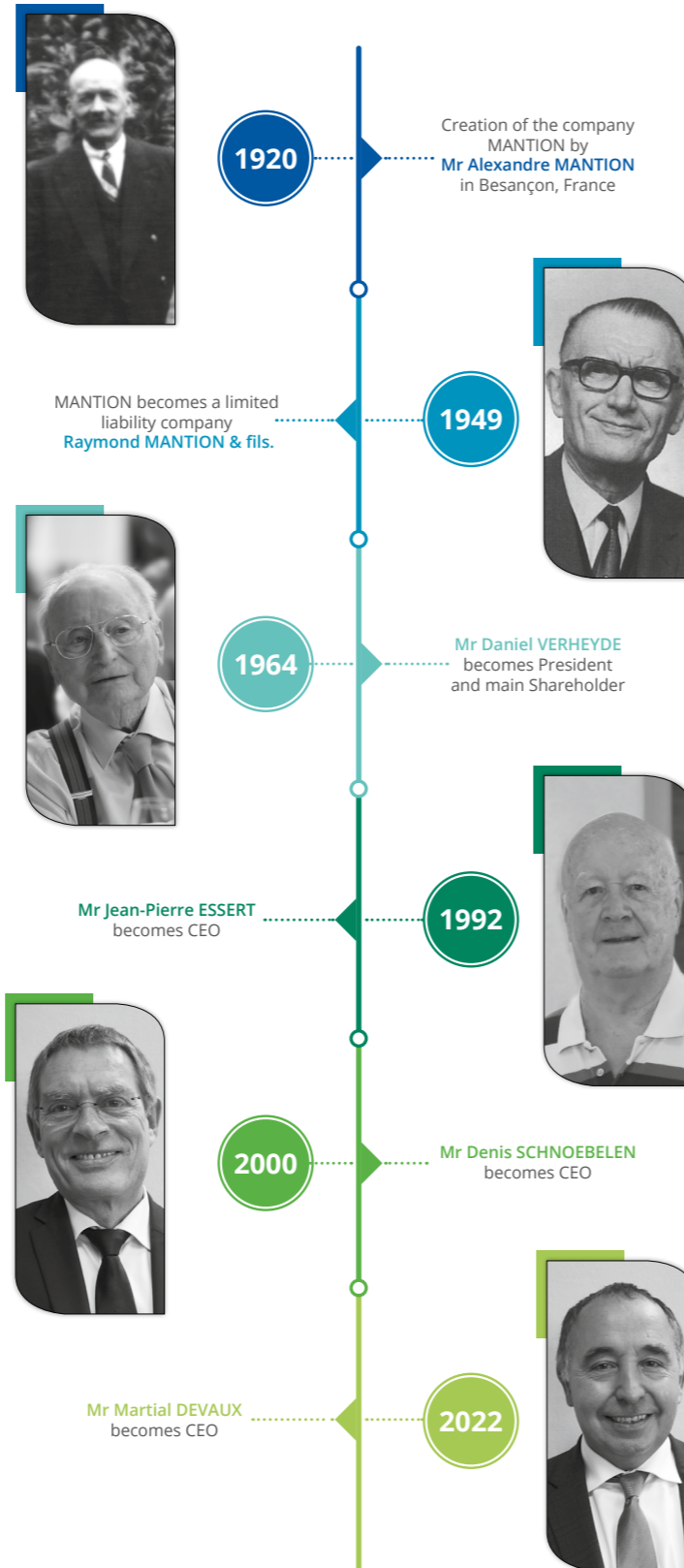
From local workshop to state-of-the-art plant.

It is hard to imagine that it all began with a small wrought-iron workshop, which, for decades, supplied numerous customers from the region with gates, guardrails, shutters and doors. At that time, Manton already stood for quality.

With orders pouring in from all over France, in 1964, the company built its main manufacturing plant at Rue Gay Lussac in Besançon, where it still stands today. In 2011, after years of development and expansion, Manton decided to streamline its plant in Besançon. The site was completely overhauled and transformed between 2011 and 2014, without reducing service capacity or interrupting any production lines.

The bet paid off!

Although a rather complex operation, it opened the door to further growth for Manton. The plant gained 4,500 m² in manufacturing space and doubled its warehouse capacity to 10,000 pallets. The streamlining of the plant in Besançon has optimised production processes and boosted competitiveness.



Our commitments



Quality: firmly anchored in Manton's DNA

Demanding and rigorous, the Manton group implements an exemplary quality policy, which involves all the company's teams.

As well as being certified to ISO 9001:2015 for several years now, Manton's concern about its environmental impact has also led it to obtain ISO 14001:2015 certification.

In addition to quality certification, Manton is committed to meeting the highest product standards, such as EN 1527, PR NF P26-341 and NF EN 12045. Our commitment goes beyond applying the standards, as we actively participate in work on standards in the countries in which the group is based (France, Germany and Poland), and at a European level, with the European Committee for Standardisation.

Manton has its very own control laboratories to guarantee the quality of its products. All systems are tested against the highest standards.

By investing in a Manton sliding system, customers are guaranteed to own the most reliable and durable system on the market.

Manton expresses its commitment to quality by offering its customers 5, 10 or 25-year warranties on products sold to professionals.



Sustainable development approach:

MANTION cares about people and the environment. We therefore are naturally committed to sustainable development, by seriously contributing to the effort to protect the planet's natural resources and improve quality of life. For the years 2018 to 2020, MANTION's objectives have been to:

- Guarantee our customers better lead times
- Reduce data entry times
- Reduce our consumption of paper and therefore our volume of waste.

As part of this general policy drive, MANTION has drawn up annual action plans to set out continuous improvement objectives, which it is committed to achieving. MANTION has devoted significant resources to implementing and managing these policies. The policies are led and coordinated by the Quality and Environment Director who reports directly to MANTION's senior management. Finally, MANTION actively raises employee and partner awareness to strengthen the effectiveness of these policies.



Editorial	p 02
History	p 02
Customised projects	p 03
Our commitments	p 04
Sustainable development	p 04
Reference list	p 22

HIGHER EDUCATION

TANGO	p 06
ROC® DESIGN	p 07

HOSPITALITY

SAF® POCKET	p 08
SAF®	p 09
SAF®TWIN	p 10
MOVENTIV®	p 11

WORKPLACE

INTEC®	p 12
SAF® TELESCOPIC	p 14
OPENTEC®	p 15
MOVENTIV®	p 16

HEALTHCARE

SAF®FOLD	p 18
SOFTCLOSE	p 19
MOVENTIV®	p 20





2 panels



4 panels



Product sheet



TANGO

TANGO is a bifold system that delivers a smooth and seamless operation, ideal for hospitality and higher education. This system includes standard and premium hinge options. The premium hinge creates a nearly invisible gap between the panels yielding a more sophisticated appearance to your space.

+ Aestheticism : concealed hinges

ROC® DESIGN

Product sheet



The ROC® DESIGN has 6 different roller styles, all offered in matt black, based on the designs of historic sliding door fittings manufactured by Manton dating back to 1935. Nearly one hundred years later, the classic design was perfected by our designers to meet the expectations of the most demanding customers. The ROC® DESIGN system combines a unique character with the latest technical solutions.

+ Bottom guide on the wall





SAF® POCKET

Looking for a no fuss, yet sophisticated high-quality system for separating any of your spaces? The SAF® Collection offers three weights for a wide range of needs using wood or metal framed doors. This system is designed to provide a highly desirable silent user experience. Its soft close system helps ensure your door will never be half open, even if you forget to close it. The system offers many options that deliver solutions to your individual design needs.

+ Removable track



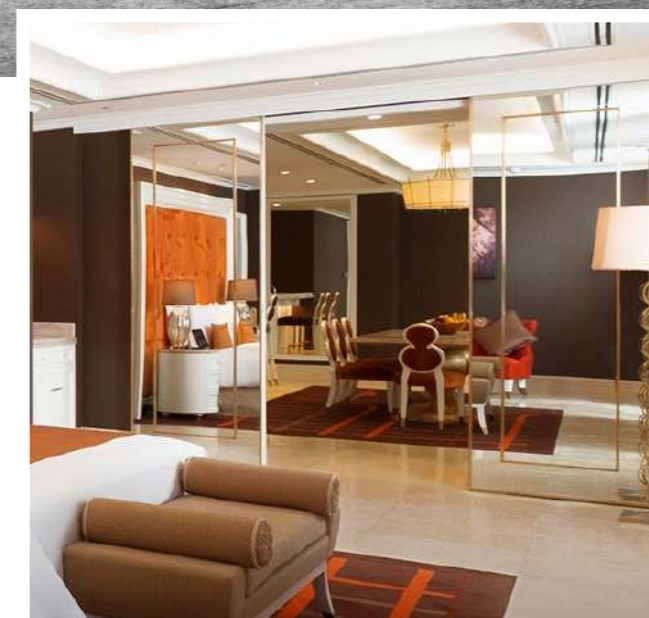
SAF®

Product sheet



Soft closer
up to 200 KG

Looking for a no fuss, yet sophisticated high-quality system for separating any of your spaces? The SAF® Collection offers three weights for a wide range of needs using wood or metal framed doors. This system is designed to provide a highly desirable silent user experience. Its soft close system helps ensure your door will never be half open, even if you forget to close it. The system offers many options that deliver solutions to your individual design needs.



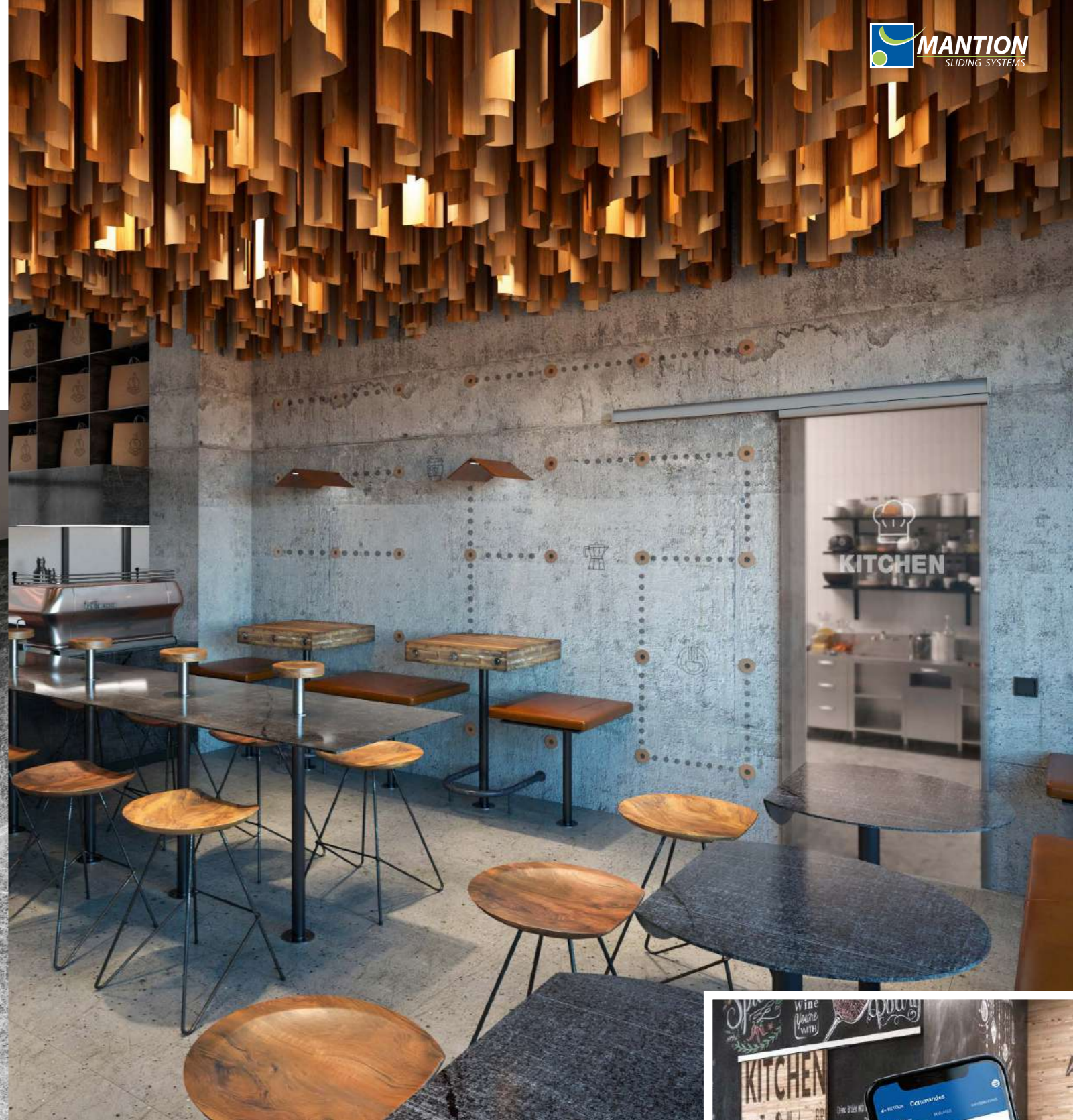
SAF® TWIN

Product sheet



SAF® TWIN is a 2 or 3 doors closet system that personalizes and delivers reliable results. Our double track system ensures the doors will function effortlessly due to the dual track part. Like many of our systems, it is silent and smooth making it perfect for any environment. This system is particularly easy to mount.

+ Weight capacity : 80kg per leaf



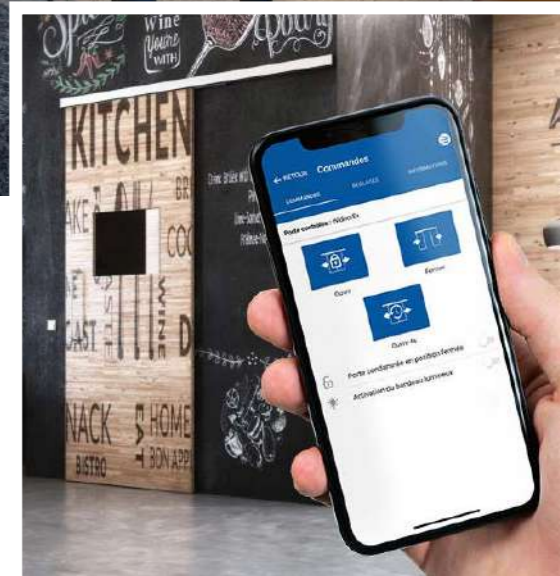
MOVENTIV®



MOVENTIV® 60 is the ideal solution for the automation of your sliding doors, wherever you want to install it. Its timeless design and compact size make the MOVENTIV® an indispensable product for your projects.

A touchless motorized hardware for sliding doors: MOVENTIV® is an innovative, ultra-quiet, high-performance technology that can be controlled remotely via a smartphone application and with a wide range of accessories.

+ Aestheticism: pelmet not bigger than a manual system





Product sheet

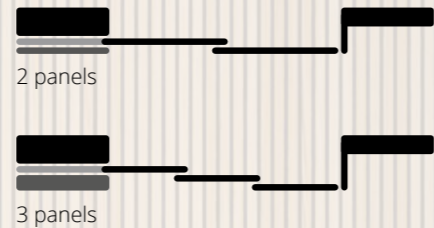
INTEC®



The beauty of glass allows for connectivity, as well as the feeling of light and transparency. Whether you choose a single sliding door or sliding door with fixed glass panels, Manton INTEC gives you the ability to provide a sleek tailored solution for your clients. INTEC is offered in 2 options, silver and mill finish aluminum and is a valued option to consider where demountable walls are being deliberated.

- + Integrated door soft-closer (closing and opening)





OPENTEC®

Product sheet



OPENTEC is a range of sliding folding systems for metal (Opentec FMF) or wooden (Opentec FW) frames and for glass partitions (Opentec F80). Configurations can reach 15 panels : 7+8

+ Different systems for interior and exterior applications



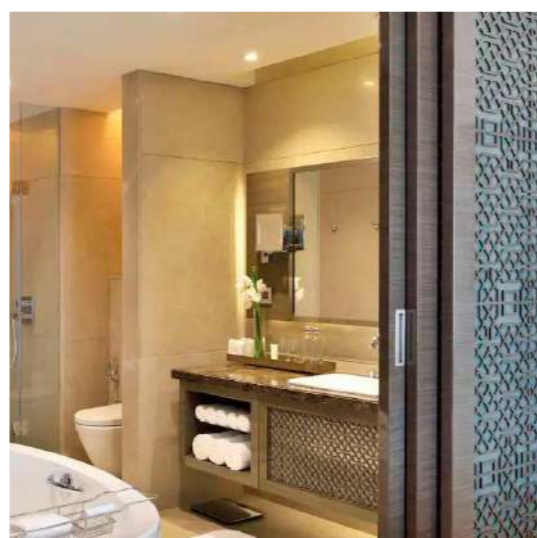
SAF® TELESCOPIC

Product sheet



Use of a sliding telescopic system around conference areas makes a wonderful design statement. Manton's SAF® TELESCOPIC synchronized system allows you to effortlessly open and close off large openings at will using our belted system. When one panel is moved, the others follow smoothly and effortlessly. This product can be adapted for larger openings and different configurations (range 2+2 through 5+5).

+ Aestheticism: no bottom track



Product sheet

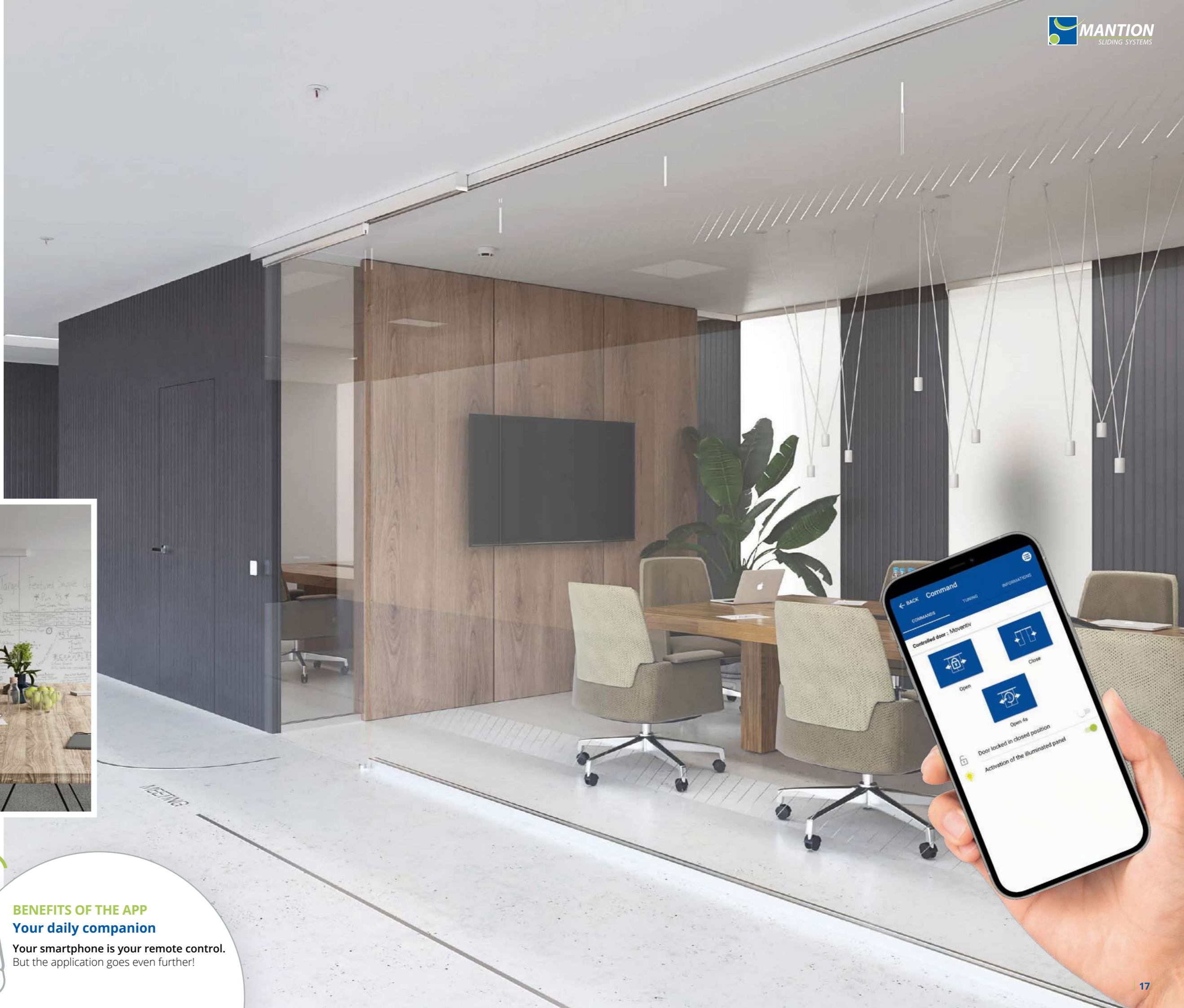
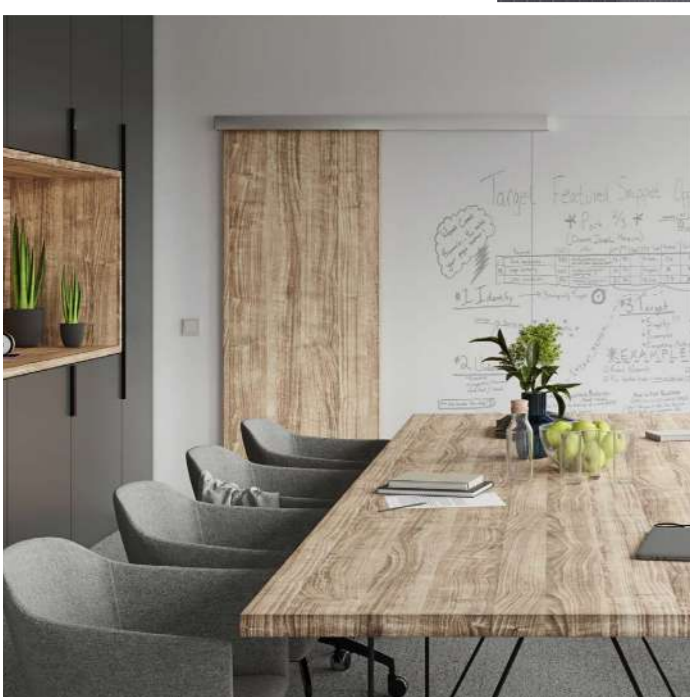


MOVENTIV®

MOVENTIV® 60 is the ideal solution for the automation of your sliding doors, wherever you want to install it. Its timeless design and compact size make the MOVENTIV® an indispensable product for your projects.

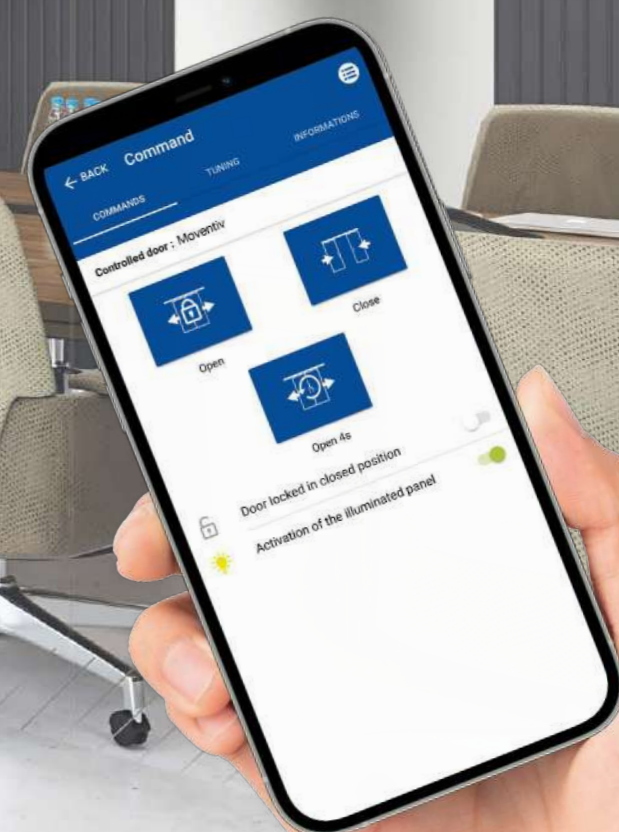
A touchless motorized hardware for sliding doors: MOVENTIV® is an innovative, ultra-quiet, high-performance technology that can be controlled remotely via a smartphone application and with a wide range of accessories.

+ Ultra-silent: a new generation linear motor



BENEFITS OF THE APP Your daily companion

Your smartphone is your remote control.
But the application goes even further!





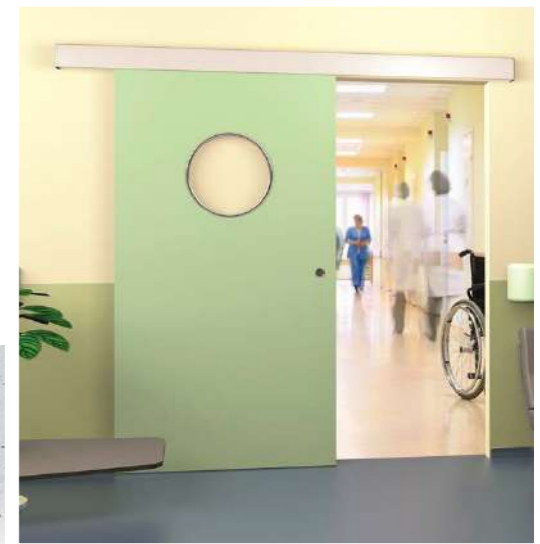
SOFTCLOSE

Product sheet



SOFTCLOSE is an innovative solution to separate reception and hallways that uses a mechanical adjustable timer to control closing speeds from 0 - 60 seconds. It utilizes a mechanic system to ensure soft and silent closing or opening making it perfect for any reception area.

+ No power supply



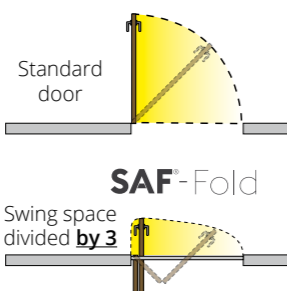
Product sheet



SAF® FOLD

SAF-FOLD is the solution when conventional sliding doors cannot be fitted. A genuine response to the problem of operating doors faced by persons with reduced mobility. Door swing space divided by 3 compared to a standard swing door; saves space when the door is open.

+ Save space



Product sheet



MOVENTIV®

MOVENTIV® 60 is the ideal solution for the automation of your sliding doors, wherever you want to install it. Its timeless design and compact size make the MOVENTIV® an indispensable product for your projects.

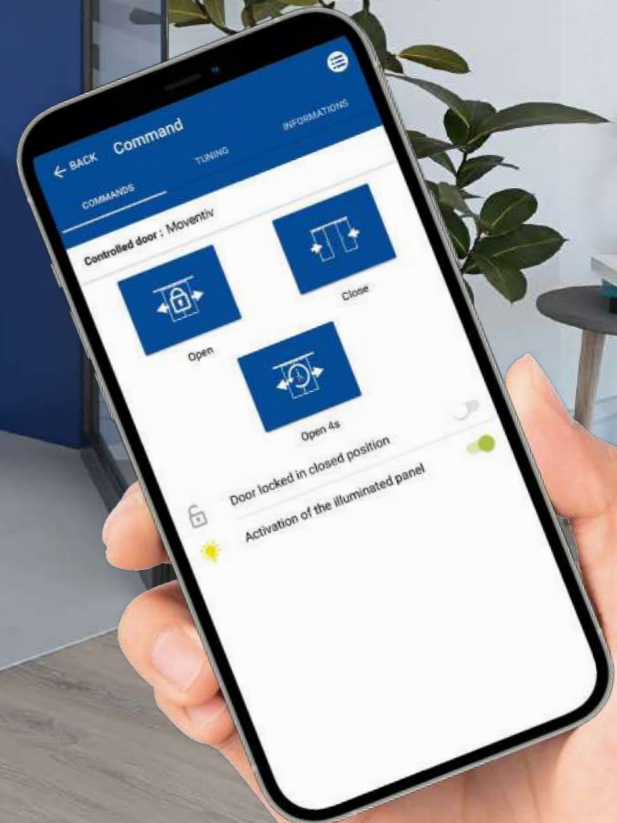
A touchless motorized hardware for sliding doors: MOVENTIV® is an innovative, ultra-quiet, high-performance technology that can be controlled remotely via a smartphone application and with a wide range of accessories.

- + Opening and closing speed easily controlled



BENEFITS OF THE APP Your daily companion

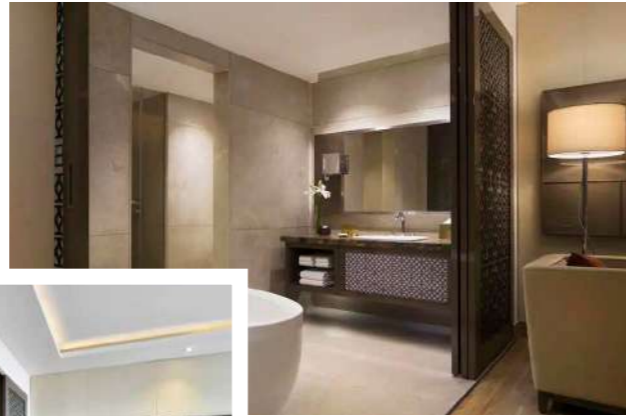
Your smartphone is your remote control.
But the application goes even further!



Mantion exceptional achievements worldwide



JW MARRIOTT HOTEL - MUMBAI AIRPORT



PLACE 10 RESIDENTIAL COMPLEX - CALGARY



DUBAI

BURJ KHALIFA



THE ADRESS DOWNTOWN

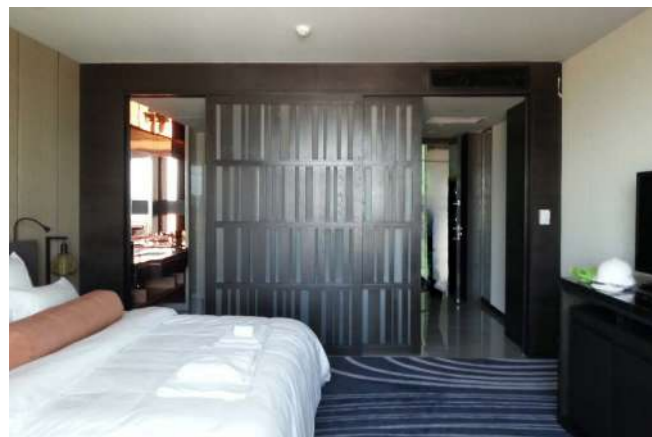
THE ADRESS BOULEVARD



NATO - BRUSSELS



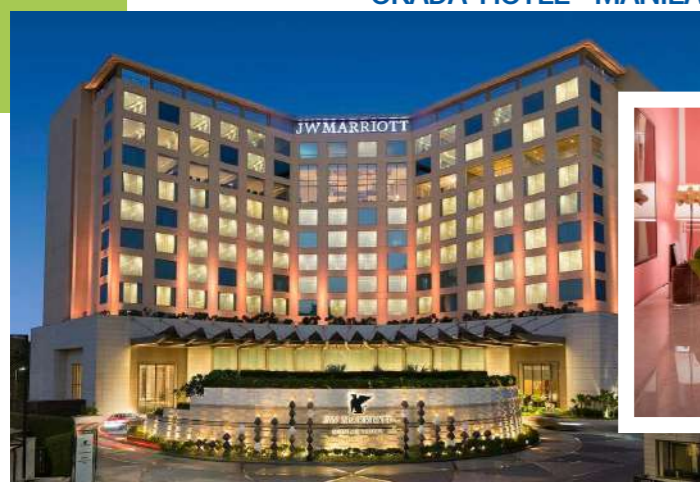
PULLMAN HOTEL IN VUNG TAO - VIETNAM



SRI SHARAVI BEACH VILLAS & SPA - SRI LANKA



OKADA HOTEL - MANILA



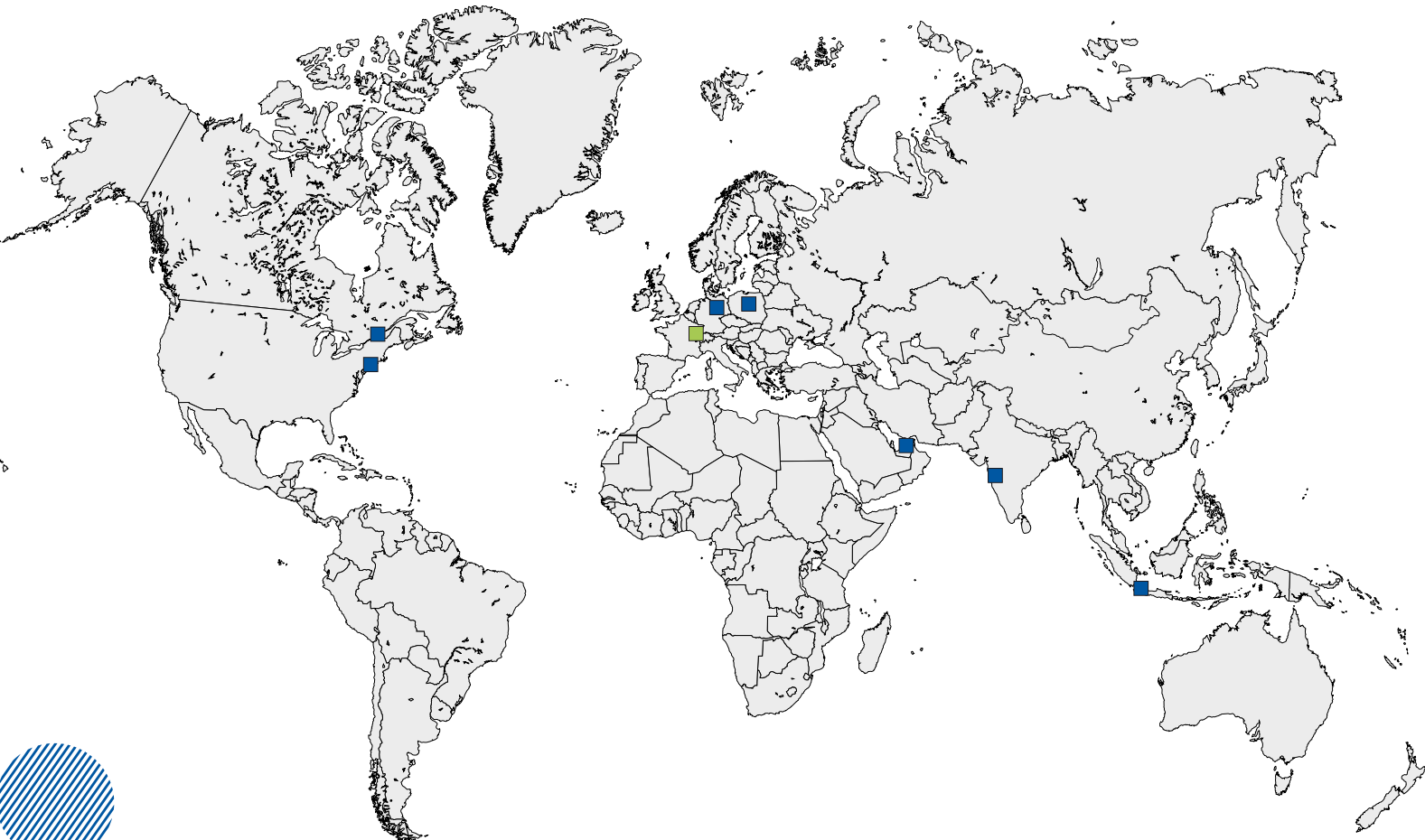
CITY WALK





MANTION® SAS

7 rue Gay Lussac | FRANCE - 25000 Besançon
Tél. + 33 3 81 50 56 77 | Fax. + 33 3 81 53 29 76
E-mail: export@mansion.com



Allemagne / Autriche

Germany / Austria

Mantion Baubeschläge GMBH

Dieselstraße 18
D-42579 HEILIGENHAUS
Tél. + 49 2056 58 26 90
Fax. + 49 2056 58 26 99
Email : info@mansion.de
www.mansion.de

Moyen Orient

Middle East

Dubaï Branch Office

Jafza South, unit no. S101 23 O 032,
Jebel Ali Free Zone, Dubai, UAE
Dubai & Bahrain : Tél. +971 56 174 58 44
Reste du Moyen Orient : +971 56 739 66 11
Email : export@mansion.com
www.mansion.com

Asie du Sud-Est

South-East Asia

Mantion South-East Asia

Sovereign Plaza Lantai 8 Unit D E
Jl. TB Simatupang No.Kav. 36, Kec. Cilandak,
Jakarta Selatan, 12430
INDONESIA
Email : export@mansion.com
www.mansion.com

Europe de l'Est

East Europe

Mantion Polska

ul Boruty 2a
PL-03 769 WARSZAWA
Tél. + 48 22 818 77 22
Fax. + 48 22 818 99 78
Email : biuro@valcomp.com.pl
www.valcomp.com.pl

Inde

India

Mantion India Private Ltd

G-19, T.V. Estate, 248/A, S.K. Ahire Marg. Worli
Mumbai - 400030. INDIA
Mobile. +91 (0) 9819 30 38 78
Email : support.india@mansion.com
www.mansion.com

Amérique du Nord

North America

Mantion Canada

12-360 boul. Séminaire N
Saint-Jean-sur-Richelieu
Québec J3B 5L1
Tél. + 1 (450) 529 1315
E-mail : contact@mansion-na.com
www.mansion.ca

Mantion USA

10-34 44th Drive. 2nd Floor.
Long Island City
11101 NEW YORK
Tél. + 1 (475) 289-0254
E-mail : contact@mansion-us.com
www.mansion.us