



BOLON

We are passionate.
The ones that follow our hearts.
The ones that never stand still.
We are dreamers and innovators.
Humble and confident.
We are all over the world.
And always down to earth.
We believe in creating new dimensions
by challenging traditional boundaries.
Designing great experiences is our game.
And we always play to win.
That's why we deliver beautiful woven
design with an ambition to make
the everyday more attractive.

We are Bolon and we are
innovators by heart.

FLOORING AND RUGS 2023

04 \	ANNICA AND MARIE	62 \	BOLON BY JEAN NOUVEL DESIGN
06 \	PROUDLY PRESENTING OUR PRODUCTS	64 \	BOLON BY YOU
10 \	FLOORING – THE LATEST NEWS	66 \	BOLON ORIGINAL TILES
24 \	FLOORING COLLECTION	68 \	BOLON STUDIO™
26 \	ARTISAN	74 \	BOLON RUGS
30 \	BKB	78 \	BOLON RUGS BY PATRICIA URQUIOLA
32 \	BOTANIC	80 \	BOLON RUGS BY JEAN NOUVEL DESIGN
36 \	CREATE	82 \	ACOUSTIC FLOORING
38 \	ELEMENTS	84 \	ART OF PERFORMANCE
42 \	EMERGE	88 \	SUSTAINABILITY
44 \	ETHNIC	92 \	DURABILITY
46 \	GRAPHIC	96 \	CLEANABILITY
50 \	NOW	100 \	CERTIFICATIONS & DECLARATIONS
52 \	SILENCE	102 \	OUR REFERENCES
54 \	TRULY	116 \	SUPPORT AND SERVICE
56 \	BOLON BY PATRICIA URQUIOLA		
58 \	MISSONI HOME		



Always busy, Always fun

“As usual we’ve been busy. We have thoroughly examined the colour wheel and carefully handpicked Bolon’s very own expression when it comes to colour. With insight into all the various colour systems around the world, we’ve created our own map. Done the puzzle – colour by colour. The updated collections Artisan and Botanic now lay the foundation for Bolon’s further development.”

– ANNICA EKLUND, CCO

“We always say that if Bolon stops being fun, we’re out. Our relaunched Bolon Studio is just that – creativity at its best. Playful and fun. Gorgeous, of course, introducing new shapes making this concept a fantasy-come-true and a designer’s tool with mind-blowing options to hyper-personalized flooring. Calculated symmetry with endless possibilities. We really love it – very Bolonish as we say at home!”

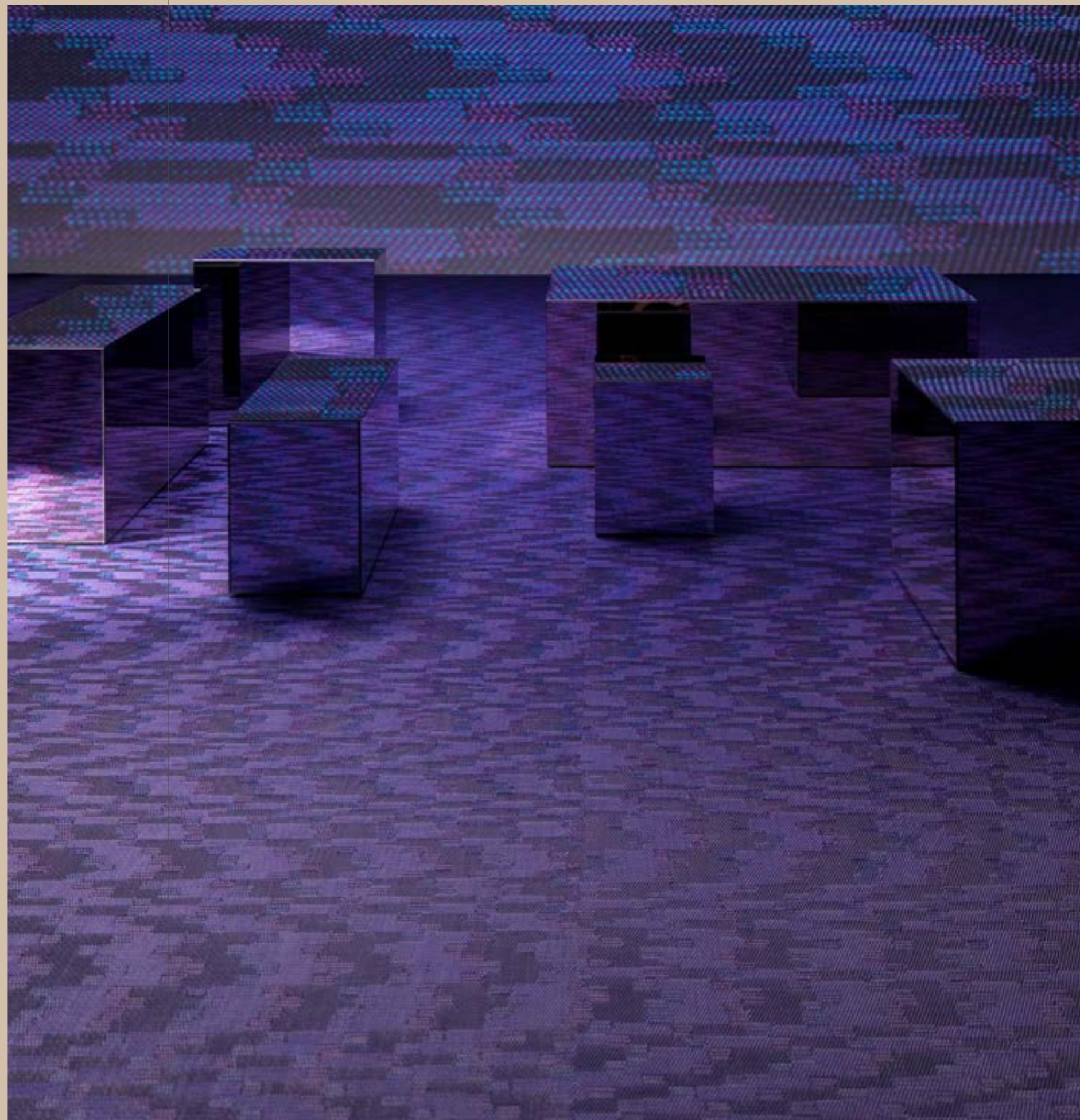
– MARIE EKLUND, CEO

PROUDLY PRESENTING OUR PRODUCTS

What pleases the eye comes in many shapes and forms. The wide range of Bolon flooring and rugs gives you the freedom to choose bespoke products and design combinations, making your project truly unique.

Our flooring designs come in a variety of collections. The design concepts Bolon Studio and Bolon By You even let you create hyper-personalized designs.

TRULY: 100%





ARTISAN: Spring

FLOORING

BOLON ORIGINAL

Bolon Original involves our standard collections, all proudly designed and produced by the Bolon design team in Ulricehamn, Sweden. Our flooring can be produced as rolls, 50 x 50 cm tiles, and Bolon Studio tiles. The product types available for Bolon Original vary depending on the collection.

NEWS! BOLON STUDIO™

Curated shapes for hyper-personalized flooring. Bolon Studio is a seductively stylish concept, a woven flooring renaissance playing with spatial intelligence. Simple shapes at first glance... But when put together these curated tiles build mind-blowing immersive expressions.

BOLON BY YOU

The Bolon By You concept is a simple 3-step process that allows you to create your own personally designed flooring. It features both roll and tile patterns, in four warp, and twelve weft colours.

INTERNATIONAL COLLABORATIONS

Over the years, Bolon has enjoyed collaborations with our international friends Missoni, Jean Nouvel Design, and Patricia Urquiola. Together with these world-renowned designers, Bolon has created collections that reflect both contemporary industrial design and architecture, as well as haute couture.

ACOUSTIC FLOORING

Our acoustic flooring offers increased impact sound insulation by reducing the transmission of footstep noise to rooms below. The additional thickness also offers comfort underfoot.

CUSTOMISE

There are nearly endless design possibilities for creating and customising Bolon flooring. We can meet most design requests and ideas. Contact our sales staff for successful customised solutions.

RUGS

BOLON RUGS

By combining the benefits of Bolon flooring with the versatility of a rug, Bolon Rugs serves as another option. Every rug is made-to-measure, giving you the chance to play with sizes and dimensions and to choose from all Bolon Original collections.

Some of our collaborative collections are also available as rugs. In 2023, Rugs will be available as Bolon Rugs by Patricia Urquiola and Bolon Rugs by Jean Nouvel Design. These rugs come with unique preselected trimming designs.

MISCELLANEOUS








GREEN WELD

Bolon Green Weld is an innovative cold-welding product that is non-hazardous for the flooring installer.

NO GLUE

Bolon NoGlue® is a tape that can be used as a non-permanent installation method for temporary installations where traditional adhesives are not possible to use. The product is compatible with our standard tiles and planks for wall-to-wall installations. Using Bolon NoGlue® also makes our flooring recyclable in the future when it reaches the end of its product life.

SYMBOL GUIDE

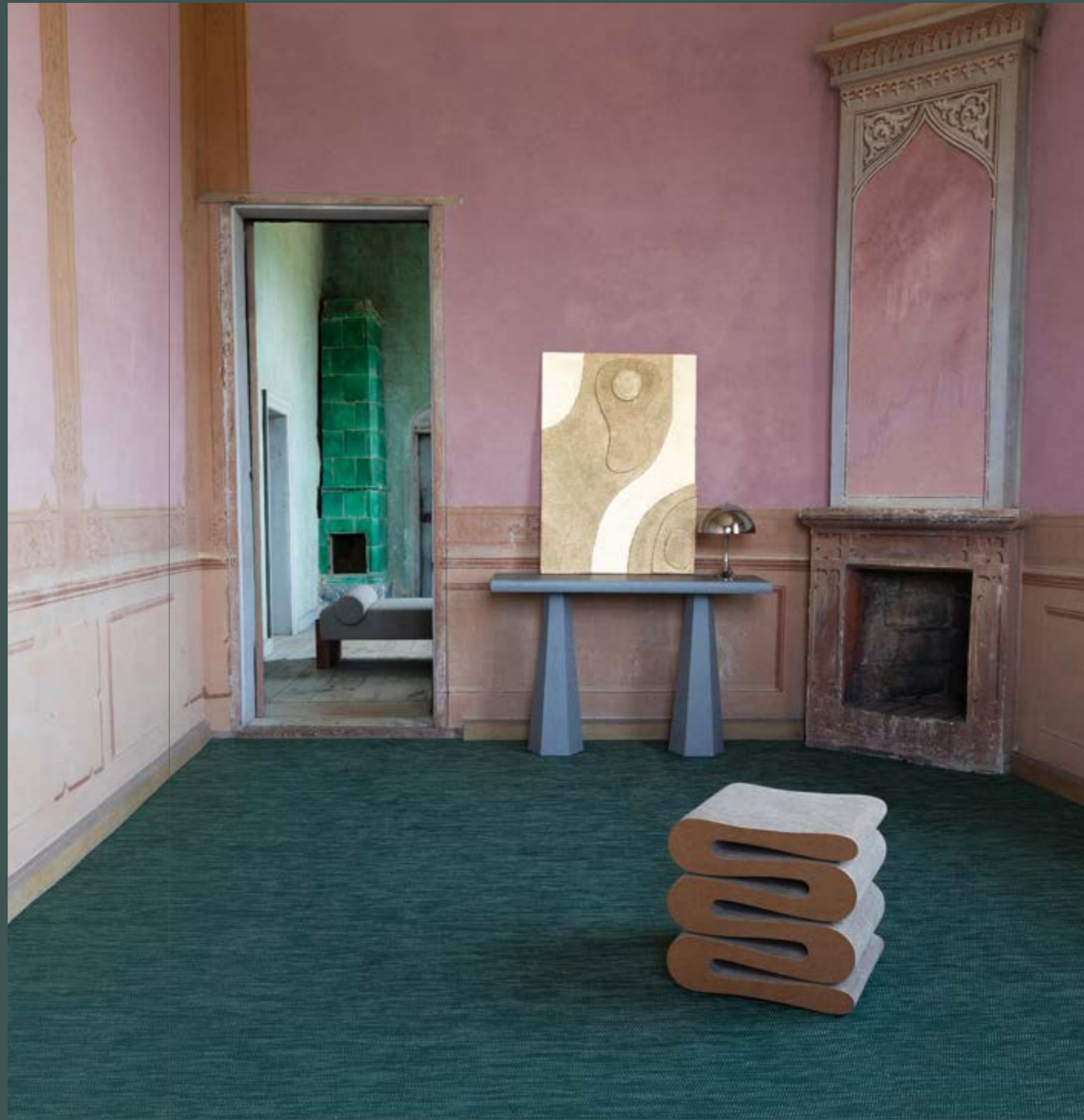
-  Rolls
-  Rugs
-  Tiles
-  Planks, long weft
-  Acoustic flooring
-  Planks, short weft
-  Bolon Studio™

FLOORING – THE LATEST NEWS

Happily presenting a bonanza of colours with the updated Artisan and Botanic collections. By doing so we have covered a broad colour scale. A scale where the eye travels effortlessly from colour to colour – with a distinct identity and well thought through in its entirety.

Another announcement is that we have reshaped Bolon Studio. This concept of different tiles indulges in geometric, graphic, and organic shapes. A kaleidoscope of wondrous flooring designs made possible, by mixing and matching textures and colours from all the Bolon collections! New dimensions, to shape things up and make any floor a fantasy come true.

BOTANIC: Library





ARTISAN: Wild / Water / Play / Ivory / True



ARTISAN: Wild / Water / Play

Colours for every heartbeat. You feel the Artisan collection – vibrating with colour, energetic and alert.

A combination of characters presenting play and drama if you will. Ready to move you.

FLOORING NEWS 2023



ARTISAN: Chalky / Spring / Fresh / Love / Ink

FLOORING NEWS 2023



BOTANIC: Chestnut / Blanche / Honey / Vintage / Canyon / Spearmint



BOTANIC: Chestnut / Blanche / Honey / Spearmint / Vintage

Colours for every creation. With softer expressions, the Botanic colours transcends what first meets the eye.

It's time to create and complement with new classics.

FLOORING NEWS 2023



BOTANIC: Vintage / Blanche / Canyon / Honey / Spearmint



BOLON STUDIO – LINK: ARTISAN: Love / BIGGER: ETHNIC: Kaise / BOTANIC: Vintage / ARTISAN: Quartz



BOLON STUDIO – LINK: ARTISAN: Love / BIGGER: ETHNIC: Kaise / BOTANIC: Vintage / ARTISAN: Quartz

Shape it up! Curated shapes for hyper-personalized flooring.

Bolon Studio is a seductively stylish concept for us creatives, innovators, and dreamers. Simple shapes at first glance... But when put together these curated tiles build mind-blowing immersive expressions.

Your own fantasy-come-true.

FLOORING NEWS 2023



BOLON STUDIO – LINK: NOW; Silver / ARTISAN: Quartz / Play

A LOOK AT OUR ENTIRE
**FLOORING
COLLECTION**

Our high-end design flooring is the result of a combination of sustainable aesthetics and durable functionality. All Bolon flooring is based on the characteristic Bolon vinyl threads and the woven three-dimensional structure – creating the unique Bolon design.

Our collections offer colours, textures, and patterns with endless possibilities for any given interior design project. For more information about each article's properties, please see the fold-out or bolon.com





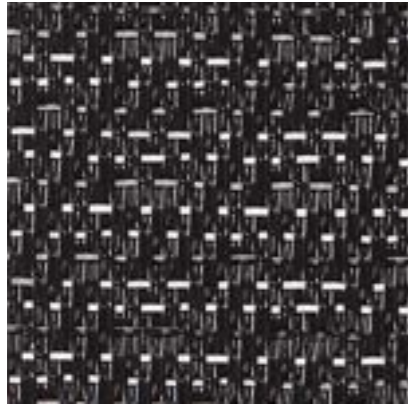
33

HEAVY
COMMERCIAL

Artisan is a lively and energetic collection – characteristics that are now enhanced. With a beautiful balance between the colours of the warp and weft as well as its structure.

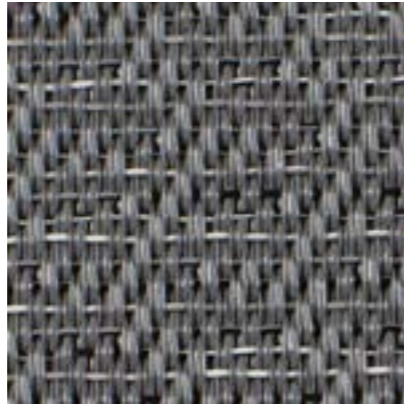
New Artisan has a strong identity, with colours offering more combinations both within the collection itself and with other products by Bolon.

NOIR



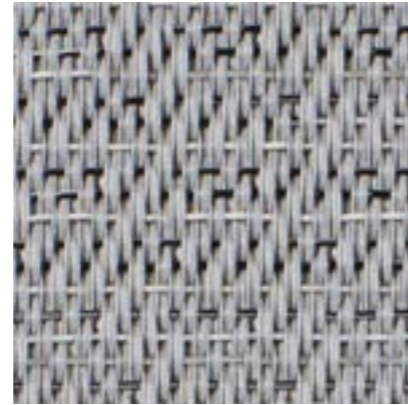
114 152 114 180

SLATE



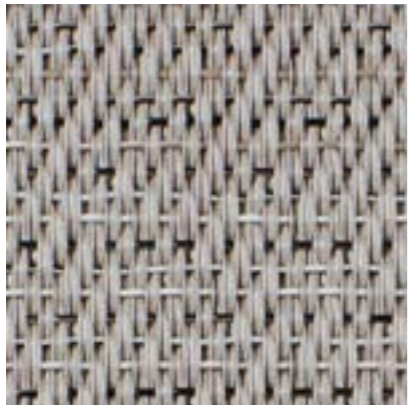
102 739 102 789

CONCRETE



108 022 108 031

ECRU



102 738 102 788

CHALKY



114 144 114 172

JADE



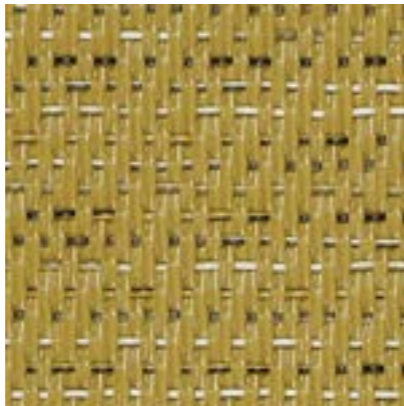
108 024 108 033

FRESH



114 149 114 177

SPRING



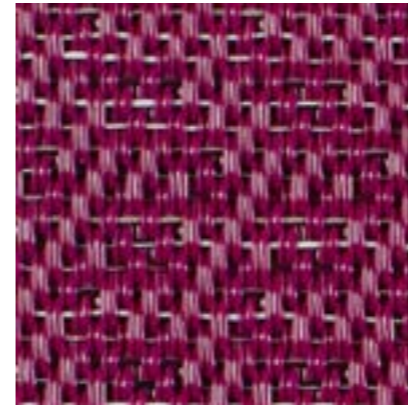
114 151 114 179

WILD



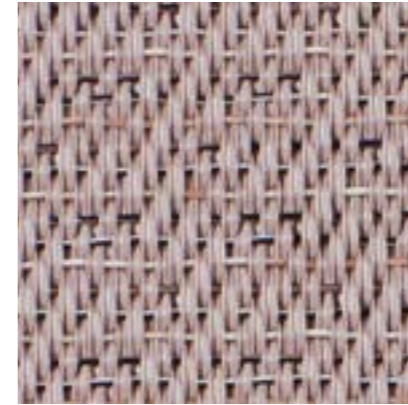
114 150 114 178

FUCHSIA



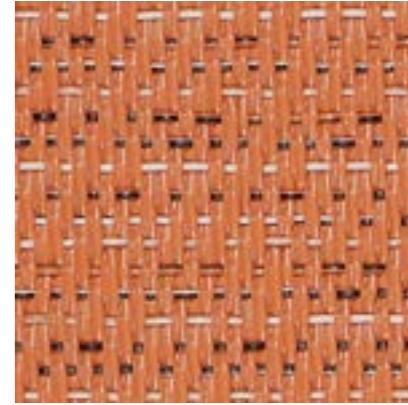
103 637 103 639

QUARTZ



108 123 108 125

PLAY



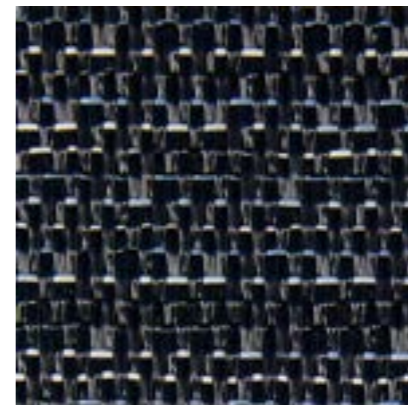
114 146 114 174

LOVE



114 145 114 173

INK



114 153 114 181

IVORY



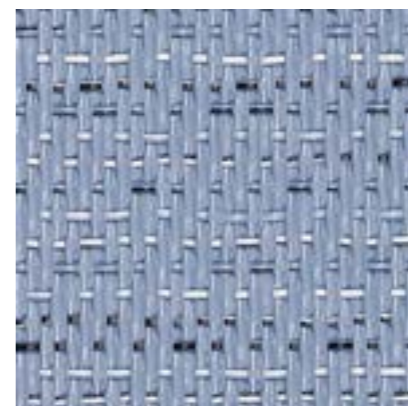
103 591

TRUE



114 147 114 175

WATER



114 148 114 176

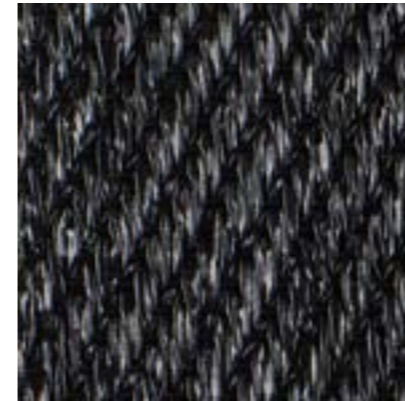


BKB: Sisal Natur Black / Sisal Plain Mole / Sisal Plain Beige / Sisal Plain Sand

32
GENERAL
COMMERCIAL

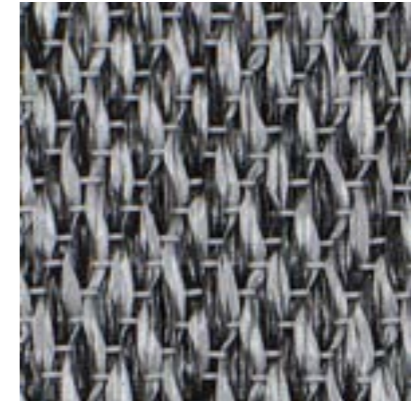
BKB was our first collection and is enduringly popular. The collection offers a broad, neutral colour palette - a feature that optimizes design versatility - combined with a classically stylish pattern and a soft, textile feel, resulting in timeless flooring.

SISAL PLAIN BLACK



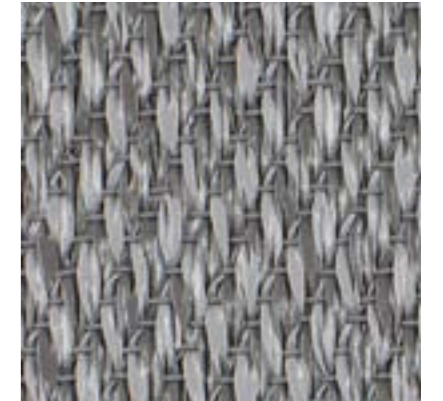
102 753 102 798

METALLIC ALPHA



102 757 102 801

SISAL PLAIN GRANITE



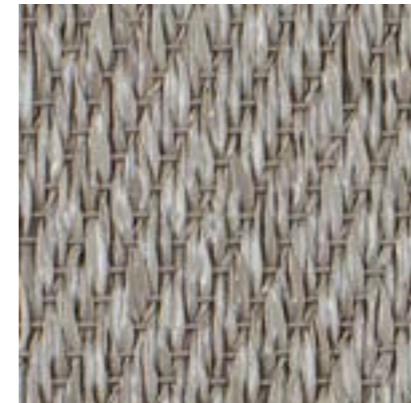
102 751 102 796

SISAL PLAIN STEEL



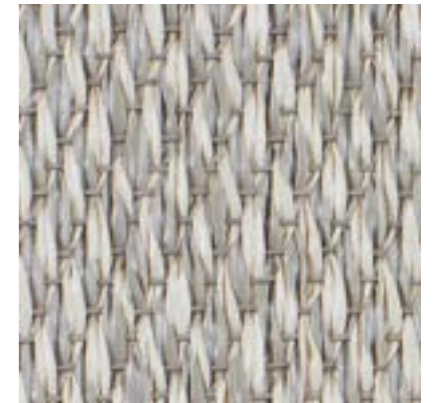
102 752 102 797

SISAL PLAIN MOLE



102 749 102 794

SISAL PLAIN SAND



102 748 102 793

SISAL NATUR BLACK



102 755 102 799

SISAL PLAIN BEIGE



102 745 102 791



32

GENERAL
COMMERCIAL

Carefully selected colour tones suitable for the tactile and soft feeling of the weave's structure. An even more balanced and long-lived colour scale, now without any sharp-edged colours. Botanic is a classic collection – elegant, embracing, and amiable.

BLANCHE



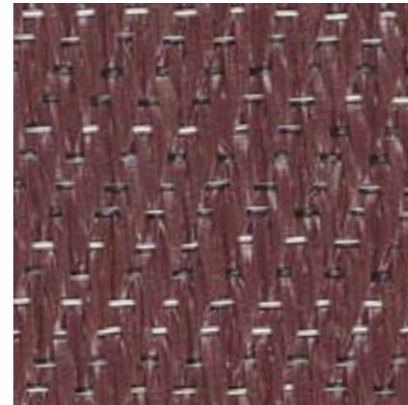
114 198 114 193

CANYON



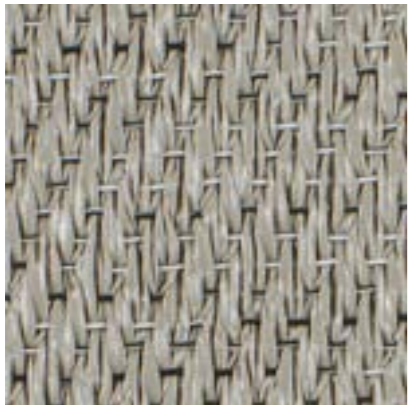
114 158 114 197

CHESTNUT



114 156 114 195

CILIA



102 673 102 825

HONEY



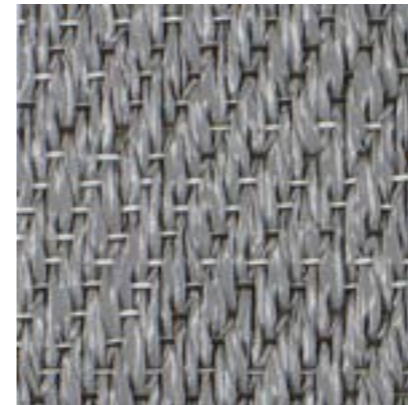
114 155 114 194

LIBRARY



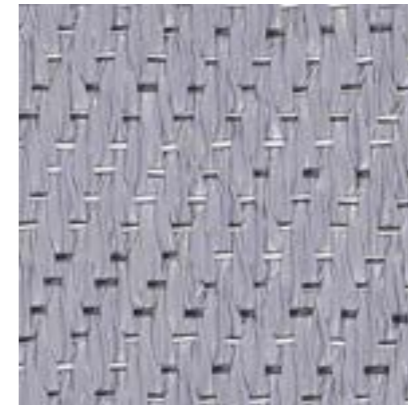
114 161 114 200

OSIER



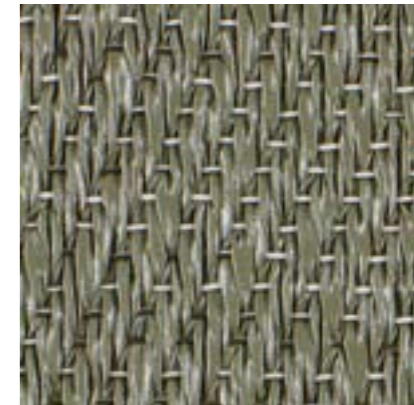
102 674 102 826

RAIN



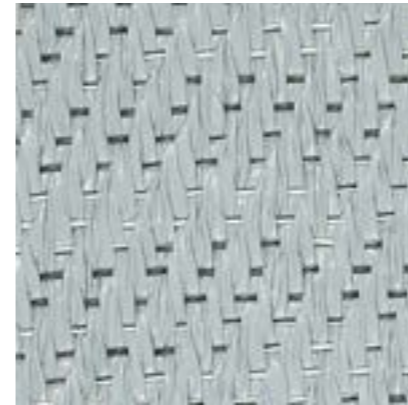
114 159 114 198

SAGE



108 080 108 100

SPEARMINT



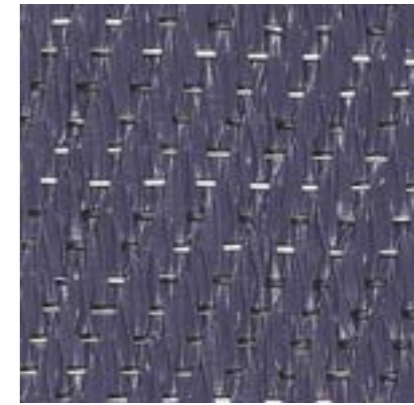
114 160 114 199

TILIA



102 671 102 823

VINTAGE



114 157 114 146

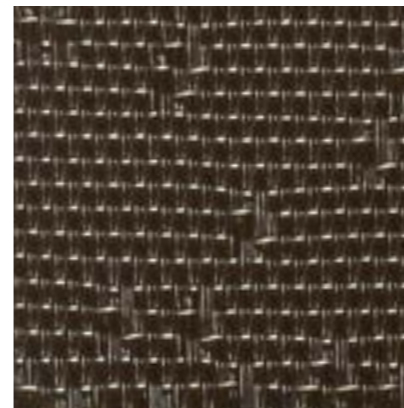


CREATE: Facio

33
HEAVY
COMMERCIAL

Create's profiled yarn and textured surface produce exciting 3D effects, reflecting light and adding visual dynamism to any interior environment. Colors shift between shades of light and dark, depending on the sight line, how the light falls, and how the flooring is laid.

INDUCTO



105 068 105 079

COMAR



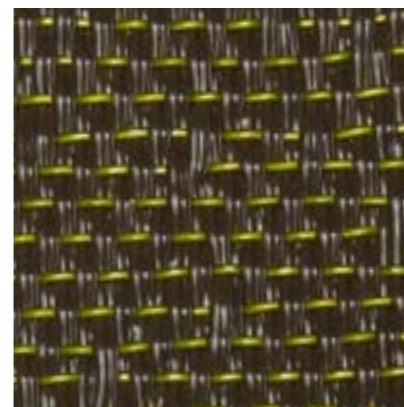
105 064 105 077

FACIO



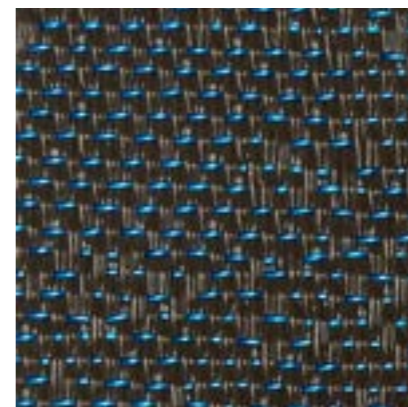
105 066 105 078

CONVERSO



105 060 105 075

FABRICO



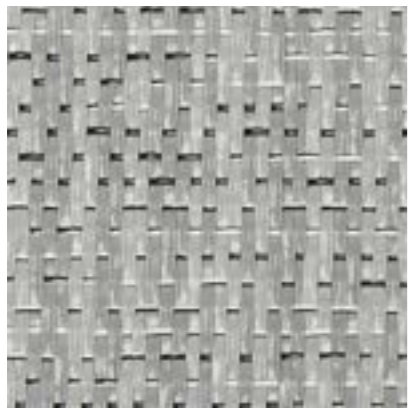
105 062 105 076



33
HEAVY
COMMERCIAL

The Elements collection features a balanced, natural look, drawing inspiration from nature. With its calm base colors and Scandinavian feel, the simple versatility of Elements makes it an exceptional neutral backdrop for diverse interiors.

WOOL



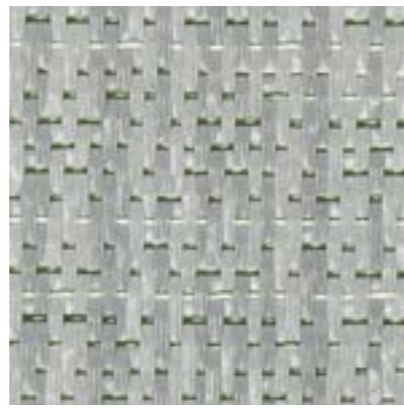
108 275 108 295

FLINT



108 277 108 297

MARBLE



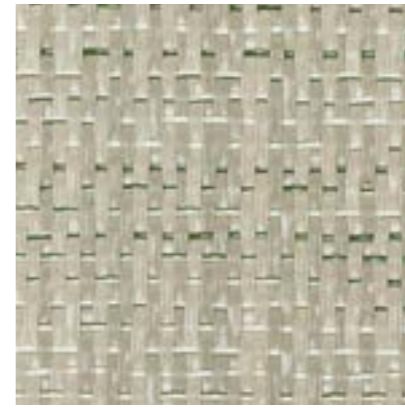
108 278 108 298

LINEN



108 272 108 292

OAK



108 271 108 291

ASH



108 273 108 293

WALNUT



108 276 108 296

SILK



108 279 108 299

BIRCH



108 270 108 290

CORK



108 274 108 294

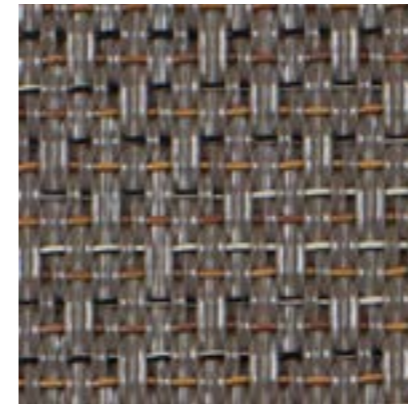


EMERGE: Drift / Sway

33
HEAVY
COMMERCIAL

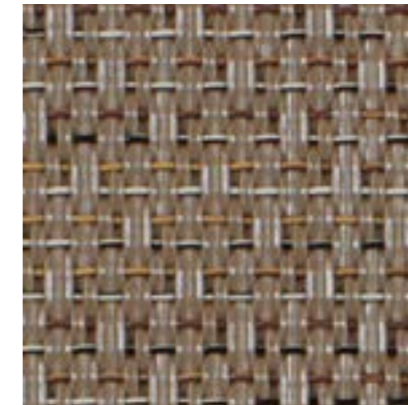
Emerge is a collection revealing new neutral colours as adaptable as nature itself. It brings large flooring surfaces to life by captivating all the natural changes in light and shadow. Developed to complement the materials most used by architects, the Emerge collection offers something that is anything but basic.

DRIFT



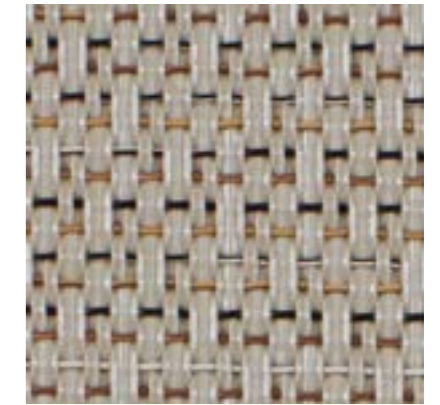
112003 112015

SWAY



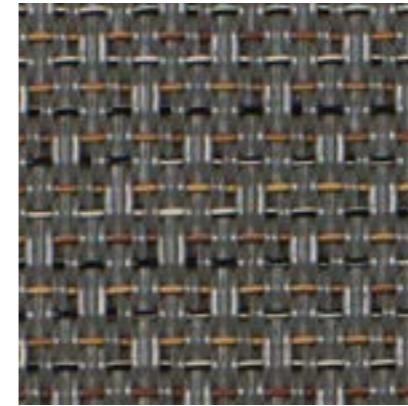
112004 112016

ARISE



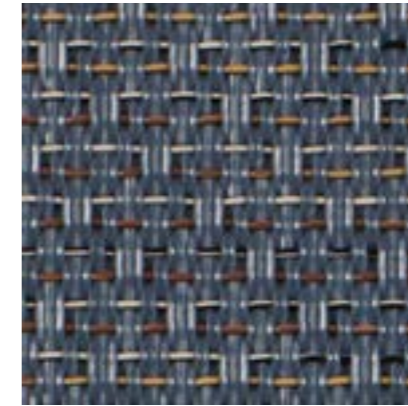
112005 112017

BILLOW



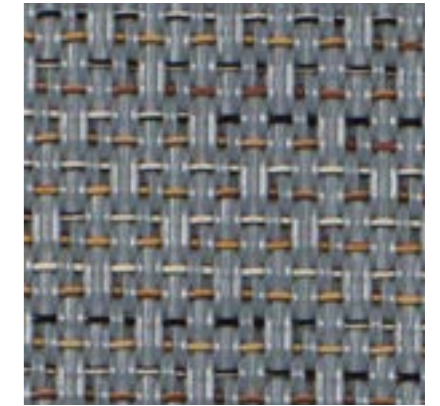
112002 112014

SWIRL



112001 112013

RIPPLE



112000 112012



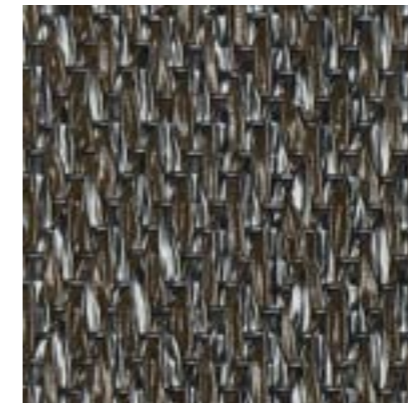
ETHNIC: Gabna

32

GENERAL COMMERCIAL

In the north of our home country, Sweden, the culture, natural light and beauty are quite unique. Ethnic captures these characteristics, featuring patterns reminiscent of earth, stone and rock, with a futuristic metallic shimmer that suggests cold, Nordic light.

ABISKO










102 763 102 807

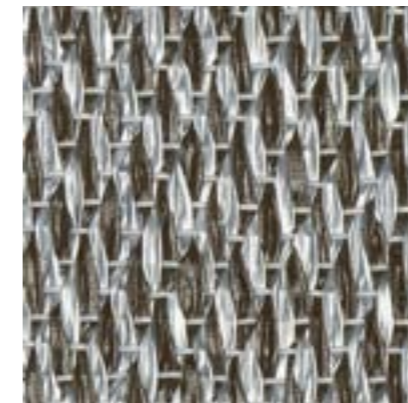
GABNA




103 562

SAIVO







103 559

KAISE





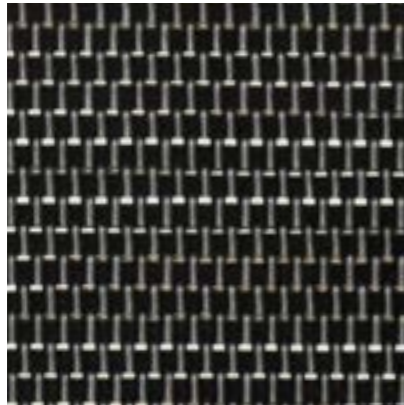


107 762

**33**
HEAVY
COMMERCIAL

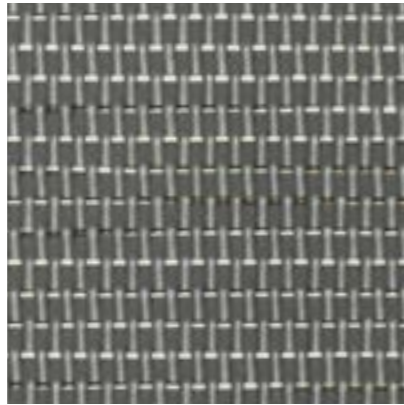
Graphic is our designer flooring solution created for high-traffic environments such as offices, retail outlets and other busy, public spaces. The Graphic collection is particularly well-suited for spaces where a contemporary look and high-performance must be harmonized with a classic, sober ambience.

ETCH



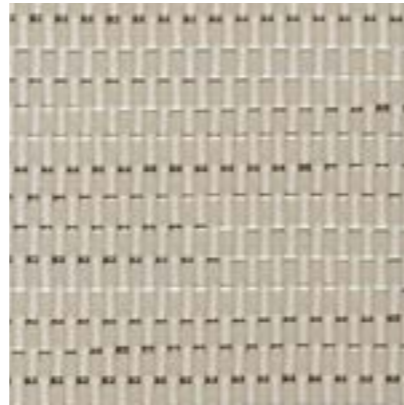
Q ■ Γ
102 773 102 815

STRING



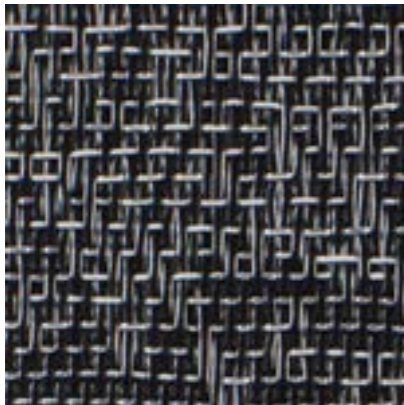
Q ■ Γ
102 772 102 814

MACHE



Q ■ Γ
102 770 102 812

TEXTURE BLACK



■
103 597

TEXTURE GREY



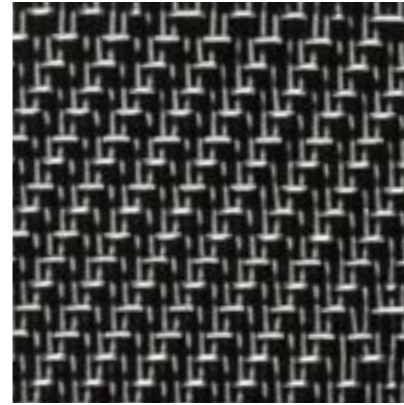
■
103 735

TEXTURE BEIGE



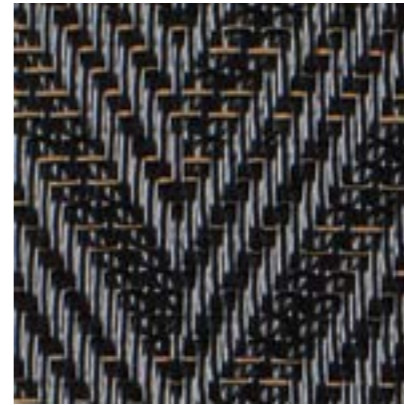
■
103 746

CHECKED



Q Γ
103 595

HERRINGBONE BLACK



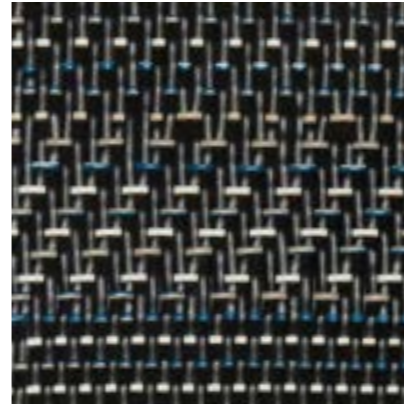
Q Γ
103 230

HERRINGBONE BEIGE



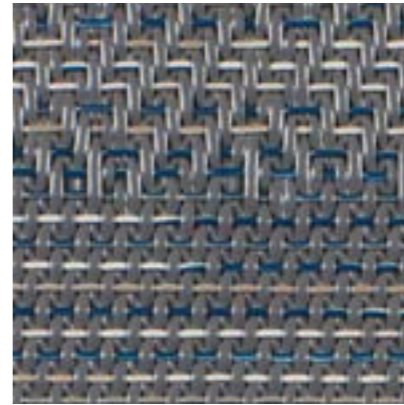
Q Γ
103 226

GRADIENT BLACK



Q Γ
103 642

GRADIENT GREY



Q Γ
108 027

NOW



NOW: Copper

32
GENERAL
COMMERCIAL

The Now collection adds an element of opulence and drama to its surroundings. A metallic shimmer is incorporated in the weave, resulting in visually powerful interior environments with an expressive, yet uniform whole.

ANTHRACITE

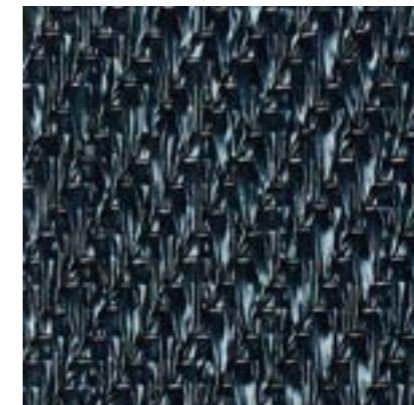







 102 769 102 819

TITANIUM








 108 076 108 343

SILVER








 102 768 102 818

CHAMPAGNE








 102 767 102 817

BRASS








 108 078 108 341

COPPER








 108 077 108 342

SILENCE

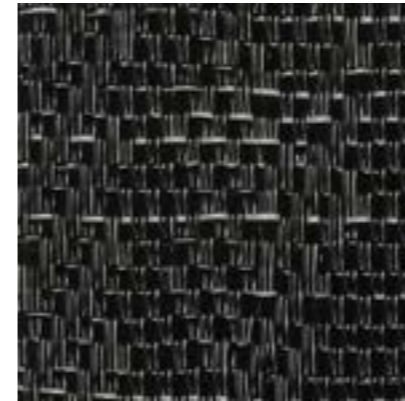


SILENCE: Balance / Sense / Illuminate / Ocular

33
HEAVY
COMMERCIAL

Silence is a sober, elegant flooring collection characterized by warm colors. Soft, structured flooring in brown and grey, inspired by nature, textiles and parquet flooring.

PAUSE











108 025 108 036 108 040 108 038

EMOTION











108 026 108 037 108 041 108 039

BALANCE











106 223 103 706 103 763 103 757

SENSE











106 222 103 705 103 764 103 758

VISUAL











106 221 103 704 103 765 103 759

GRACIOUS





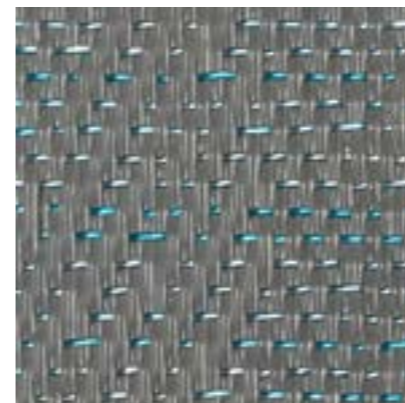






106 220 103 703 103 766 103 760

ILLUMINATE





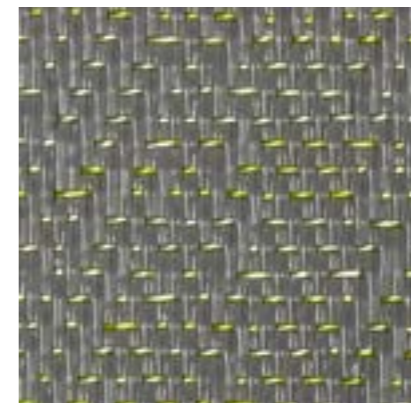






106 065 103 707 103 761 103 755

OCULAR











106 224 103 708 103 762 103 756

TRULY



TRULY: #4 / Precis.

33
HEAVY
COMMERCIAL

Truly is an innovation. Revealing five different patterns – singular faces of Bolon – the collection plays with spatial perception creating an experience of architecture extraordinaire. Magnified formations, colour effects and hyper texture; directing light and working with scale in a way we've not seen before.

#1 / ANYTHING EVERYTHING.



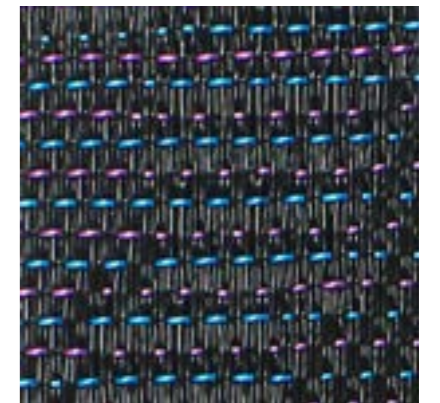
Q Γ
113 613

#2 / DISRUPT AND DISCOVER!



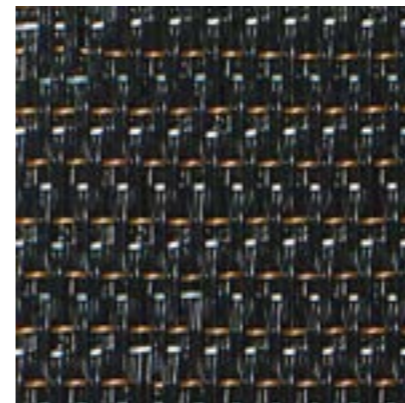
Q ■ ≡ ✦ Γ
113 614 113 622

#3 / 100%



Q ■ ≡ ✦ Γ
113 615 113 623

#4 / PRECIS.



Q ■ ≡ ✦ Γ
113 616 113 624

#5 / I SEE YOU.



Q ■ ≡ ✦ Γ
113 617 113 625

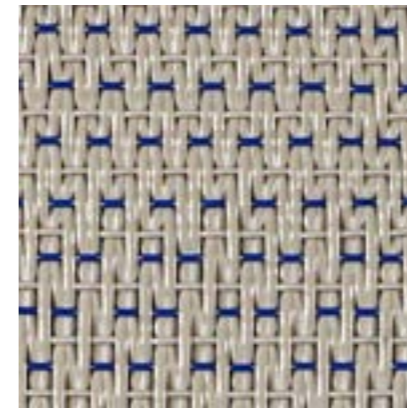


BOLON BY PATRICIA URQUIOLA: Nude Sashiko

33
HEAVY
COMMERCIAL

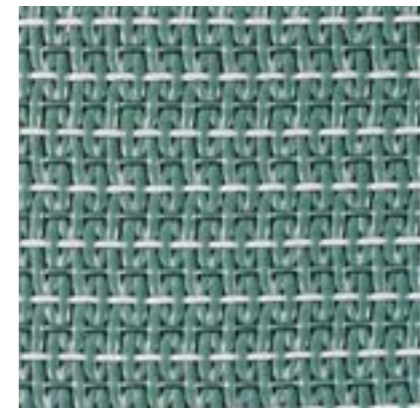
A high-end design collection adding warmth and personality to hotels, offices and other premises. The collection is designed to moderately emphasize the flooring's woven structure and the tradition of stitching techniques.

LIGHT SASHIKO



Q Γ
111 776

SAGE SASHIKO



Q Γ
111 777

GREY SASHIKO



Q Γ
111 778

NUDE SASHIKO



Q Γ
111 779

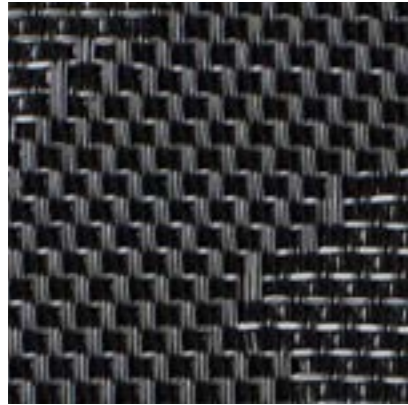


33
HEAVY
COMMERCIAL

Our long collaboration with acclaimed Italian design house Missoni has proven to be a match made in design heaven. Within this collection you'll find visual warmth, exclusivity and Missoni's signature design touch – presented in a rich, vibrant colour palette.

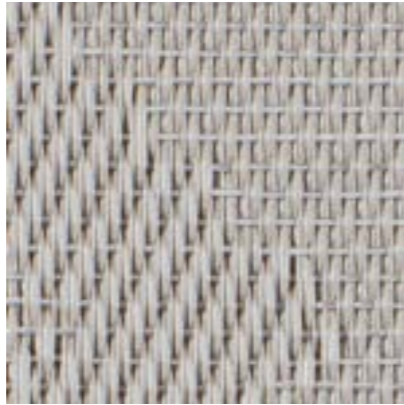
MISSONI HOME: Zigzag Red

ZIGZAG BLACK



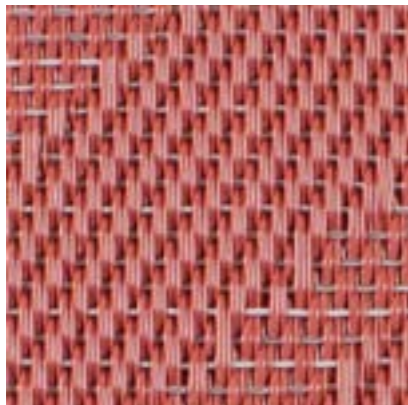
Q
104 269

ZIGZAG SAND



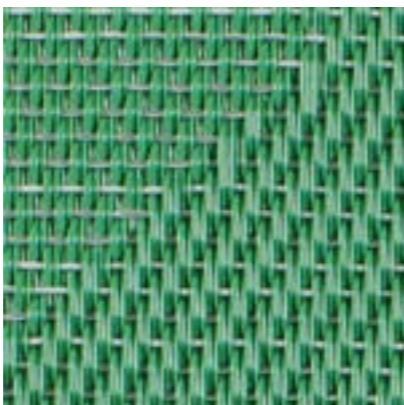
Q
104 278

ZIGZAG RED



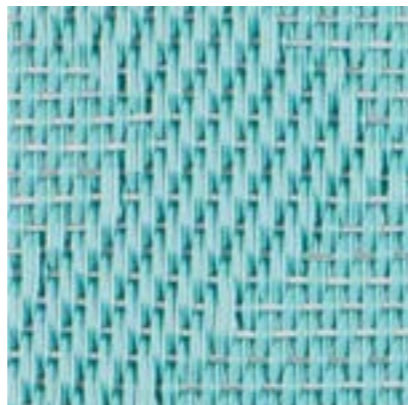
Q
109 600

ZIGZAG GREEN



Q
109 599

ZIGZAG TURQUOISE



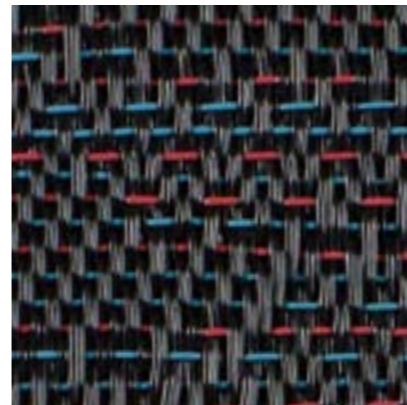
Q
109 598

TRINIDAD



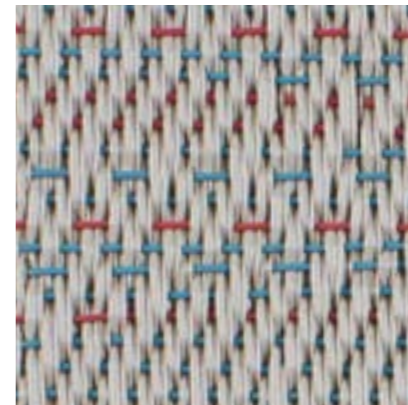
Q
109 574

FIREWORKS BLACK



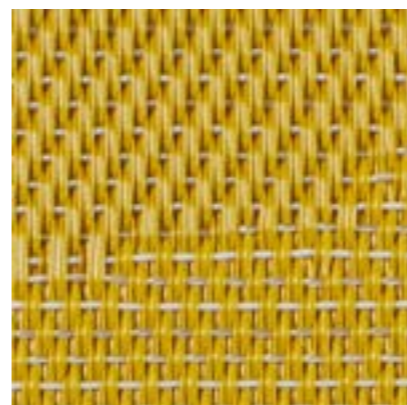
Q
109 579

FIREWORKS WHITE



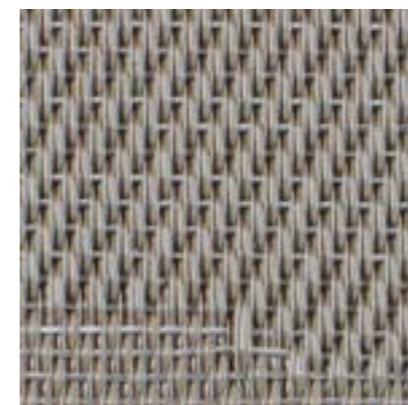
Q
109 583

FLAME PINEAPPLE



Q
109 603

FLAME STONE



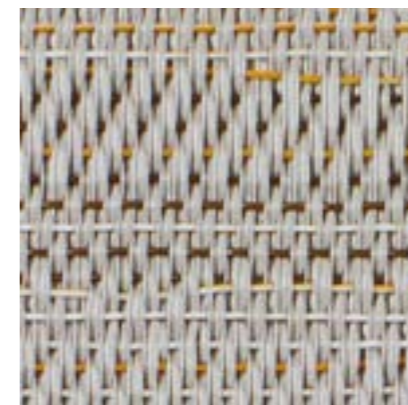
Q
103 349

FLAME PATCH BLACK



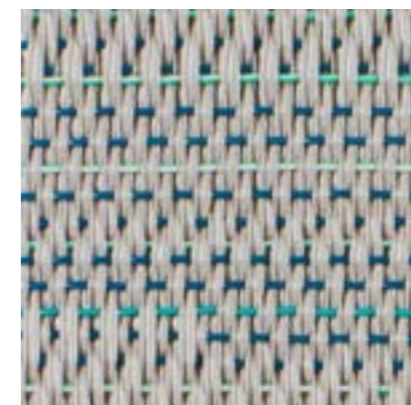
Q
109 611

FLAME PATCH WOOD



Q
109 615

FLAME PATCH LAGOON



Q
109 613



BOLON BY JEAN NOUVEL DESIGN: NO. 04

33
HEAVY
COMMERCIAL

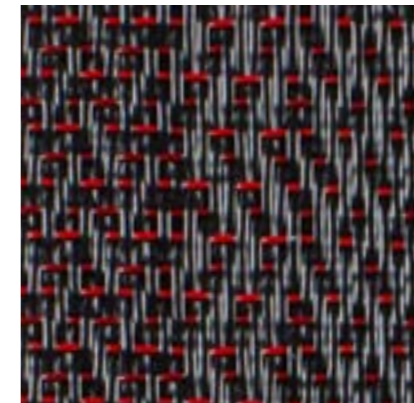
Our collaboration with Jean Nouvel Design has led to this architect-driven flooring concept covering six colour signatures. The flooring amplifies the interior geometry, making it possible to experiment with the layout and the natural flow within an interior space.

NO. 01



Q ■ Γ
106 010 106 017

NO. 02



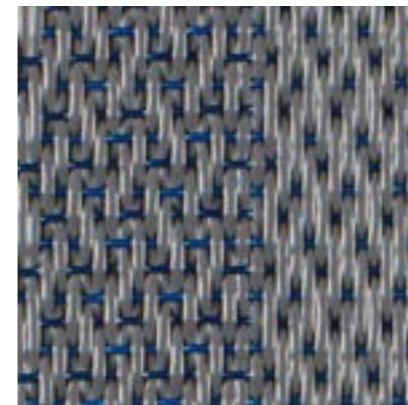
Q Γ
106 009

NO. 03



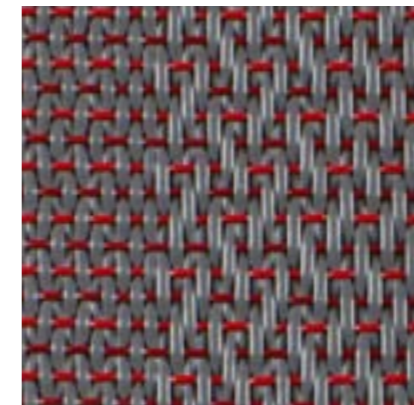
Q Γ
106 011

NO. 04



Q Γ
106 013

NO. 05



Q Γ
106 012

NO. 06



Q ■ Γ
106 014 106 018







BOLON BY YOU: Stripe Black Steel Grey

BOLON BY YOU

We know that every interior project is unique and sometimes requires tailored solutions. That is why we created Bolon By You: a design system that gives you the freedom to easily create personalised flooring. The concept allows you to create designs by combining roll or tile patterns with 4 warp and 12 available weft colours.

- Lets architects and designers create personalised flooring
- Weave on demand
- Environmental certifications and declarations are available
- 15-year warranty
- Durability class 33 – Heavy Commercial

AVAILABLE IN:

-  Rolls
-  Tiles
-  Acoustic flooring
-  Rugs

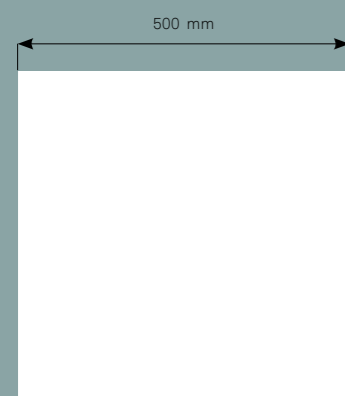
STEP BY STEP

- Choose a pattern, both rolls and tiles are available
- Choose from 4 available warp colours (the vertical yarn)
- Choose from 12 available weft colours (the horizontal yarn)
- Order a sample of your personalised design at [bolon.com](https://www.bolon.com)

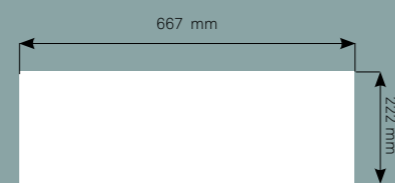
DESIGNING WITH BOLON ORIGINAL TILES

Our original tiles are readily available as stock items and can be ordered in 50 x 50 cm format (and as planks in the Silence collection). Bolon original tiles are also a slightly thicker option and a proven solution for raised floors.

50 X 50 CM TILES



PLANKS



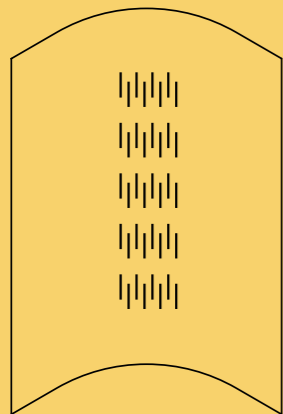
(Only available in Silence)



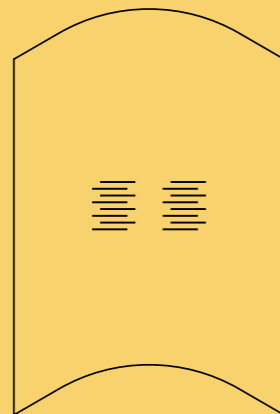
DESIGNING WITH THE NEW BOLON STUDIO™

These products are made-to-order items. Always dynamic and always exact. Starting in 2023 Bolon Studio tiles are supplied in the following shapes: Link, Prism, Hexagon, Wave, Rectangle, Scale, Triangle (in three different sizes), Bigger, Wing, Pillar, and Moves.

WAVE



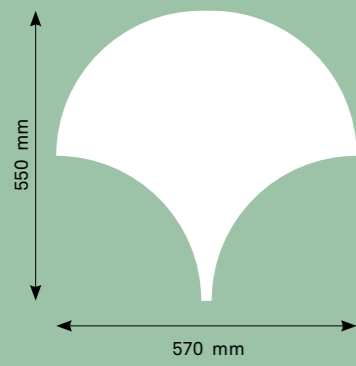
LONG WEFT



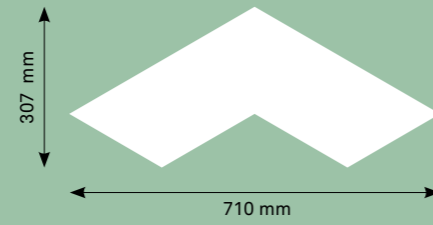
SHORT WEFT



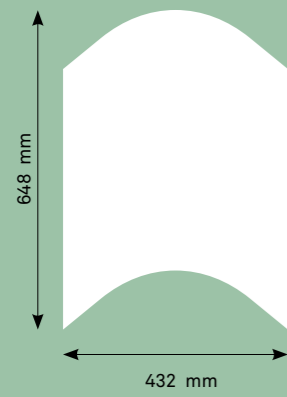
SCALE



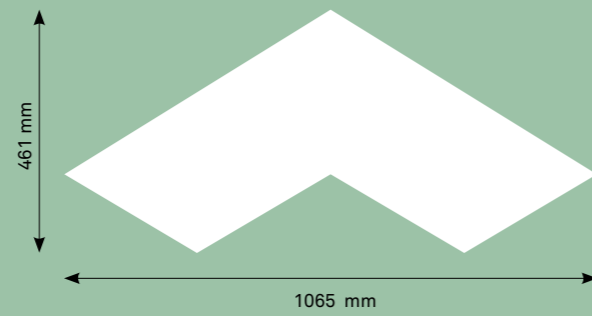
WING



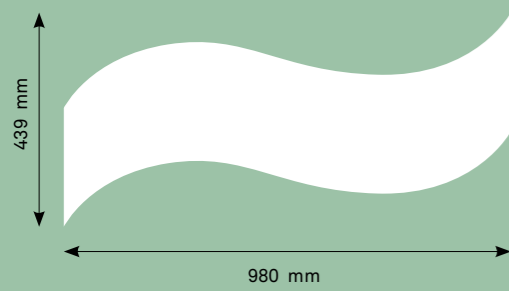
WAVE



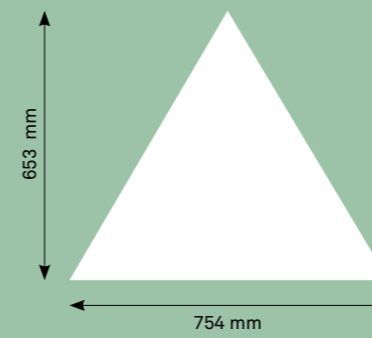
BIGGER



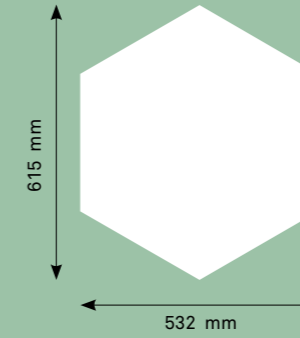
MOVES



TRIANGLE 754



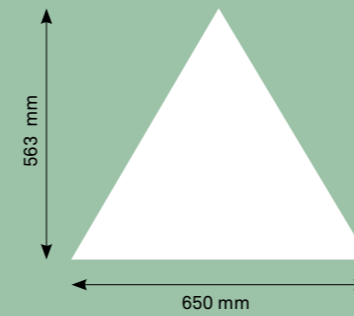
HEXAGON



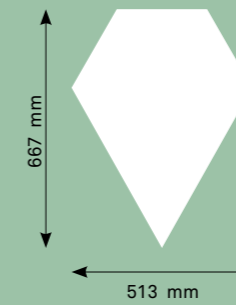
RECTANGLE



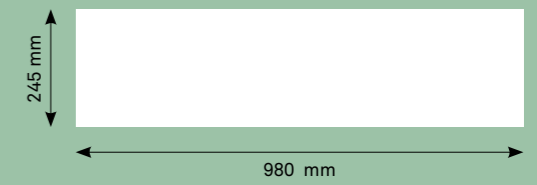
TRIANGLE 650



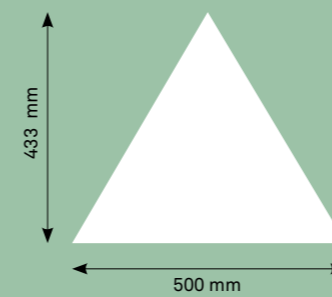
PRISM



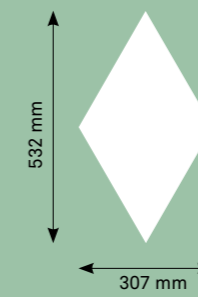
PILLAR

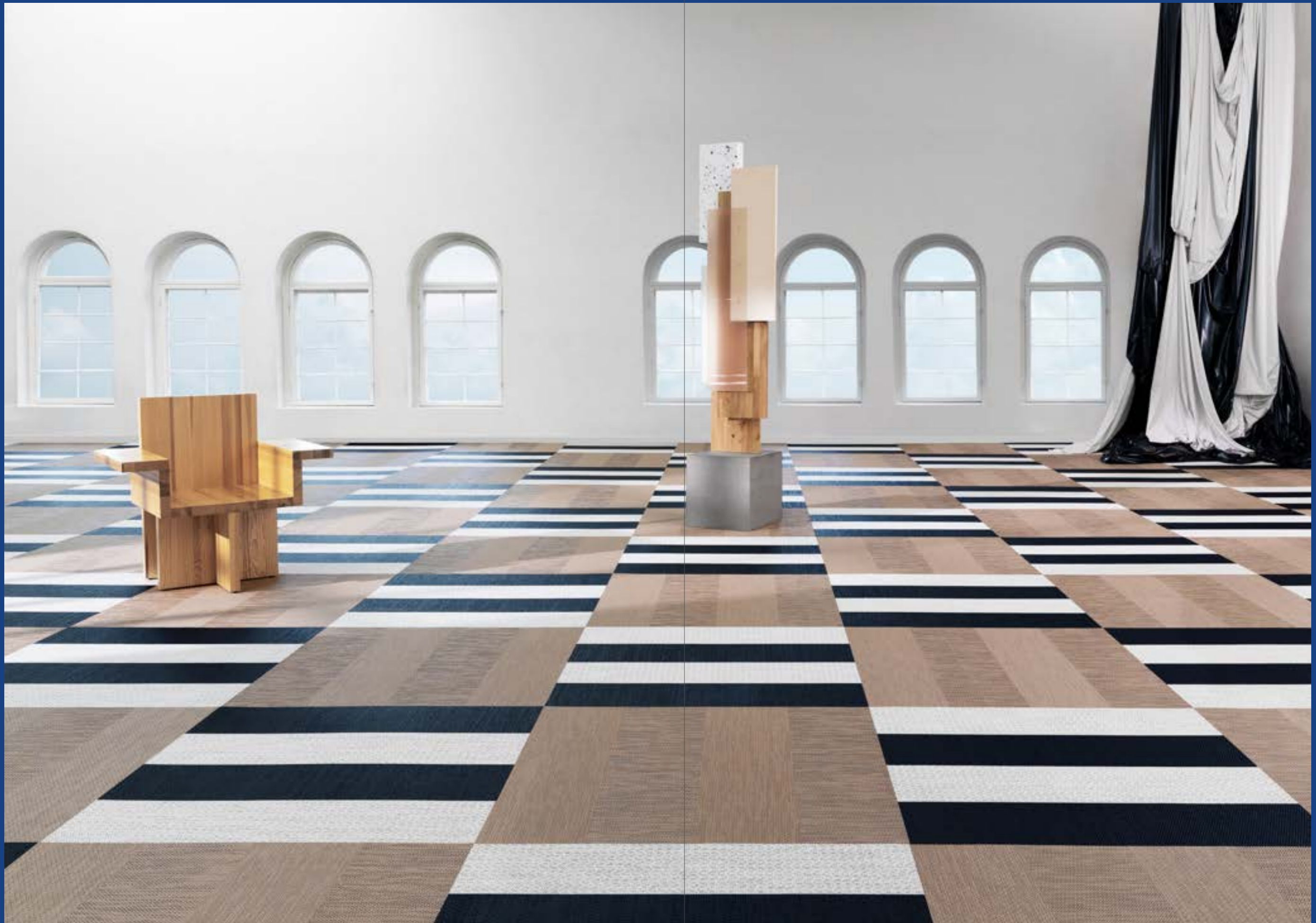


TRIANGLE 500



LINK







BOLON RUGS – BOLON BY YOU: Stripe Black Steel Grey / NOW: Brass

BOLON RUGS

Bolon Rugs combines the benefits of Bolon flooring with the flexibility of a rug. The made-to-measure rugs are perfect for spaces where wall-to-wall coverings are not suitable.

The rugs are produced on demand in Ulricehamn, in the size and dimension you need, from 2 x 2 m to 3,9 x 8 m. Our rugs come with eight edge trimming options available.



BOLON RUGS - GRAPHIC: Herringbone Black with Stripe Sand Gloss trimming
 BOLON RUGS - BOTANIC: Sage with Stripe Sand Gloss trimming



BOLON RUGS - GRAPHIC: Black Herringbone

AVAILABLE COLLECTIONS:

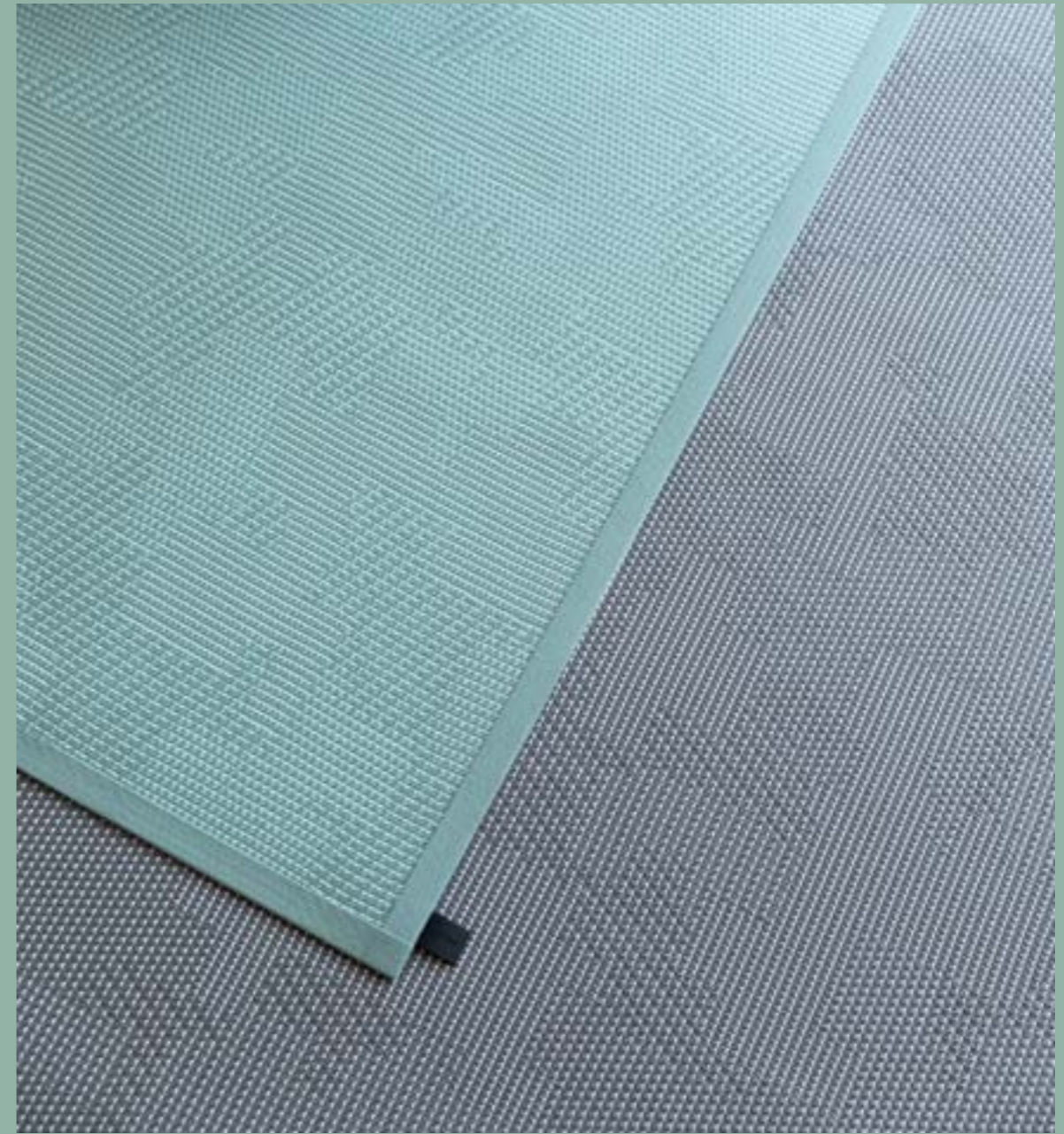
Artisan
 Bkb
 Bolon By You
 Botanic
 Create
 Elements
 Emerge
 Ethnic
 Graphic
 Now
 Silence
 Truly

TRIMMINGS:

Melange Beige
 Melange Grey
 Solid Beige
 Solid Black
 Solid Brown
 Solid Grey
 Stripe Sand Gloss
 Stripe Steel Gloss



BOLON RUGS BY PATRICIA URQUIOLA: Sage Sashiko



BOLON RUGS BY PATRICIA URQUIOLA: Grey Sashiko / Sage Sashiko

Bolon Rugs By Patricia Urquiola is a high-end design collection with sophisticated softness and character. The rug designs are matched with specific trimming styles in harmonizing colours.



BOLON RUGS BY JEAN NOUVEL DESIGN: NO. 01

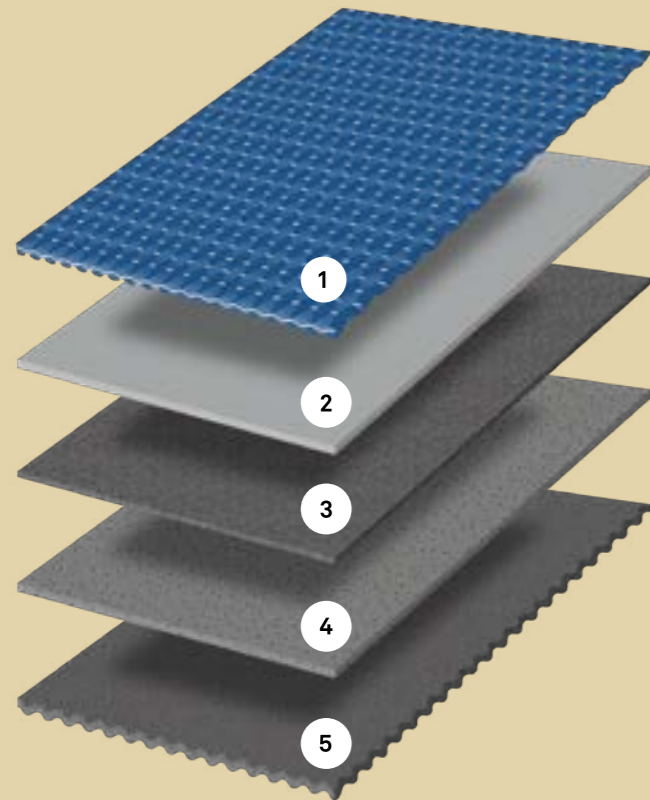


BOLON RUGS BY JEAN NOUVEL DESIGN: NO. 04

An architect-driven concept covering six colour signatures. The collection amplifies the interior geometry. The rug designs are matched with specific trimming styles in matching colours.

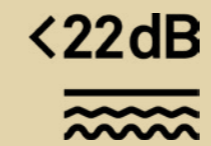
ACOUSTIC FLOORING

With the sound insulation layer, our acoustic flooring is a great choice for premises where sound matters. This is a perfect feature for rooms where you need acoustic insulation to the floor below.



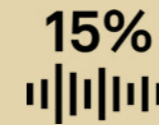
LAYERS – WITH SOUND INSULATION

1. The weave layer consists of vinyl warp and weft yarns tightly woven together
2. The upper backing layer gives the flooring its robustness
3. The middle backing layer consists of glass fibre giving the flooring dimensional stability
4. The bottom backing layer defines the thickness of the flooring and contains recycled material
5. The sound insulation layer consists of a felt material, containing recycled PET bottles, that helps to reduce the impact of sound and noise



IMPACT NOISE REDUCTION

A floor's ability to reduce impact noise is defined by the measured sound level in the room below. The given value describes the reduction of transferred noise. By incorporating a felt layer, the impact noise reduction of our acoustic flooring is 21–22 dB.



15% SOUND ABSORPTION

The sound absorption coefficient defines a flooring's ability to absorb airborne sound. With Bolon acoustic flooring this coefficient is 0.15, meaning that the flooring absorbs 15% of the sound energy. The result is a room with a positive acoustic performance, providing a more comfortable indoor environment.



90% RECYCLED PET BOTTLES

Bolon acoustic flooring sound insulation is partly made from recycled production waste and PET bottles.



ADDING ON TO BOLON PERFORMANCE

The acoustic flooring upholds performance in durability, self-extinguishing fire performance, warranty, and water resistance; adding to the list of unique characteristics of Bolon flooring while also increasing underfoot comfort and softness.

WHERE IT ALL BEGINS

ART OF PERFORMANCE

Bolon is a Swedish high-end design brand specialising in innovative premium flooring and rug solutions for public spaces. All products are developed and produced in Sweden, focusing on sustainability, functionality, and design.

DESIGN

We let quality and innovation meet interior design and architecture. Our high-end design products, both flooring and rug collections are all the result of a combination of aesthetics and functionality. All products are based on the characteristic Bolon vinyl threads and the woven three-dimensional structure – creating our unique Bolon design. Making options nearly infinite.

SUSTAINABILITY

Our production site in Ulricehamn is climate-neutral using only renewable energy and has an integrated recycling plant. Here, production waste is recycled into new backing layers. Our additives are non-hazardous, and the PVC material is environmentally labelled.

DURABILITY

Bolon flooring is durable, and strong and retains its appearance without flattening, making it a perfect solution for high-intensity commercial environments. All collections have a classification of 32 (General commercial) or 33 (Heavy commercial) and come with a 10- or 15-year warranty.

CLEANABILITY

Bolon floors are impervious and resilient against spills. The compact weave prevents dirt and debris from penetrating the surface. Daily cleaning can easily be performed with a vacuum cleaner, brush, mop, and clean water.

INDOOR ENVIRONMENT

Bolon floors are inherently hypoallergenic which ensures better indoor air quality. The floors are also free from hazardous plasticizers and stabilizers.



A CLOSER LOOK AT THE PRODUCT

Bolon flooring is constructed of four layers. One top-weave and three backing layers. The four layers provide the product with its unique qualities.

THE WARP

The warp is the vertical vinyl yarn that together with the horizontal weft forms the weave. Two different kinds of warp can be used in Bolon flooring, extruded or folded.

The extruded warp is profiled and comes in solid monochrome colours. The folded warp comes in solid monochrome or metallic shades.



THE WEFT

We extrude our own Bolon weft yarn at our production plant in Ulricehamn. Each thread is extruded into a mono or co-ex line, each with a polyester core.

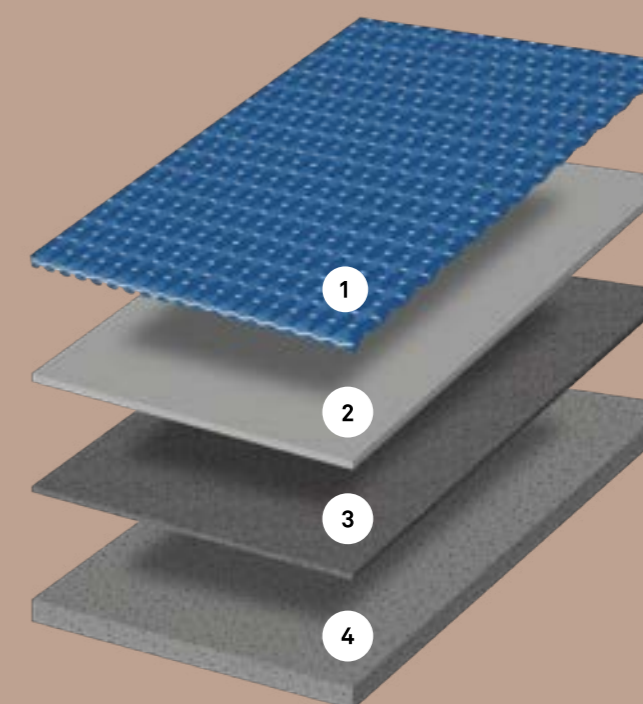
THE WEAVE

The weave layer is formed by vinyl warp and weft threads woven together tightly. The variations of the warp and weft yarn together with the different weaving techniques, and different looms, gives Bolon flooring its vast design possibilities.



LAYERS

1. The weave layer consists of vinyl warp and weft yarns tightly woven together
2. The upper backing layer gives the flooring its robustness
3. The middle backing layer consists of glass fibre giving the flooring dimensional stability
4. The bottom backing layer defines the thickness of the flooring and contains recycled material



SUSTAINABILITY

CIRCULAR INNOVATION IS IN OUR DNA

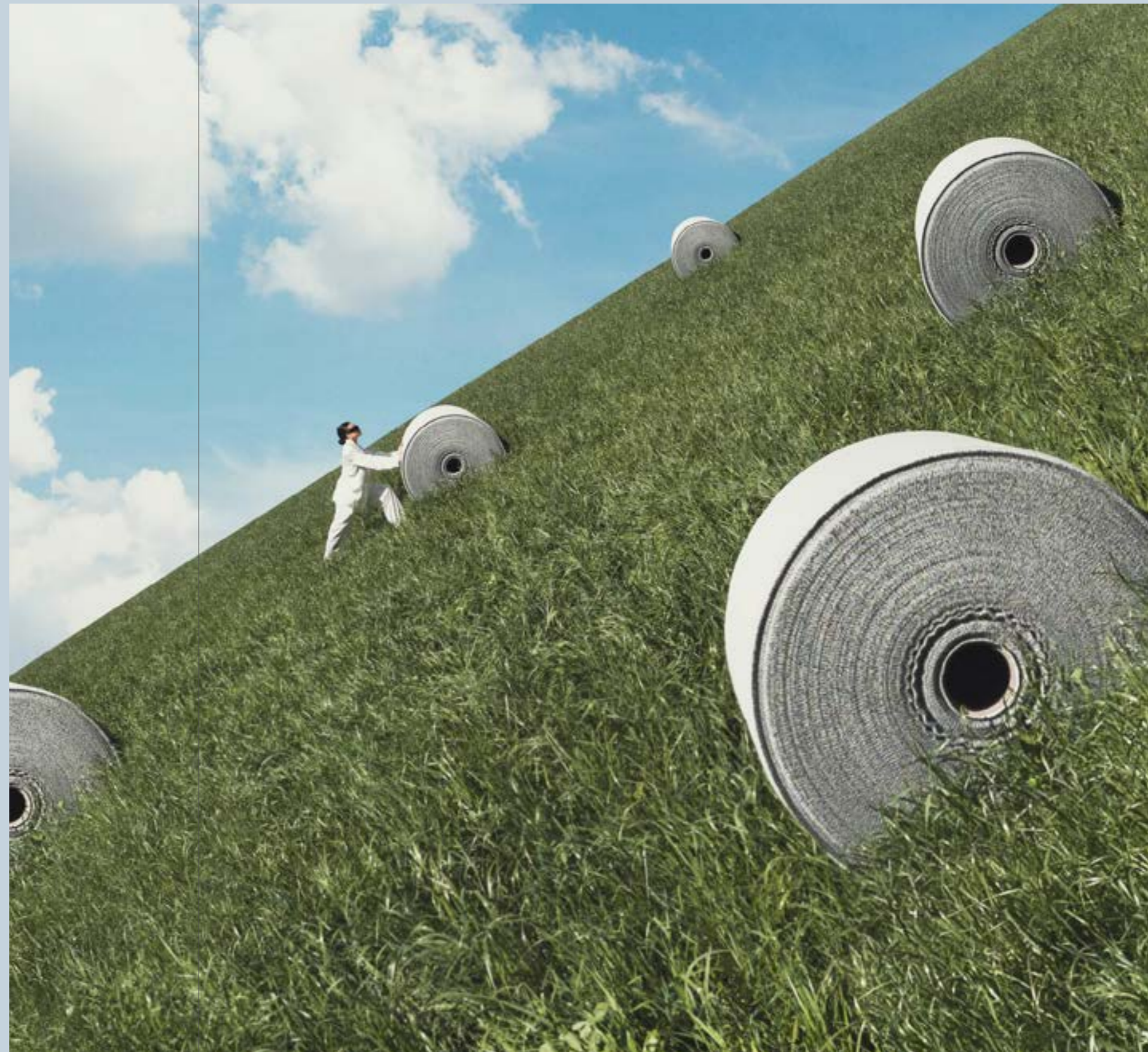
As a business, Bolon has always taken pride in doing things in our own way. As each generation of the company has left its mark on our history, we can look back on decades of development and sustainable innovation with a great sense of achievement.

All our collections contain recycled material – our integrated recycling plant helps us to increase the levels of recycled material year by year. In our production, we only use renewable energy with zero climate footprint. Our additives are non-hazardous, and the PVC material is environmentally labelled.

In 2021, we established a new vision for all future sustainability work. Based on this vision, we set new goals. To achieve these goals, we will work with the following three focus areas: circularity, climate, and chemicals.

OUR PROMISE

By 2028, all the flooring we produce will be 50% circular.
By 2028, we will halve the climate impact of our flooring.



PRODUCTION

All our products are produced in Sweden with low emissions and a closed-loop water cooling system. Our integrated recycling plant gives us a great opportunity to include recycled material in all products and continuously increase the percentage used.

CIRCULARITY

All our products contain at least 22% recycled content, according to ISO 14021. In our acoustic flooring, 90% of the felt layer consists of recycled material.

CLIMATE

We have third-party verified EPDs (Environmental Product Declarations), which provide transparency and comparability of our products' climate impact. Our factory runs on 100% renewable energy making our production climate neutral.

MATERIAL

The materials used in our floors and rugs are 79% fossil-free and consist of chalk, PVC, glass fibre and non-hazardous additives. We only use environmentally labelled PVC.

CHEMICALS AND VOC EMISSIONS

Our products are free from heavy metals and hazardous phthalates and fulfil strict requirements of VOC (Volatile Organic Compound) emissions during use.





ELEMENTS: Flint

DESIGNED FOR THE LONG RUN

The unique layered structure of Bolon flooring provides impressive durability qualities. The top layer is made from Bolon threads, creating the characteristic Bolon look and the flooring's resilience. The backing layers enhance the product's performance, adding stability and improving its imperviousness.

SUITABLE FOR COMMERCIAL ENVIRONMENTS

A Bolon flooring is both durable and resilient, following ISO 10874 standard. Depending on product use, classification is 32 (General commercial) or 33 (Heavy commercial).

LONG SERVICE LIFE

A Bolon flooring retains its appearance without flattening, making it a perfect solution for high-intensity commercial environments. Our products are designed and produced to last throughout their long service lives.

WARRANTY

All flooring collections come with a 10- or 15-year warranty depending on the product.

WATER RESISTANCE

Bolon flooring is water resistant and does not allow water to penetrate. However, it shall not be used as a waterproofing/sealing layer in areas like bathrooms.

FIRE RATING

Bolon flooring complies with the requirements in the European standard EN 13501-1 (fire classification of construction products) and has achieved a rating just below non-combustible material. This classification is called BflS1 and includes both fire and smoke production. Bolon flooring is approved for emergency exit routes in Sweden.

ACOUSTICS

The impact sound insulation varies for different products from 9 dB to 14 dB. With Bolon acoustic flooring, the impact noise reduction is 21–22 dB.

NON-SLIP

CE certification for the floor includes a slip resistance assessment. The lowest value for materials used in public areas is 0.3. Bolon's collections have a slip resistance value of >0.5.

ANTI-STATIC

Bolon flooring does not generate a static charge. Our flooring has been tested and fulfils the requirements of the European Directive EN 1815.





NOW: Copper/ Silver / Titanium

EASY TO CLEAN

One of Bolon flooring's key benefits is its ease of cleaning and maintenance. Thanks to the tightly woven vinyl structure and the layers of solid backing, the flooring is impervious to liquids and resilient enough for almost any spill or mess.

ECO-FRIENDLY CLEANING

Most of the cleaning can be accomplished with a vacuum cleaner and scrubbing brush. During Bolon flooring's long product lifecycle, 99% of the cleaning can be accomplished with clean water.

HYPOALLERGENIC

Bolon flooring is impervious to liquids and has no exposed fibres where dust, dirt, or debris can hide. The result is flooring with less risk for mold spores to thrive. Our flooring is recommended by the Norwegian Asthma and Allergy Association as they contribute positively to indoor air quality.

CLEANING METHODS

We recommend vacuum cleaning for daily maintenance. For larger areas, mechanical cleaning with a roller brush or ORBOT method is recommended at the frequency required by the specific environment.

DISINFECTION

If needed, the flooring can be disinfected. If so, make sure to rinse away all chemicals to avoid any damage to the floor.

See the Support page on bolon.com for more information



STAIN REMOVAL

With Bolon flooring, stain removal is straight forward. Most of the times, all you need is warm water, a scrubbing brush and a dry cloth. It is best if the stains are treated right away. Before you use a stain remover, make sure it can be used on vinyl flooring.

STAIN

CLEAN WITH

Chocolate, fat, juice, cream, coffee, beer, wine

Hot water + all-purpose cleaner

Asphalt, oil, shoe polish, chalk, ink

Chemically pure petrol

Water-based glue

Hot water

Solvent-based glue

Chemically pure petrol

Marks from shoes

Rub with dry cloth cloth

Chewing gum

Hot water, steam or freeze spray

See our instructional films about cleaning on bolon.com



CERTIFICATIONS & DECLARATIONS

Our products and processes have been awarded stringent environmental and health certifications for buildings. These third-party verified certifications are one way of demonstrating and communicating environmental quality. Our declarations provide transparency and availability for everyone. Because Bolon operates in many different markets, we have many different certificates and declarations.

FOR FULL PRODUCT SPECIFICATIONS AND CERTIFICATIONS:



OUR REFERENCE PROJECTS

Using Bolon flooring when creating interiors opens design possibilities that are both beautiful and functional. With a broad palette of shapes, colours, and expressions, only the imagination sets the limitations. We are very proud of all projects worldwide where our design floorings provide a foundation for great interior experiences. The floorings are used in a wide range of commercial interiors such as **offices, hotels, education, retail venues, healthcare,** and **other** facilities such as museums and restaurants.

NOW: Champagne / Silver / ETHNIC: Kaise / BOTANIC: Osier



OBJECT: DTI GROUP

LOCATION: WIJK
EN AALBURG,
NETHERLANDS

SIZE: 590 M2

ARCHITECT: VEVS,
ROB VAN SPRANG +
MARTIJN D'HERRIPON

FLOORING: NOW:
Champagne, Silver /
ETHNIC: Kaise /
BOTANIC: Osier



OBJECT: J.H. KUNZ
BAUTREUHAND AG

LOCATION: ZURICH,
SWITZERLAND

SIZE: 424 M2

ARCHITECT: SUSANNE
FRITZ ARCHITEKTEN

IMAGES: PIERRE
KELLENBERGER

FLOORING:
NOW: Champagne /
ETHNIC: Kaise



OBJECT: KIMPTON DA
AN HOTEL

LOCATION: TAIPEI,
TAIWAN

SIZE: 2500 M2

ARCHITECT: NERI & HU

FLOORING: BOLON BY
JEAN NOUVEL: NO.03



OBJECT: EDUCITY

LOCATION: TURKU,
FINLAND

SIZE: 4000 M2

ARCHITECT: SIGGE
ARCHITECTS TURKU

FLOORING:
ELEMENTS: Wool /
ARTISAN: Slate / Quartz

ELEMENTS: Wool / ARTISAN: Slate / Quartz

RETAIL



OBJECT: DANIEL WELLINGTON

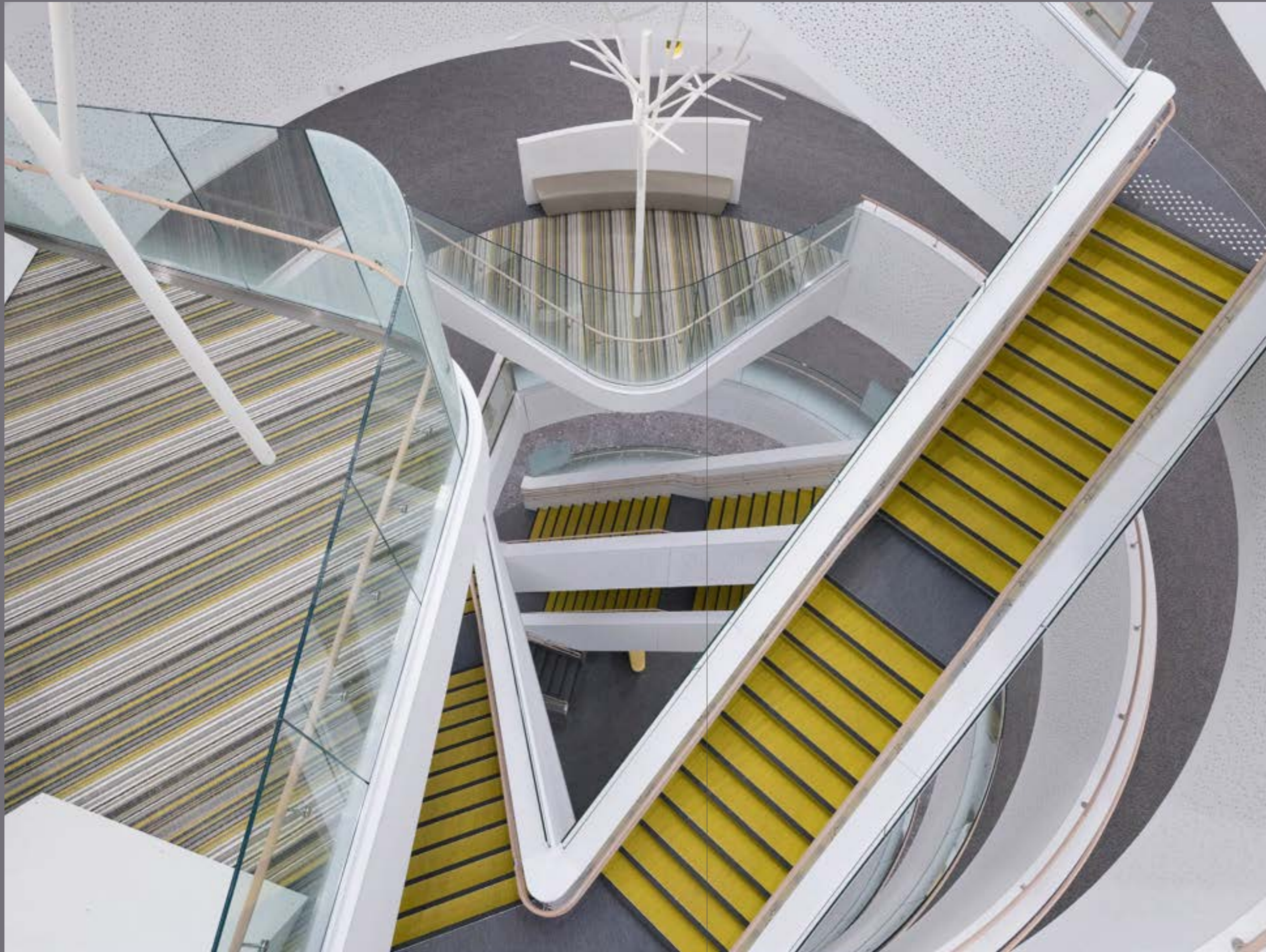
LOCATION: LOS ANGELES, UNITED STATES

SIZE: 100 M2

ARCHITECT: INHOUSE

FLOORING: CREATE: Fabrico

CREATE: Fabrico



OBJECT: CHIREC DELTA HOSPITAL

LOCATION: BRYSEL, BELGIUM

SIZE: 4000 M2

ARCHITECT: ASSAR ARCHITECTS (BRUSSELS/BELGIUM)

FLOORING: Customised



OBJECT: VIDEGÅRD
RESTAURANT

LOCATION: STOCKHOLM,
SWEDEN

SIZE: 250 M2

FLOORING:
ARTISAN: Quartz

ARTISAN: Quartz

HEJ, CONTACT US!

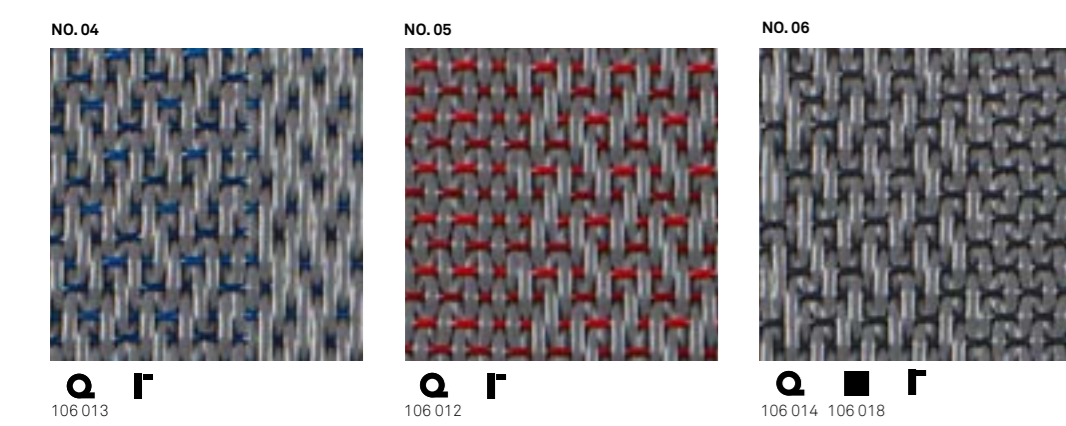
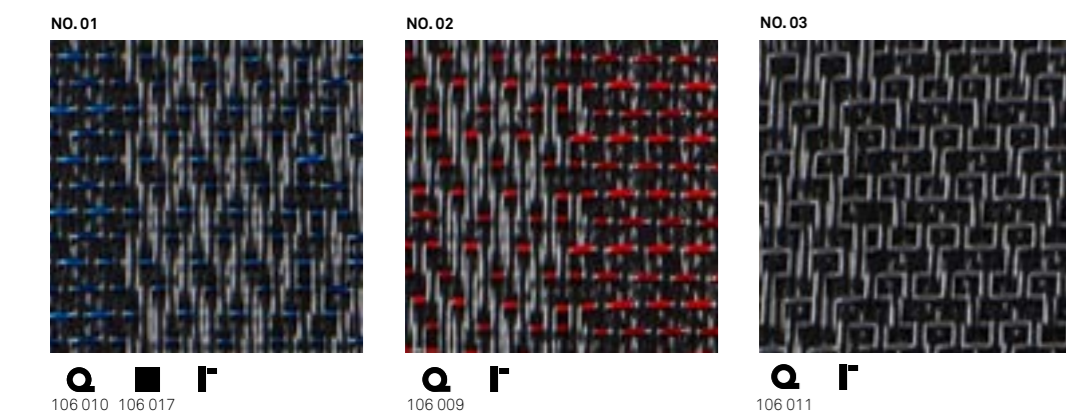
We are based in Sweden – but our reach and our products are truly global. With representatives across five continents, help is never far away.

To ensure you receive the best possible support, we work with skilled local distributors. Our representatives are located in many countries and in certain areas we also stock products. As well as providing sales assistance, many of our local partners can offer integrated solutions for installation and maintenance.

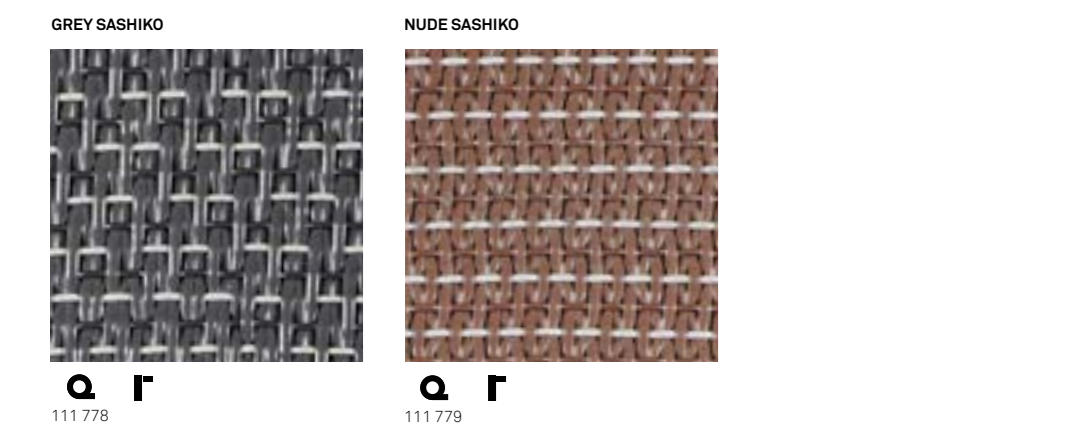
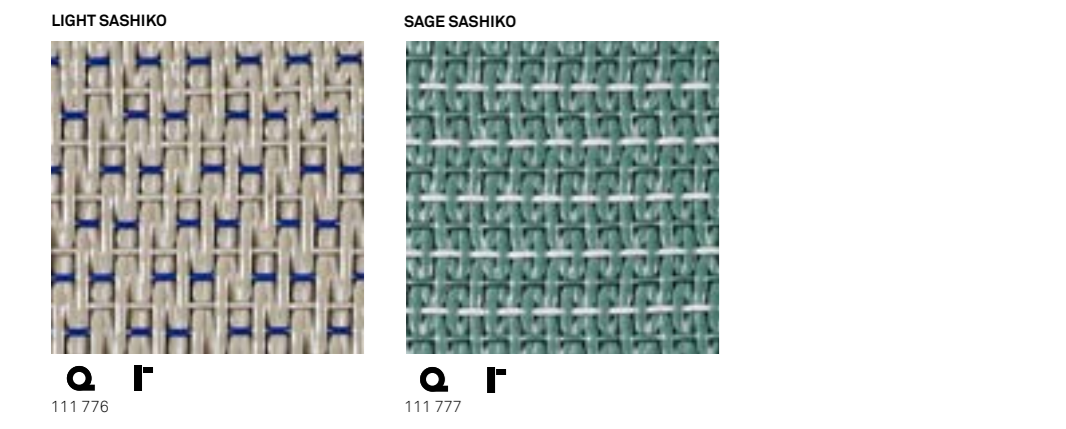
Please visit [bolon.com](https://www.bolon.com) for more product information or to find your local Bolon representative.

HEAVY COMMERCIAL USE

BOLON BY JEAN NOUVEL

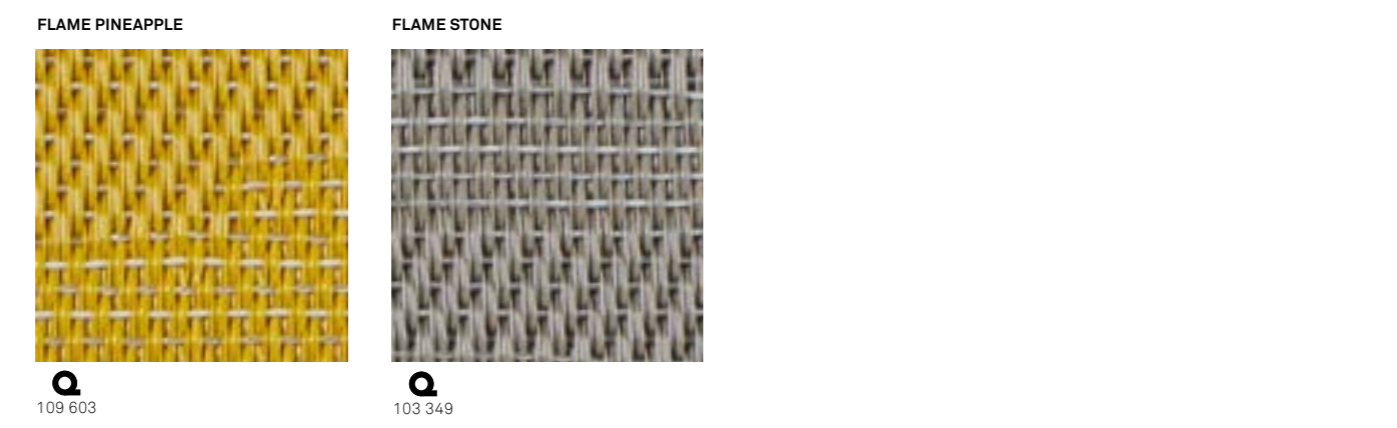
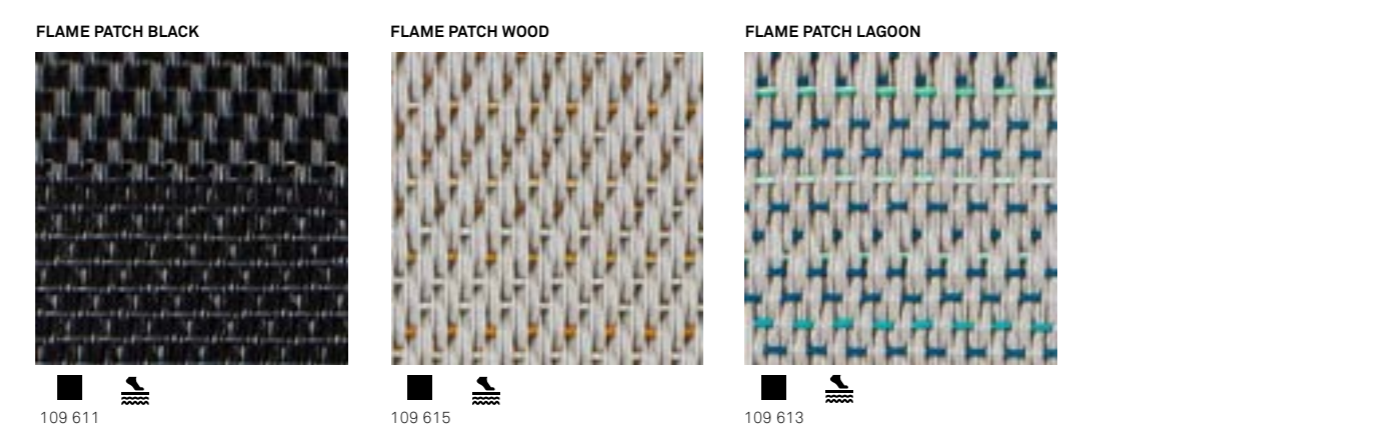
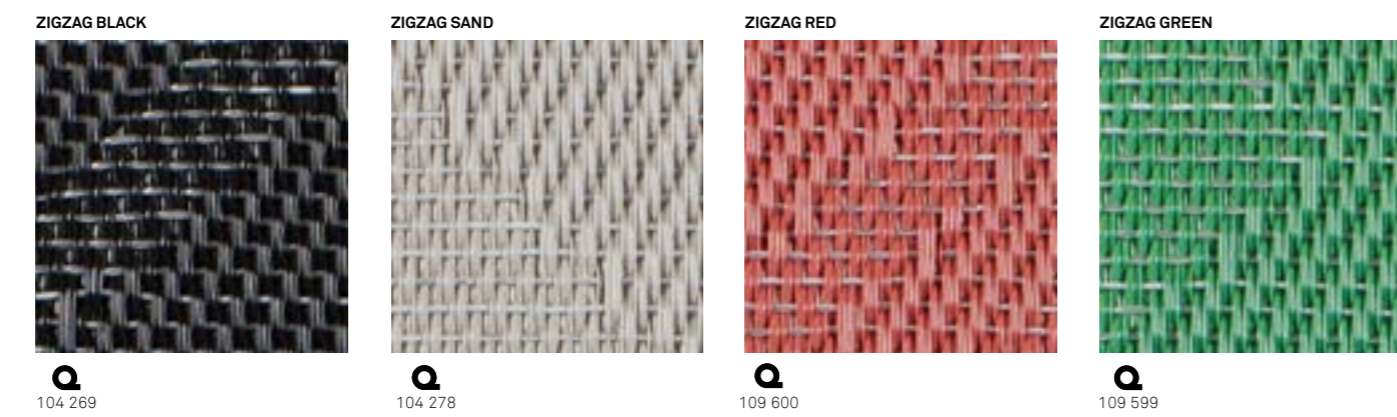


BOLON BY PATRICIA URQUIOLA



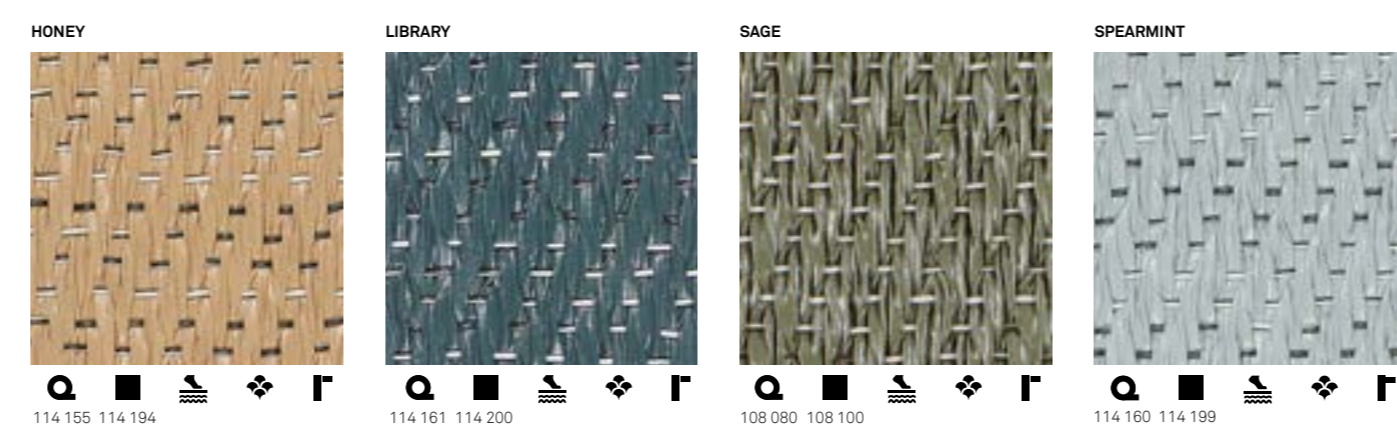
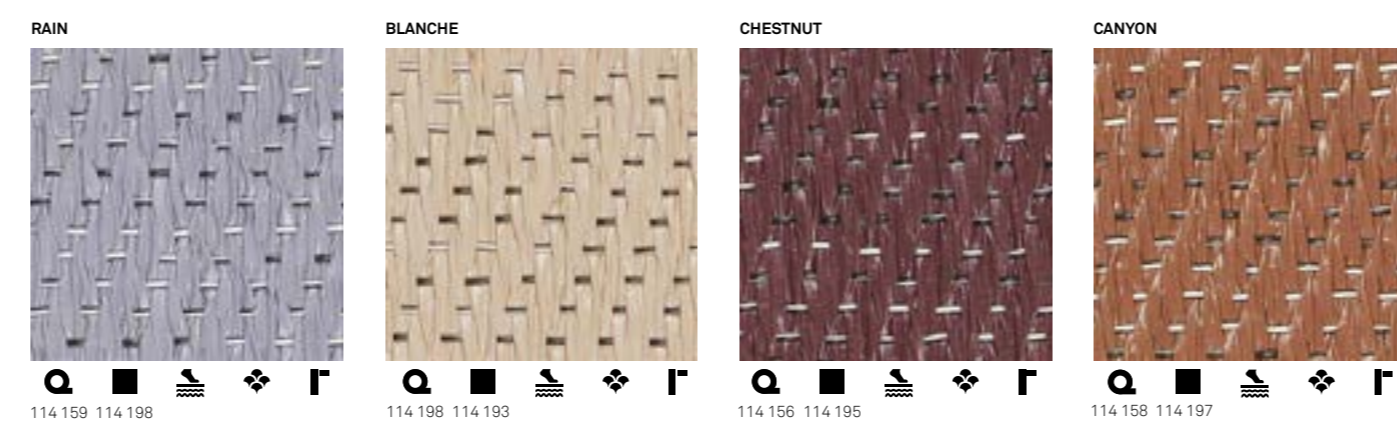
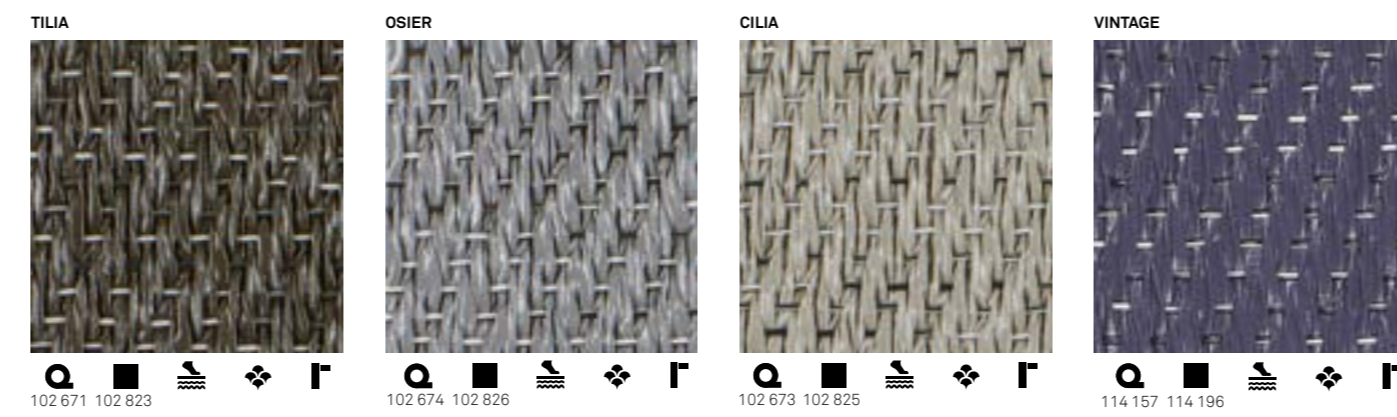
HEAVY COMMERCIAL USE

MISSONI HOME

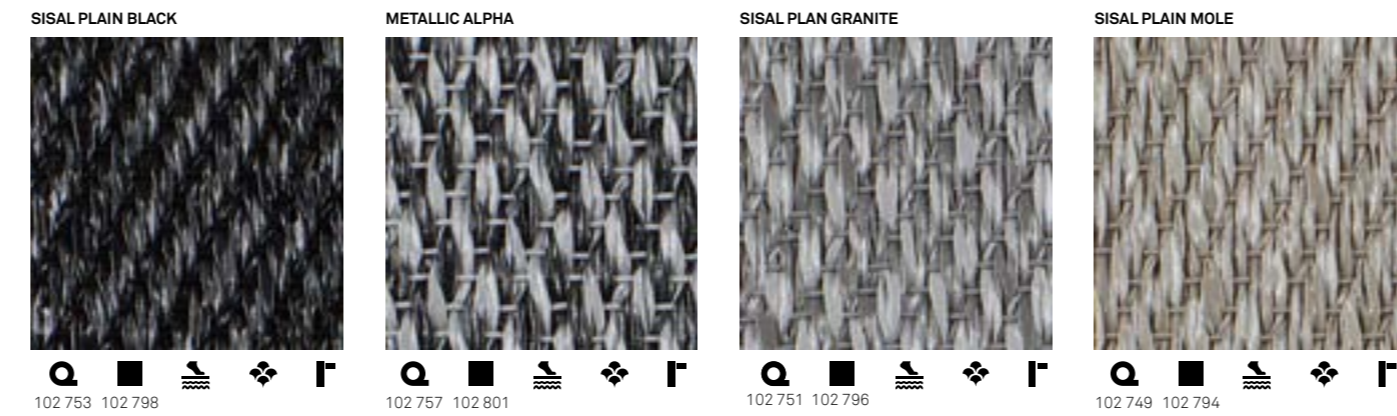


GENERAL COMMERCIAL USE

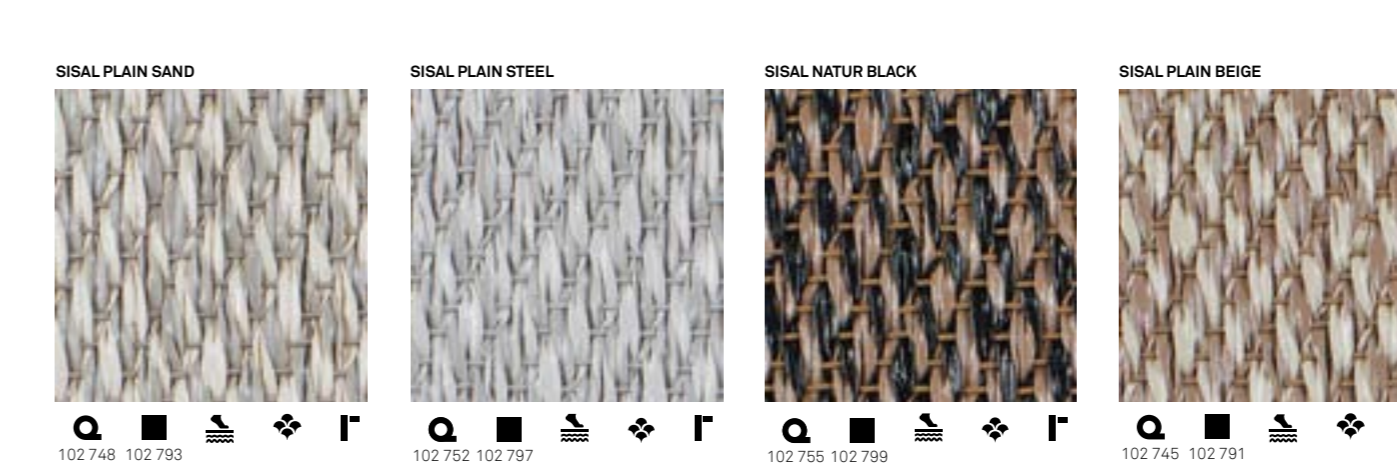
BOTANIC



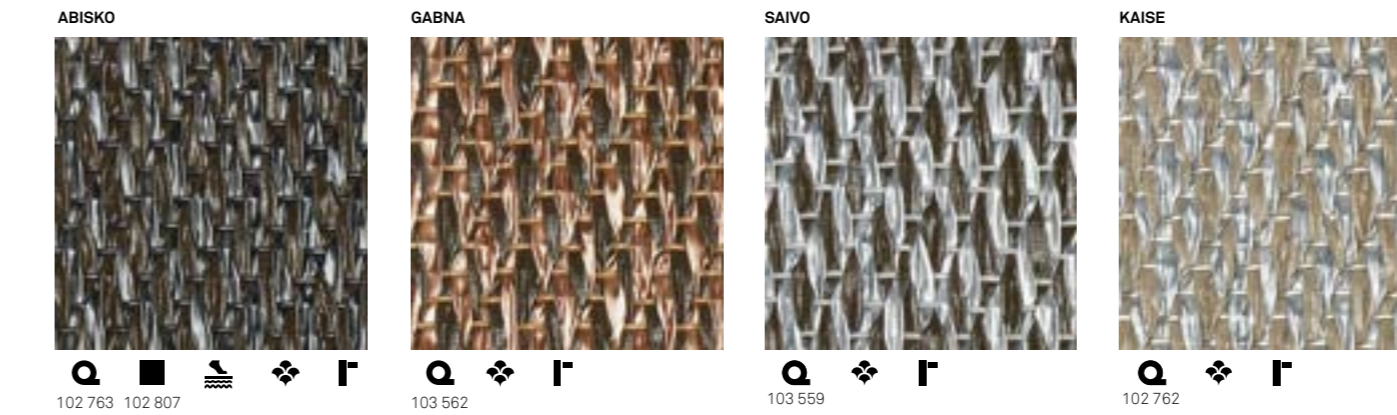
BKB



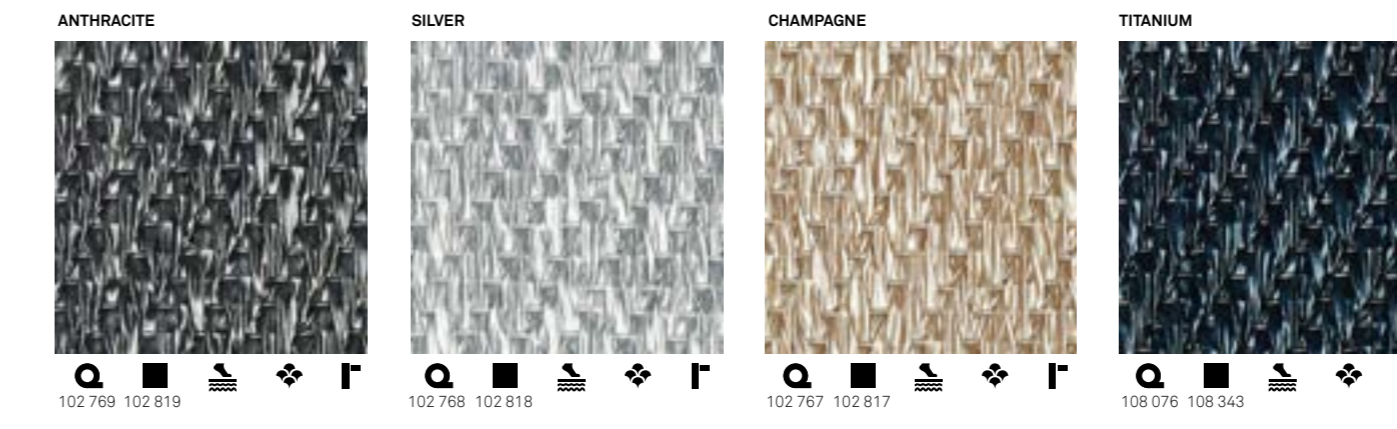
GENERAL COMMERCIAL USE



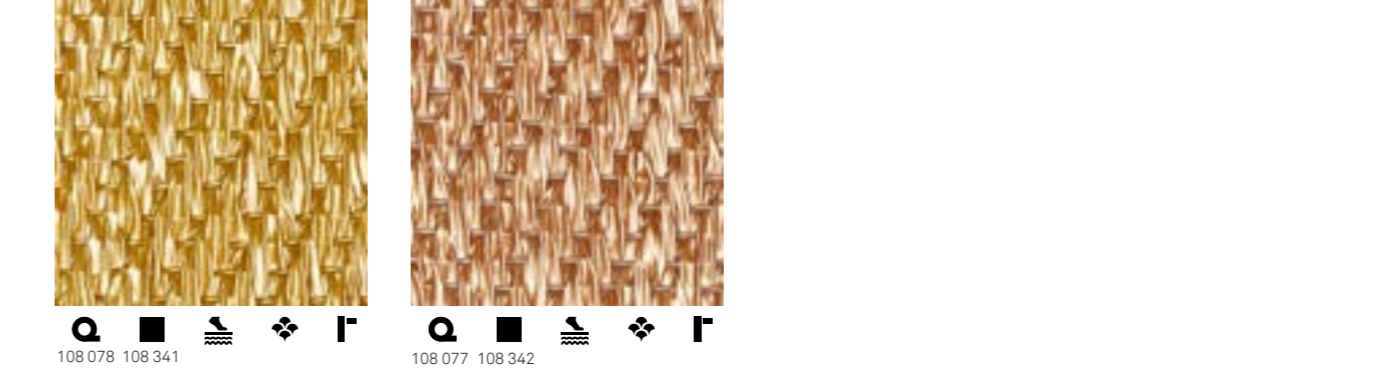
ETHNIC



NOW



BRASS



PRODUCT SPECIFICATION

CLASSIFICATION 33

	ROLLS	TILES	ACOUSTIC
WEIGHT	ISO 8543	2,9 - 3,1 kg/m ²	3,5 - 3,7 kg/m ²
THICKNESS	ISO 1765	2,3 - 2,5 mm	4,9 - 5,1 mm
ROLL DIMENSION (width - length)	EN 426	2 m - 25 m	
TILE DIMENSION PLANK DIMENSION	EN 994	50 x 50 cm 20 pcs/box, 5 m ² 66,7 x 22,2 cm, 27 pcs/box, 4 m ²	12 pcs/box, 3 m ²
IMPACT SOUND INSULATION	EN ISO 10140	9,12 dB	21 dB
AIRBORNE SOUND ABSORPTION	EN ISO 354	0,05	0,15
CASTOR CHAIR	EN 985	Intensive use	
BODY VOLTAGE	EN 1815	Fulfilled	
THERMAL RESISTANCE	ISO 8302	Suitable for underfloor heating	
COLOUR FASTNESS TO LIGHT	EN ISO 105-B02	≥7	
DIMENSION STABILITY	ISO 2551 / EN 986	Fulfilled	
ANTI SLIP PROPERTY	DIN 51130	R9	
FRICTION	EN 13893	> 0,3	
REACTION TO FIRE	EN 13501-1	B ₁ -s1	
CRITICAL RADIANT FLUX	ASTM E 648	Class 1	
SMOKE DENSITY	ASTM E 662	< 450	

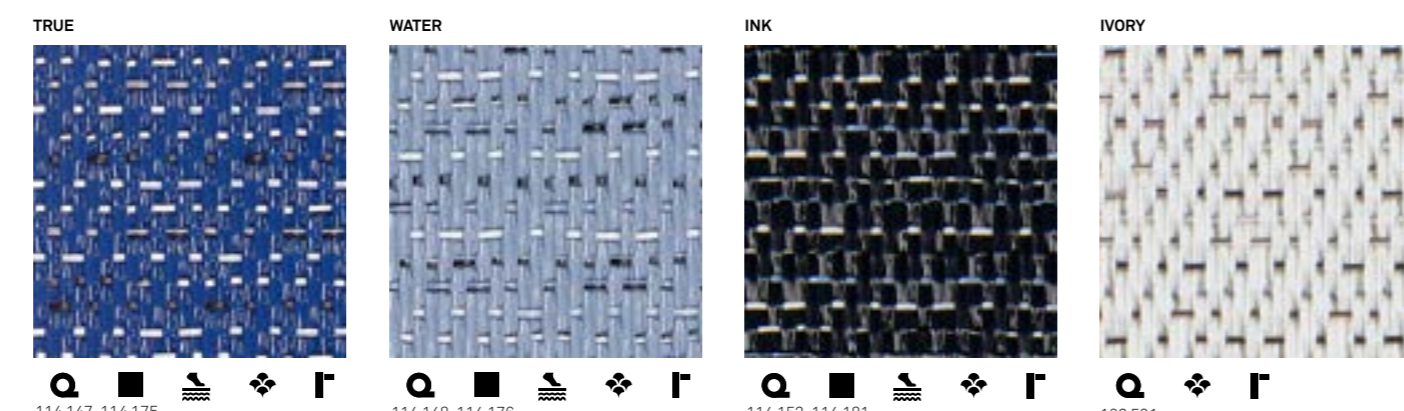
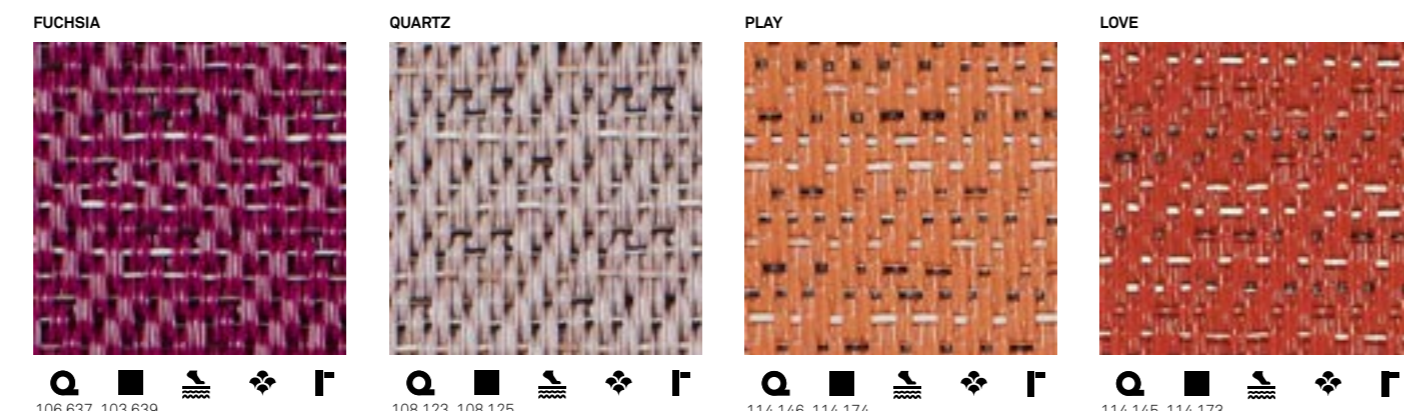
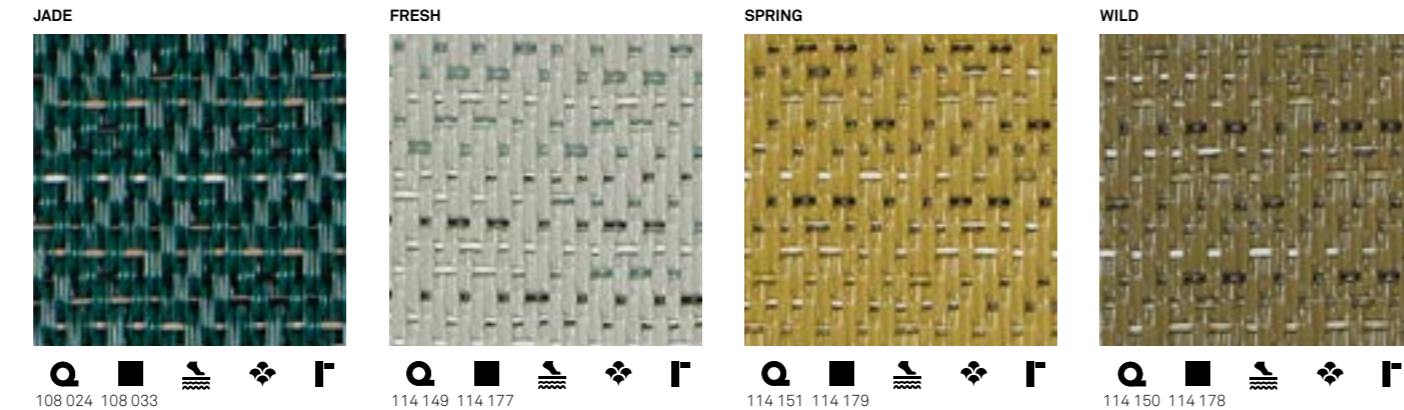
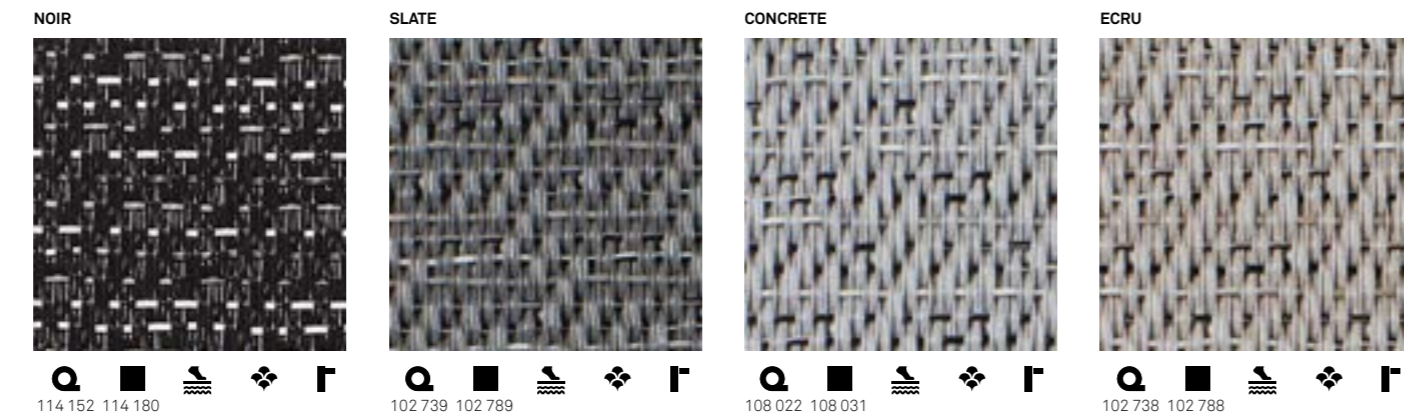
CLASSIFICATION 32

	ROLLS	TILES	ACOUSTIC
WEIGHT	ISO 8543	2,8 - 2,9 kg/m ²	3,5 - 3,6 kg/m ²
THICKNESS	ISO 1765	2,3 mm	4,9 mm
ROLL DIMENSION	EN 426	2 m - 25 m	
TILE DIMENSION	EN 994	50 x 50 cm 20 pcs/box, 5 m ²	12 pcs/box, 3 m ²
IMPACT SOUND INSULATION	EN ISO 10140	12 dB	22 dB
AIRBORNE SOUND ABSORPTION	EN ISO 354	0,05	0,15
CASTOR CHAIR	EN 985	Intensive use	
BODY VOLTAGE	EN 1815	Fulfilled	
THERMAL RESISTANCE	ISO 8302	Suitable for underfloor heating	
COLOUR FASTNESS TO LIGHT	EN ISO 105-B02	≥7	
DIMENSION STABILITY	ISO 2551 / EN 986	Fulfilled	
ANTI SLIP PROPERTY	DIN 51130	R10	
FRICTION	EN 13893	> 0,3	
REACTION TO FIRE	EN 13501-1	B ₁ -s1	
CRITICAL RADIANT FLUX	ASTM E 648	Class 1	
SMOKE DENSITY	ASTM E 662	< 450	

Visit bolon.com for inspiration, technical specifications, sample requests and more.

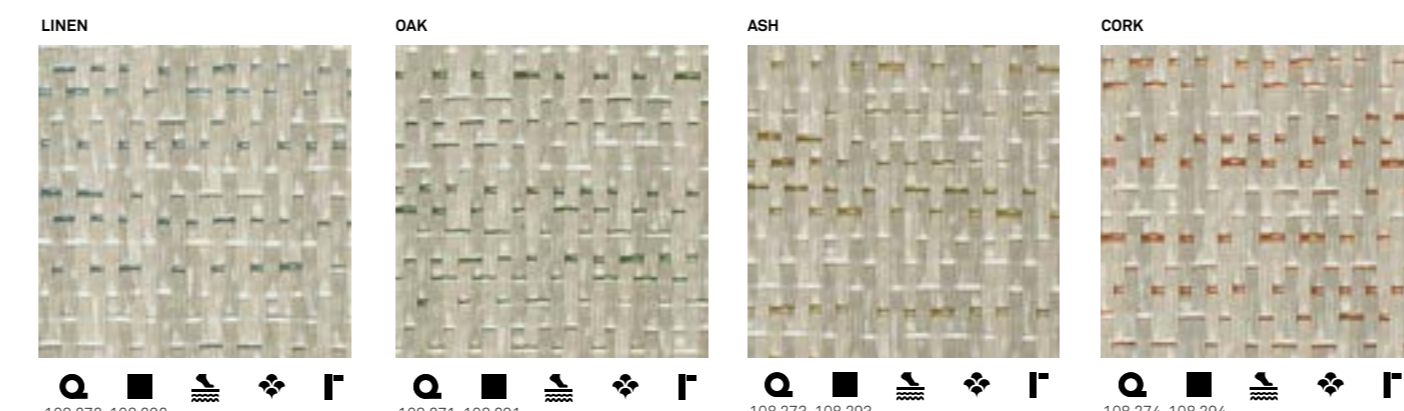
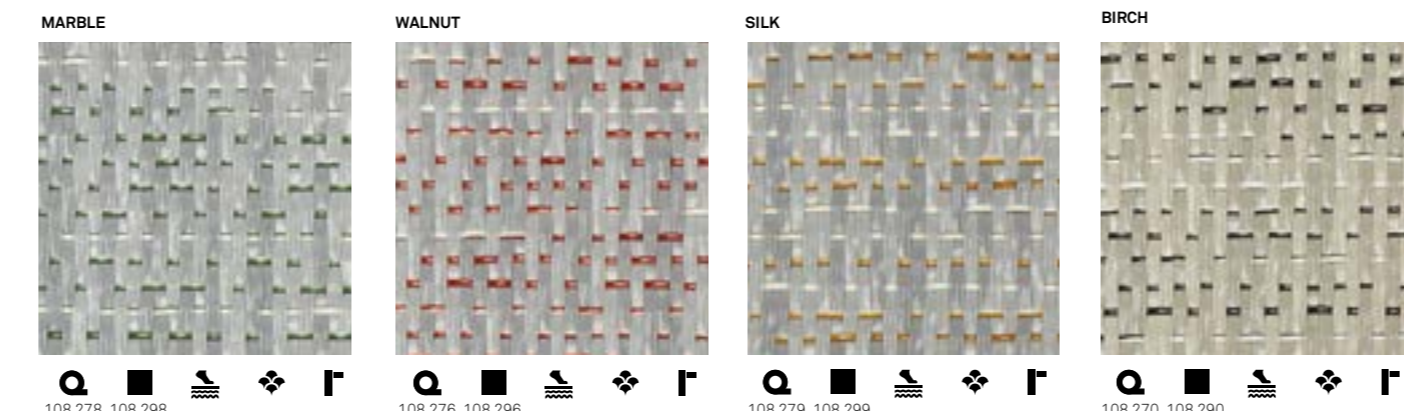
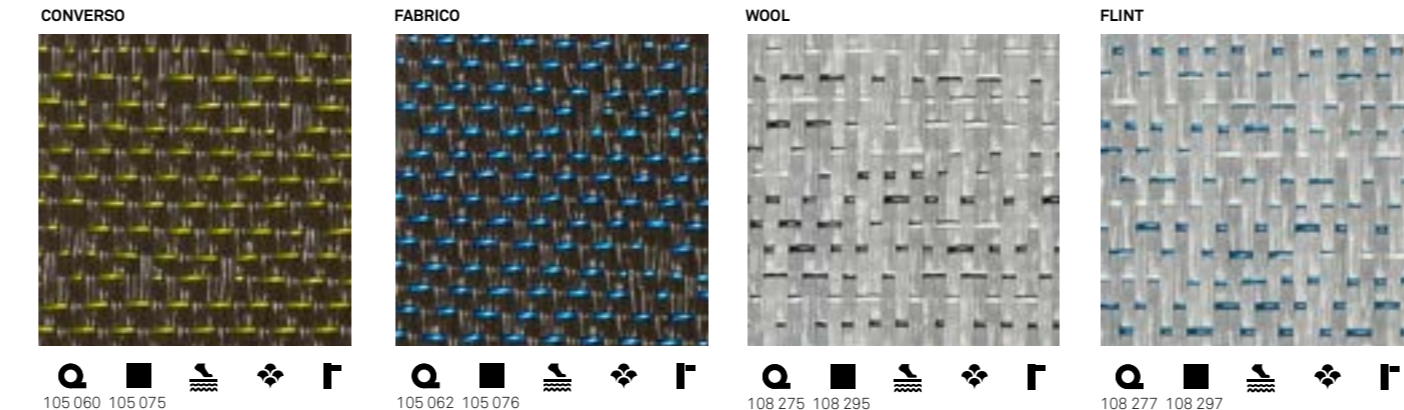
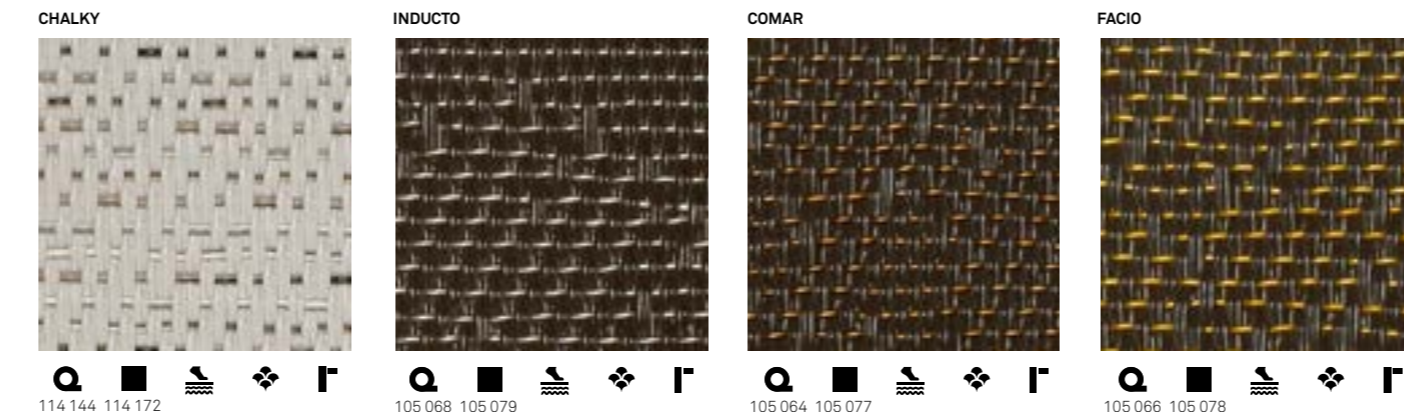
HEAVY COMMERCIAL USE

ARTISAN



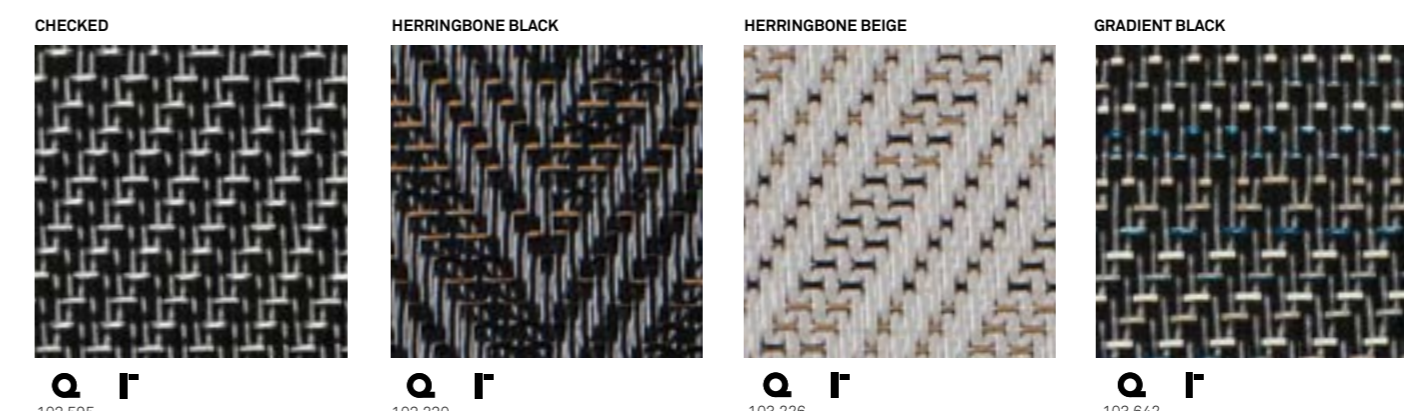
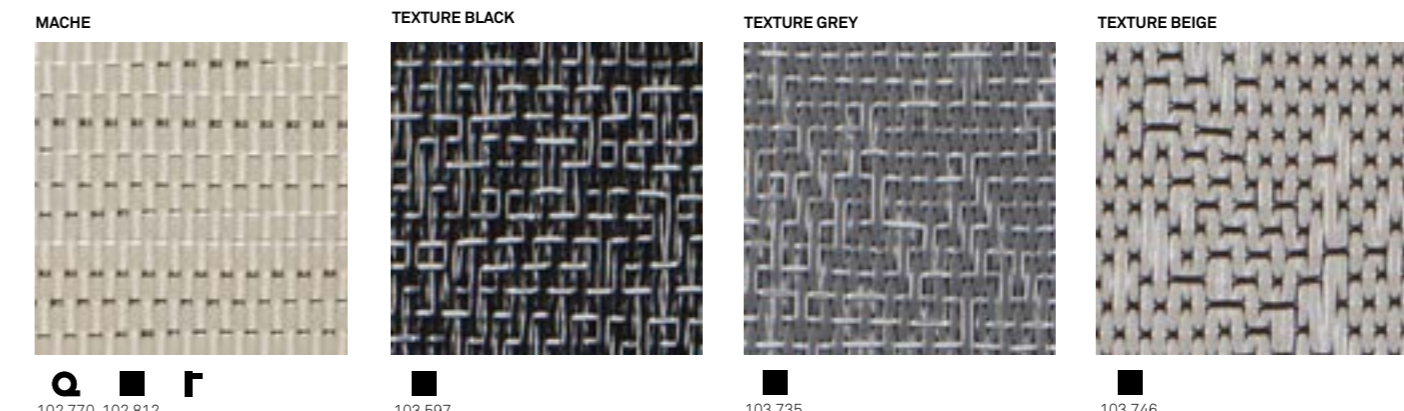
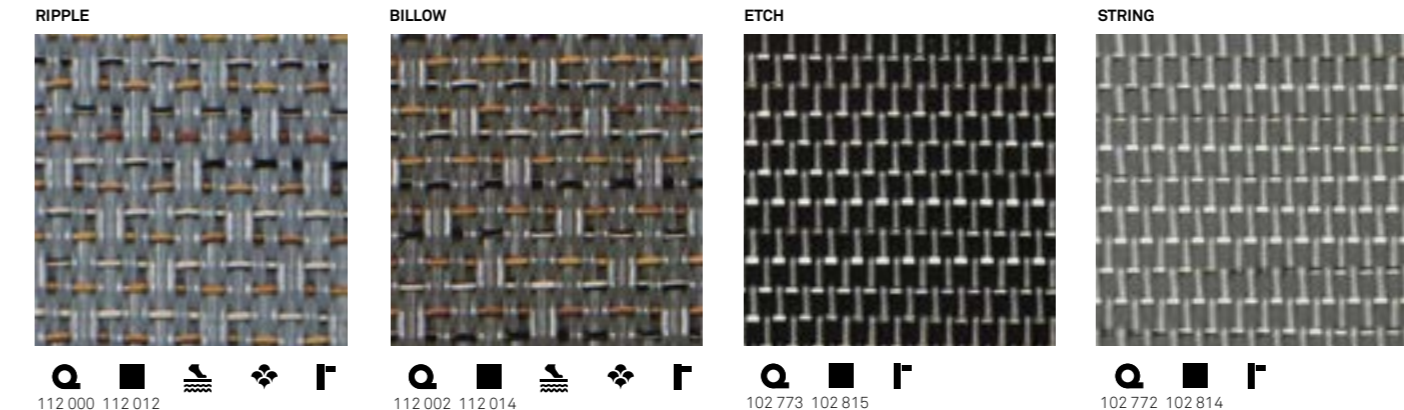
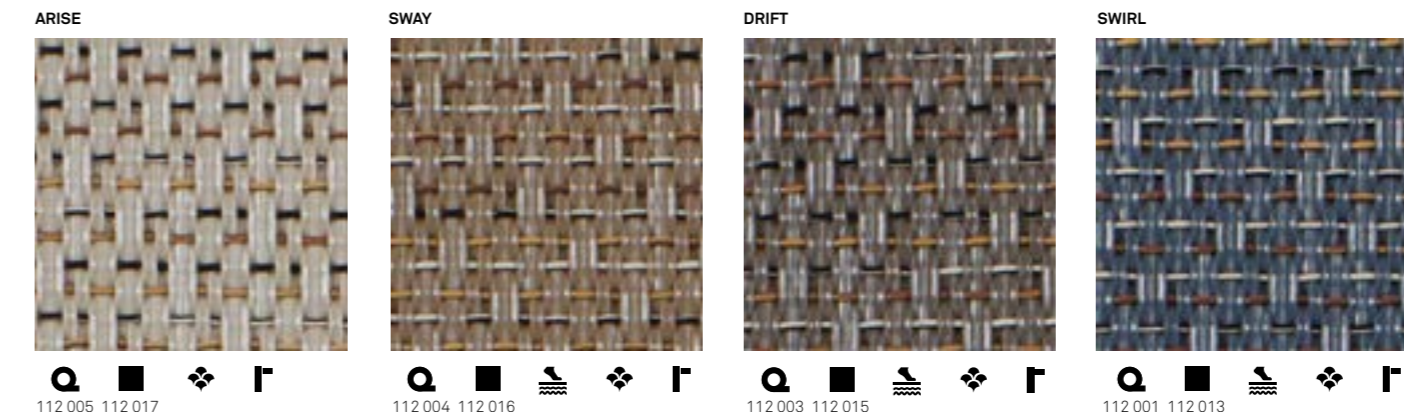
HEAVY COMMERCIAL USE

CREATE



HEAVY COMMERCIAL USE

EMERGE



HEAVY COMMERCIAL USE

SILENCE

