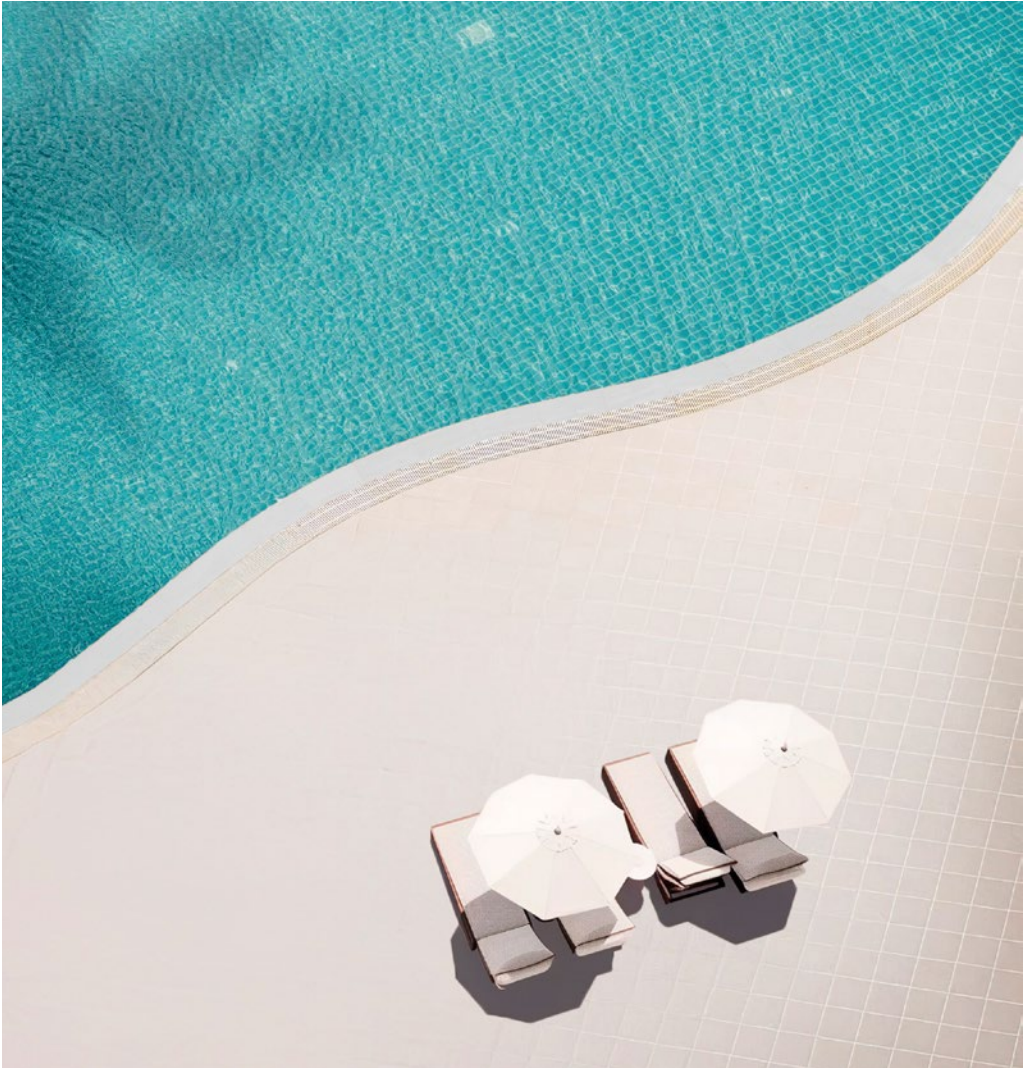


# (agora)<sup>®</sup> PRO



*Professional*

**(agora)<sup>®</sup>PRO**  
EXPERIENCE FABRICS



## Más que experiencia

*Impulsa tus proyectos profesionales con la colección Agora® PRO. Diseñada para aplicaciones especializadas en mobiliario, náutica, parasoles y arquitectura, nuestra gama abarca soluciones para los entornos más exigentes.*

## Beyond Experience

Elevate your professional projects with our Agora® PRO collection. Designed for specialist applications in furniture and nautical design, parasols, and architectural projects, our extensive range is suitable for a variety of demanding environments.

Enhance your projects with this exclusive selection of fabrics and materials, which not only contribute to your overall design scheme but also offer essential qualities such as durability, stain resistance, and ease of maintenance, ensuring outstanding performance in every application.

*Descubre una selección exclusiva de tejidos y materiales que aportan valor al diseño y, al mismo tiempo, garantizan características clave como durabilidad, resistencia a las manchas y fácil mantenimiento, asegurando el mejor resultado en cada aplicación.*



**Argos &  
Atlantis**



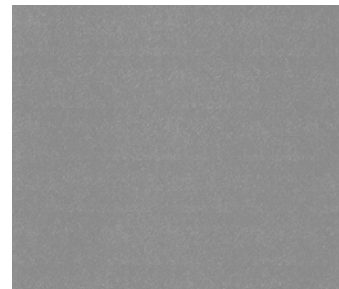
**Seatech  
Collection**



**Compact &  
Compact Special**

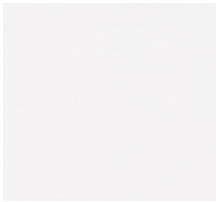


**Belt &  
Rope**



**Cover &  
Cover Pro**

*Shade that protects,  
quality that lasts.*



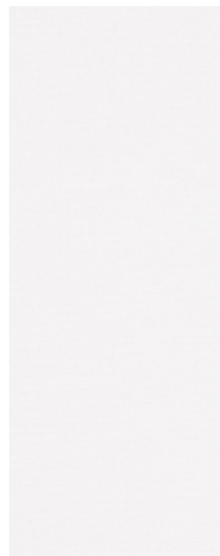
Compact Special Blanco  
**3655**

Protection and resistance in every shade: ideal for umbrellas and architectural structures.

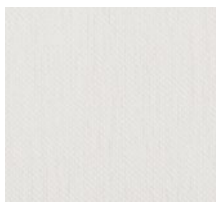
*Protección y resistencia en cada sombra: ideales para sombrillas y estructuras arquitectónicas.*

Durable, easy to clean and dimensionally stable for any application

*Duradero, fácil de limpiar y con estabilidad dimensional para cualquier aplicación*



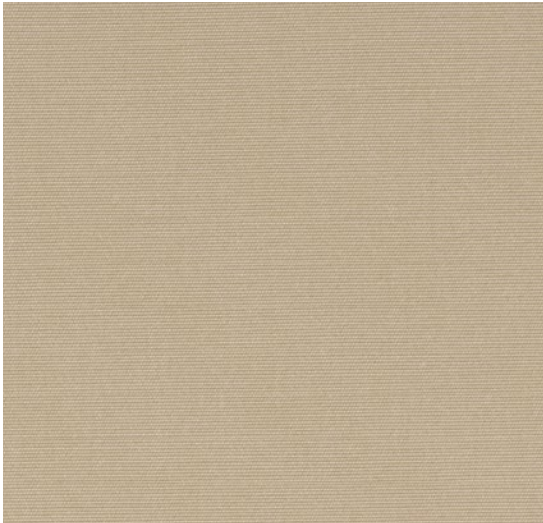
Compact Blanco  
**3654**



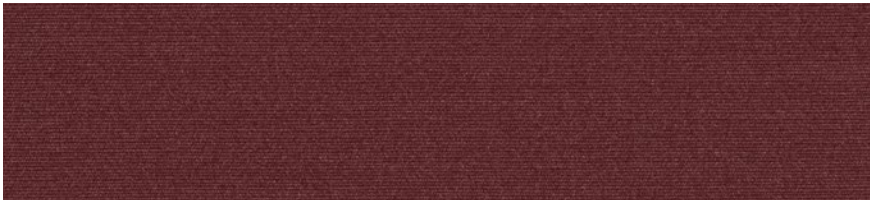
Argos Whisper  
**20016**



Compact Marfil  
**3679**



Compact Special Avena  
**3681**



Compact Special Granate  
**3674**

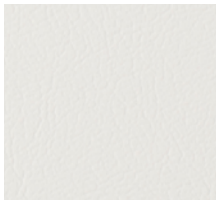




*Built to endure,  
crafted for comfort.*

Designed to perform in the most demanding environments: comfort and elegance for seats and nautical furniture.

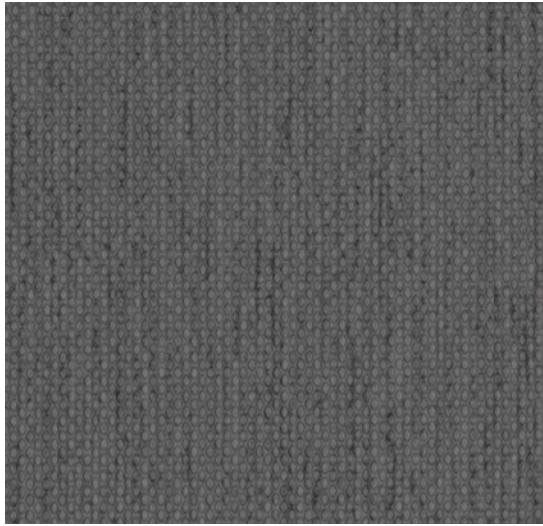
*Diseñados para durar en los entornos más exigentes: confort y elegancia para asientos y muebles náuticos.*



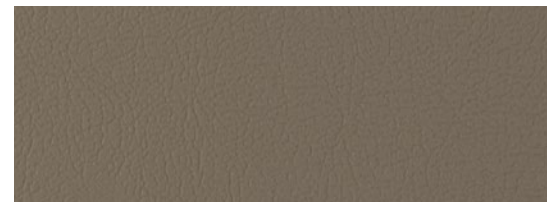
Atlantis Optik  
20007



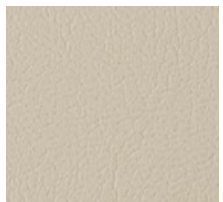
Argos Silver  
20027



Argos Basalto  
20015



Atlantis Fossil  
20012



Atlantis Bone  
20010



Atlantis Off-White  
**20005**



Atlantis Noir  
**20009**



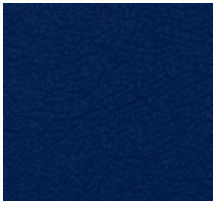
Argos Limestone  
**20021**



Argos Sand  
**20026**




Argos Admiral  
**20014**



Atlantis Royal Blue  
**20002**



A close-up photograph of a light-colored, textured fabric surface covered with numerous water droplets of various sizes. The droplets are more prominent in the foreground and become smaller and more numerous towards the background. The fabric has a fine, woven texture. The background is a solid, vibrant teal color.

Water-repellent  
resistant to stains  
mildew and UV rays

*Hidrófuga  
antimanchas, antimoho  
y con resistencia frente  
a los rayos UV*

*Guard what you  
treasure most.*



Cover Pro Azul Real  
**6926**

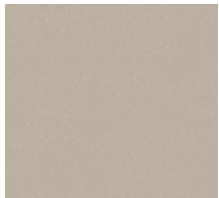
Durable and  
functional  
protection  
for extreme  
conditions.

*Protección  
resistente y  
funcional para  
condiciones  
extremas*

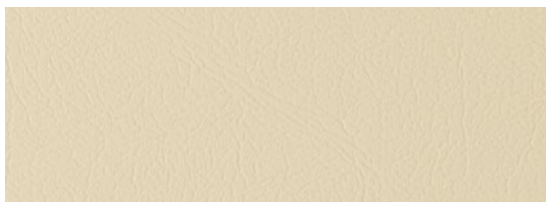




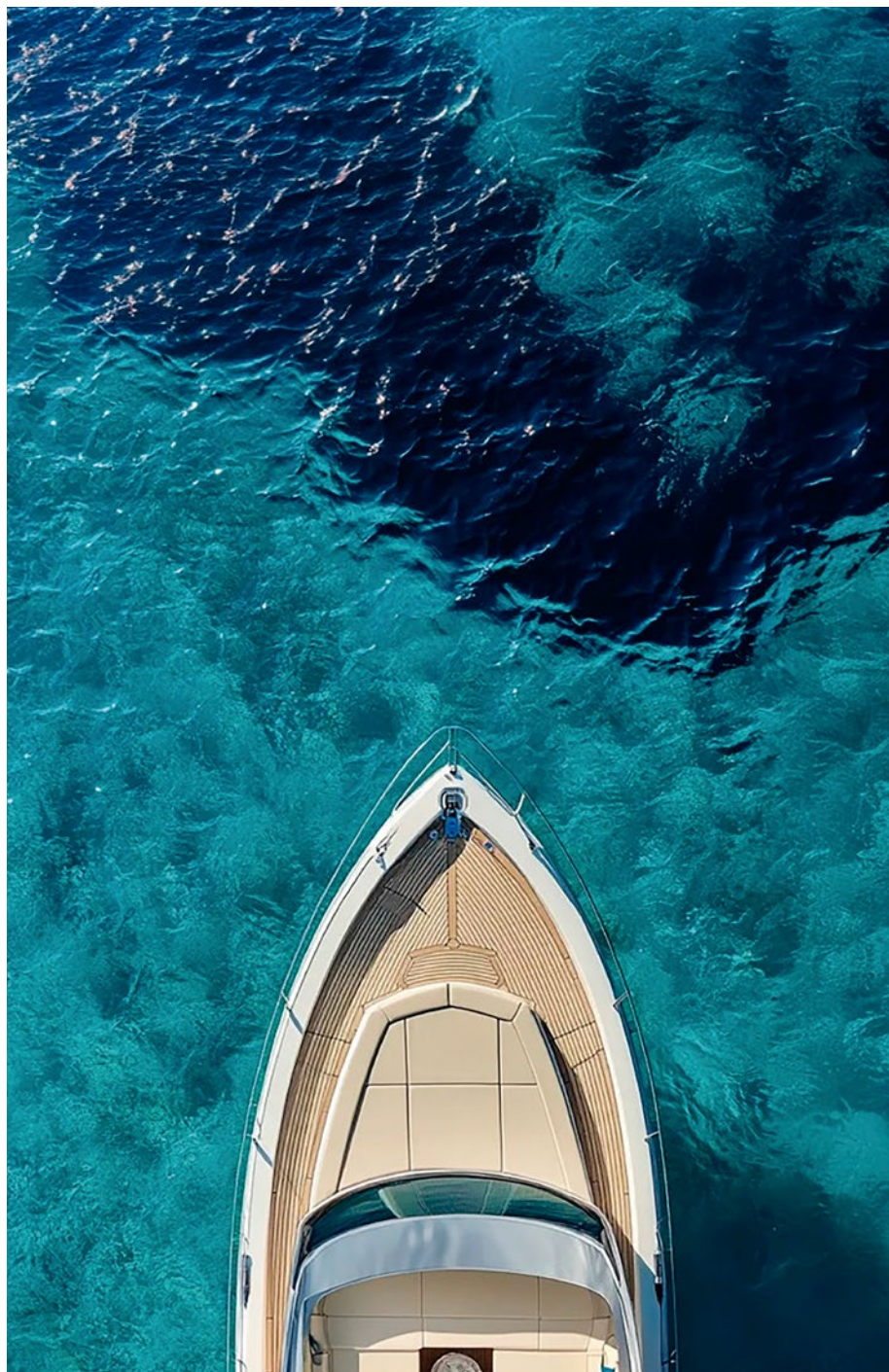
Cover Silver  
RAL 7047  
**6707**



Cover Pro Avena  
**6922**



Atlantis Cream  
**2003**





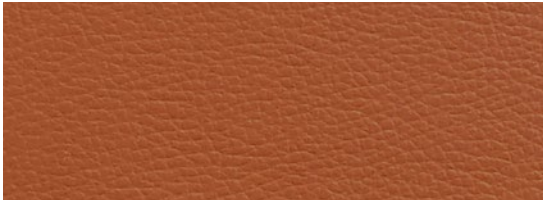
*Designed for versatility  
and reliability.*

A practical and versatile range of technical fabrics, ideal for nautical use, hospitality, and outdoor spaces.

*Una gama práctica y versátil de tejidos técnicos, ideal para náutica, hostelería y espacios exteriores.*



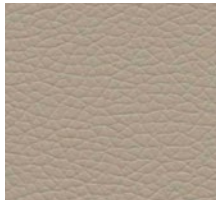
Charm Marine  
20927



Charm Chestnut  
**20920**



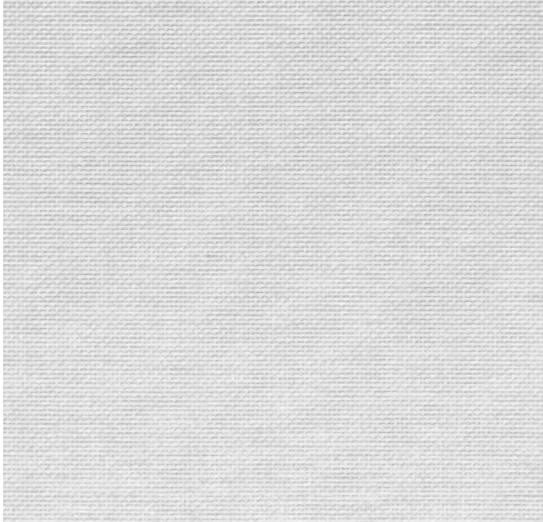
Pier Green  
**20906**



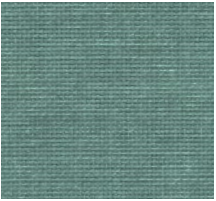
Silmare Sand  
**20897**



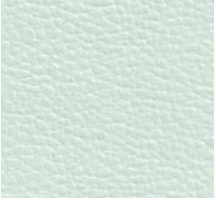
Charm Chocolate  
**20922**



Pier White  
**20899**

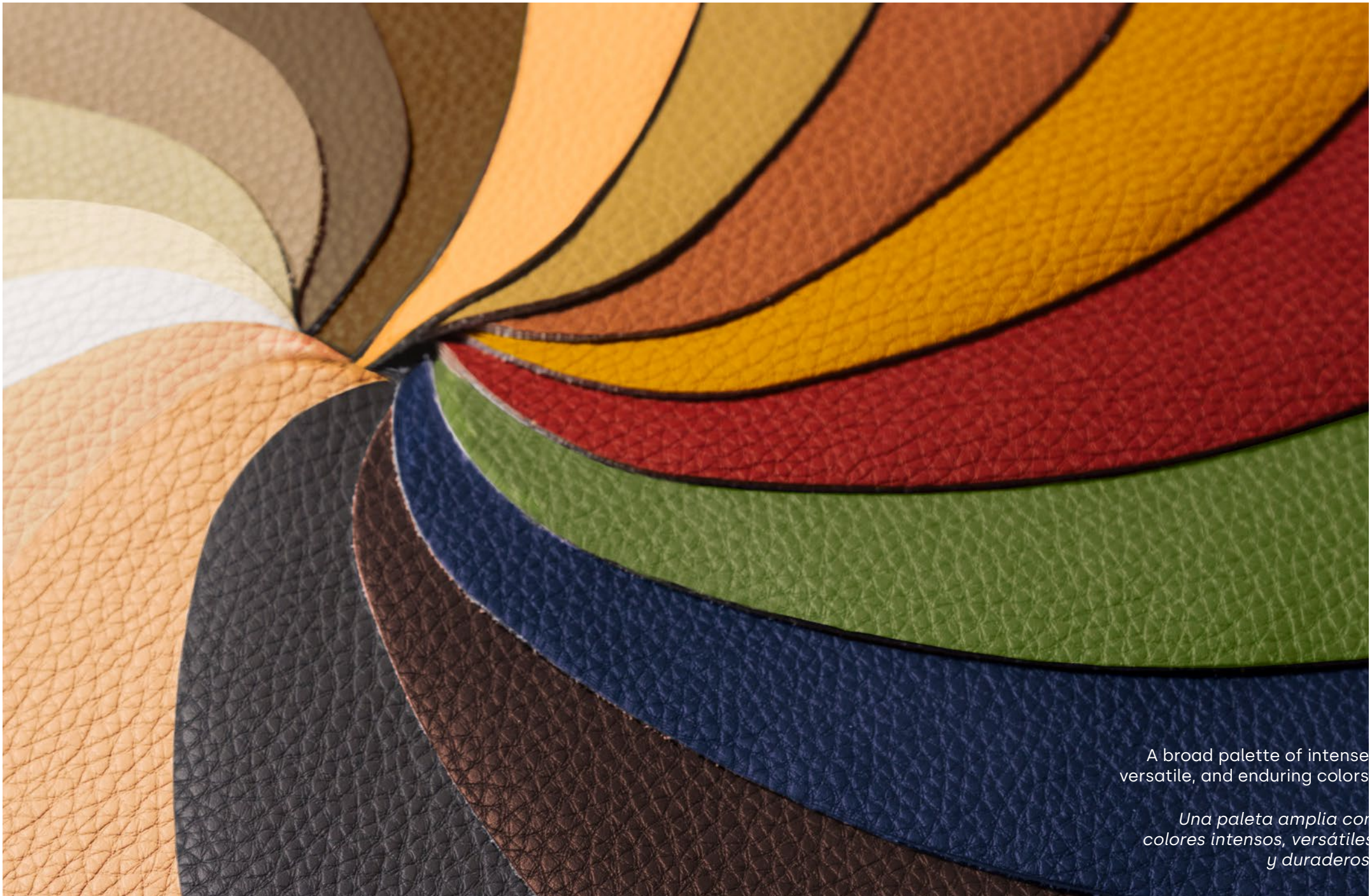


Pier Aqua  
**20909**



Charm Sky  
**20926**





A broad palette of intense  
versatile, and enduring colors

*Una paleta amplia con  
colores intensos, versátiles  
y duraderos*

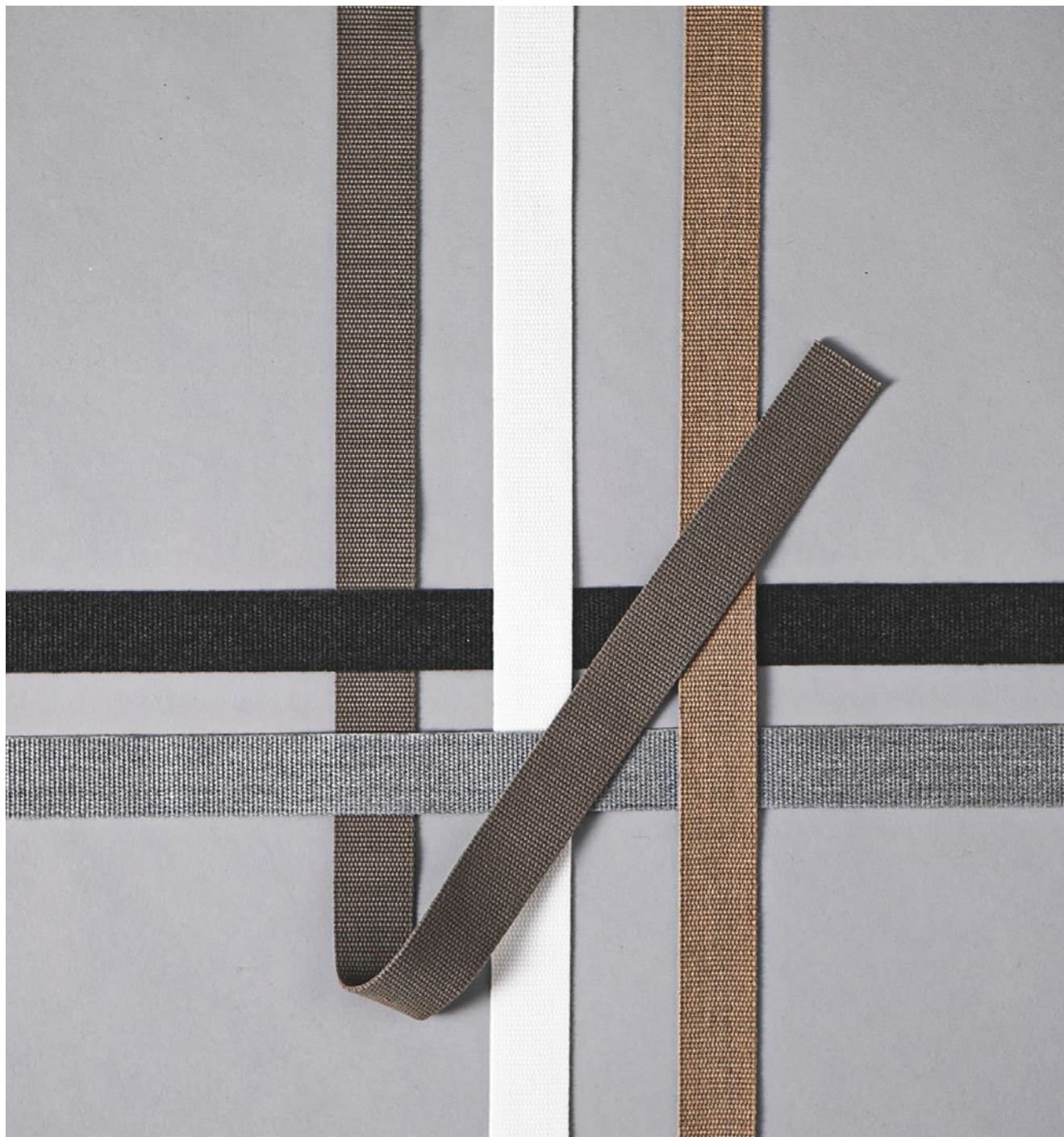
# *Strength woven in.*

Resilient and functional belts and ropes for furniture applications, designed to last.

*Cintas y cuerdas resistentes y funcionales para aplicaciones en mobiliario, diseñadas para durar.*



Belt Piedra  
**F105/20**





Rope Mineral  
**F506/18**



Rope Special Mineral  
**F606/18**



Belt Panama Grafito  
**F207/40**



Belt Integral  
**F103/20**



Belt Panama Integral  
**F203/40**



*Agora® PRO,  
When design demands more.*

*Where performance meets* nautic  
contract  
parasol  
webbings

**(agora)**<sup>®</sup> PRO

[www.agorafabrics.com](http://www.agorafabrics.com)