



BITEX

CONTRACT

411

BASICPAC FR



BITEX



CONTRACT

411



CONFORT
TÉRMICO



ACÚSTICO
ACUSTIC



UNE-EN 13773:2003
CLASS1



ANTIMANCHAS
STAIN RESISTANT

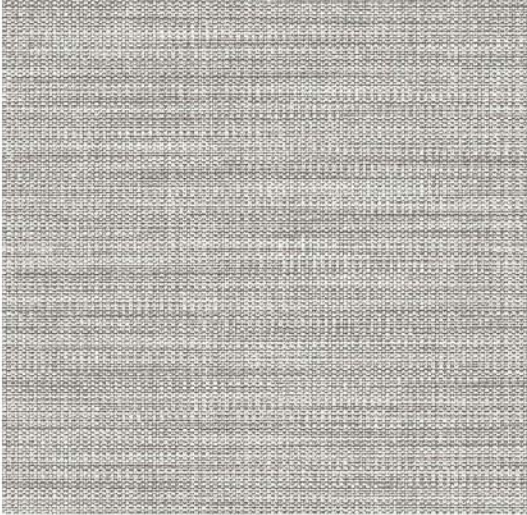


CORTINA
CURTAIN



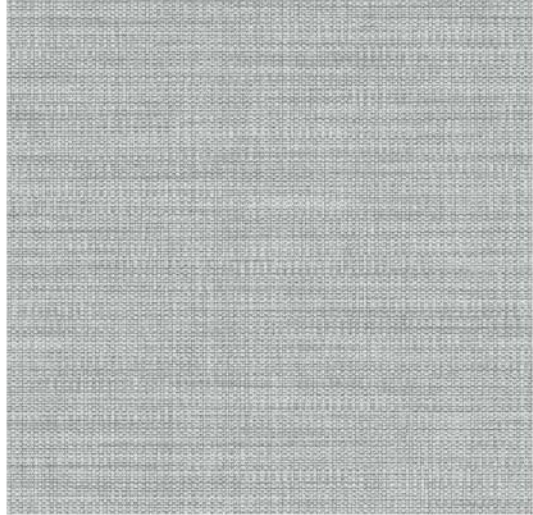
BASICPAC FR C/801 ▼

Ligth Grey



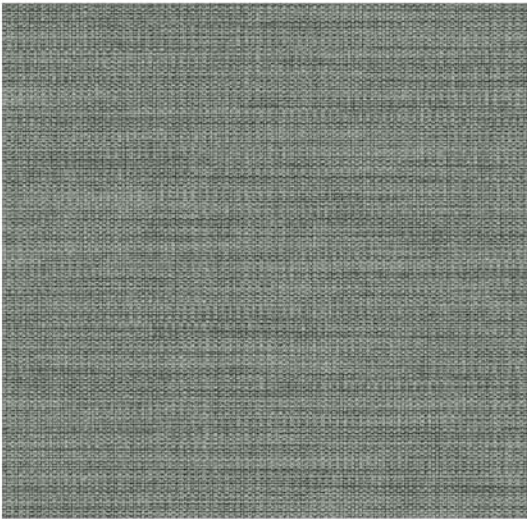
BASICPAC FR C/814 ▼

Iceberg Grey



BASICPAC FR C/834 ▼

Moon Grey



BASICPAC FR C/802 ▼

Alfalfa Taupe



BASICPAC FR C/812 ▼

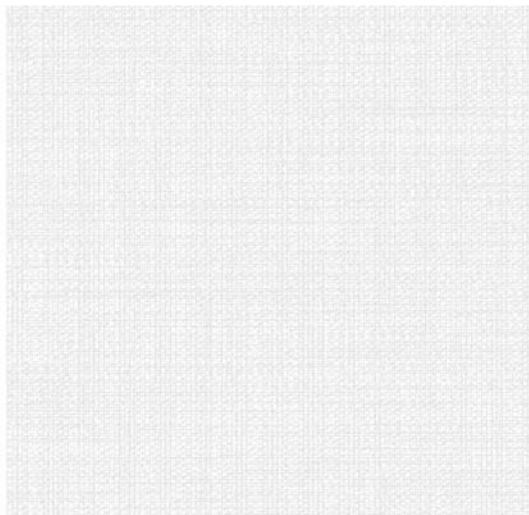
Agate Grey





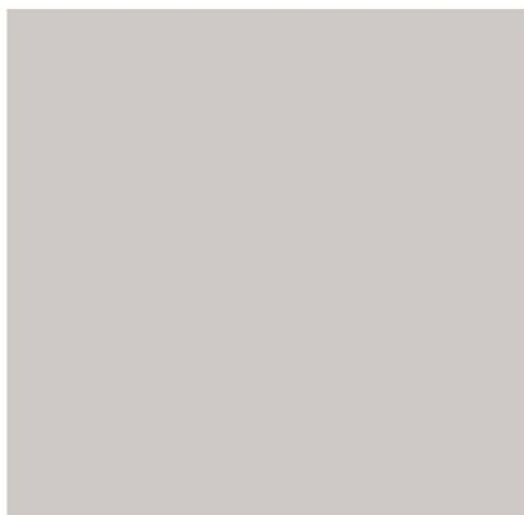
BASICPAC FR C/900 ▼

White



BASICPAC FR C/913 ▼

Alfa Grey



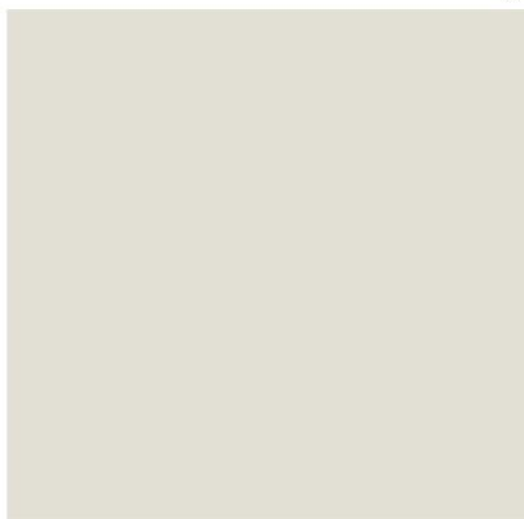
BASICPAC FR C/923 ▼

Laurel Taupe



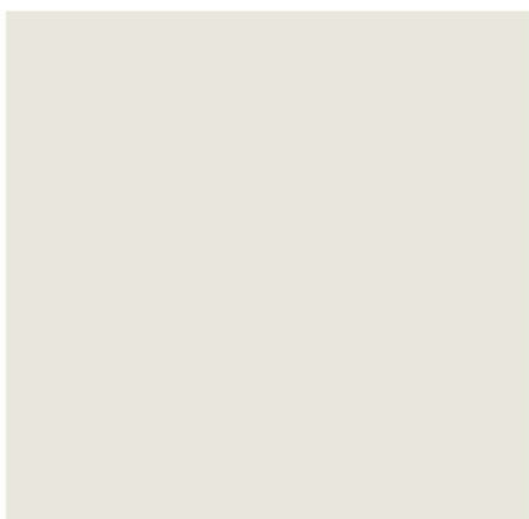
BASICPAC FR C/912 ▼

Gravel Beige








BASICPAC FR C/922 ▼

Smoke Grey



Características técnicas

Technical specifications

| Referencia Reference | Composición Composition | Ancho Width |
|--------------------------------------------|--------------------------------------------------------------------------------------------------------------------------------------------------------------------------------------------------------------------------------------------------------------------------------------------------------------------------------------------------------------------------------------------------------------------------------------|-------------------------------------------------------------------------------------------------------------------------------------------------------------------------------|
| BASICPAC FR | 100% PES FR | 300 cm |
| Ensayos Test | Normativa Normative | Resultados Results |
| Peso (gr/m2) Gramage | UNE-EN 12127:1998; pto 8.3 | 350 gr/m² +/- 3% COLOR: 801 814 834 923 802 812 390gr/m² +/- 3% COLOR: 900 913 912 922 |
| Pilling | | 4-5 |
| Solidez a la luz Light solidity | | 5 |
| Condiciones de lavado Washing conditions |      | |

TEJIDO OPACANTE

El grado de opacidad es de 100% según norma nf g 07-162.

*Para condiciones de uso normales. Si va a estar instalado en una zona de alta exposición al sol y con cristales sin filtro anti UV la solidez puede bajar a 3-4.

Encogimiento urdimbre y trama +-1%.

BLACKOUT FABRIC

The degree of opaqueness is 100% according to norm nf g 07-162.

*Under normal conditions of use. If it is going to be installed on a high sun exposure area and with no UV treated glasses, color fastness to light could decrease to 3-4.

Shrinkgaga warp and weft +-1%.



CONFORT TÉRMICO
THERMAL COMFORT



ACÚSTICO
ACUSTIC



UNE-EN 13773:2003
CLASS1



ANTIMANCHAS
STAIN RESISTANT



CORTINA
CURTAIN



Biar, Alicante, Spain
www.industrias-bitex.com

Para más información consultar tarifas
For more information check price list